

3501

Instrument 6890

C:\HPCHEM\2\DATA\2023\
35010000.D

Fennel Sweet Org

HP-5 5% Phenyl Methyl Siloxane

3501-BBBN

30.000m

Hungary

250.000um

Foeniculum dulce

0.250um

Sample/Solvent: 0.09g/0.55g

Injection Amount: 0.2uL

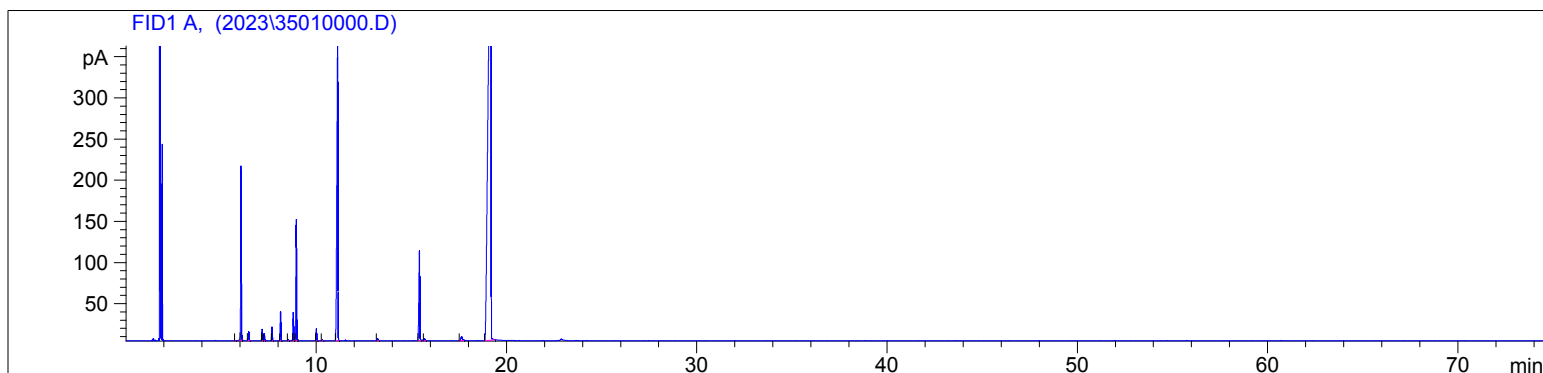
15:1 Split Ratio

2/22/2023 12:48:51 PM

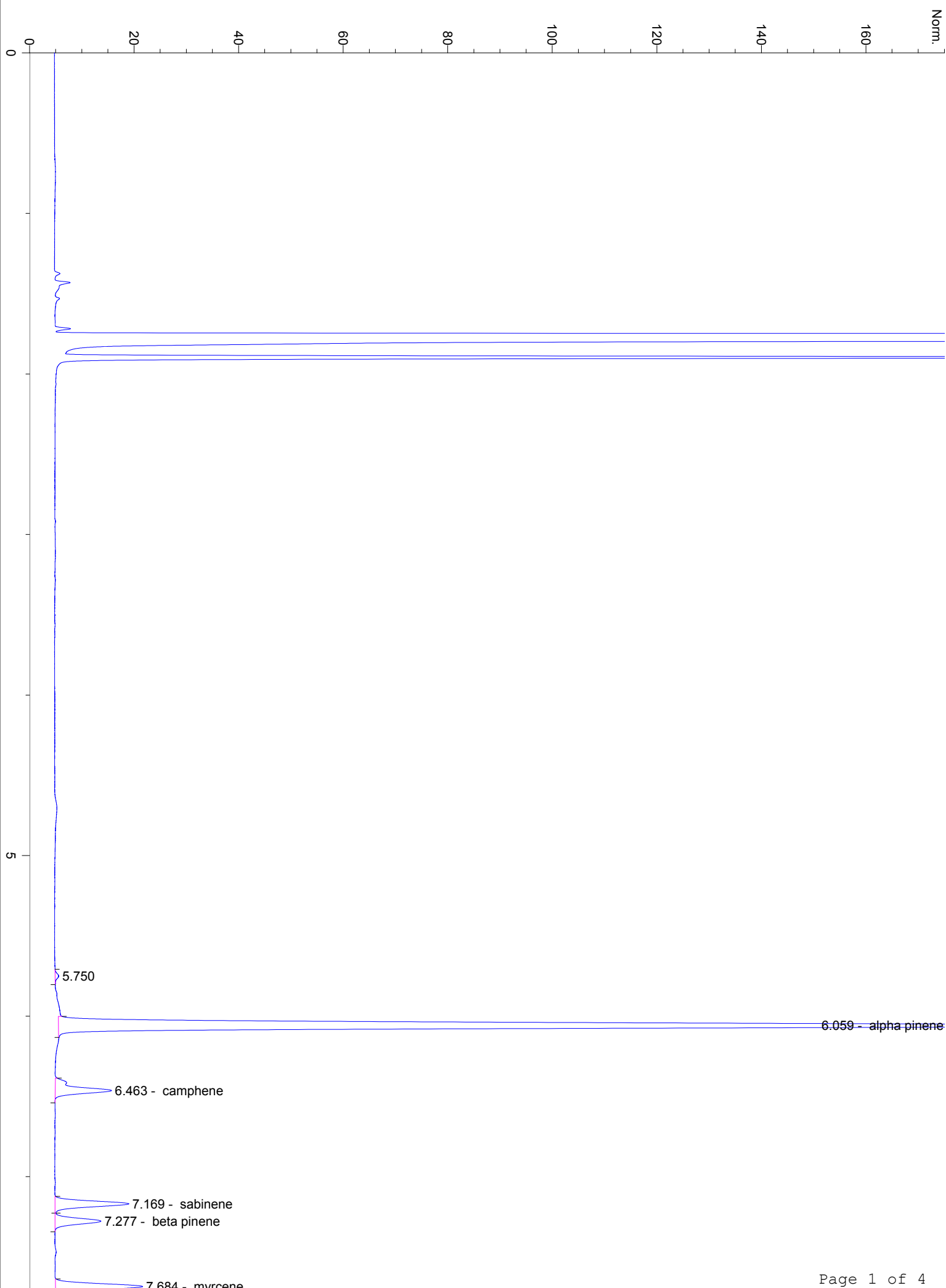
2/23/2023

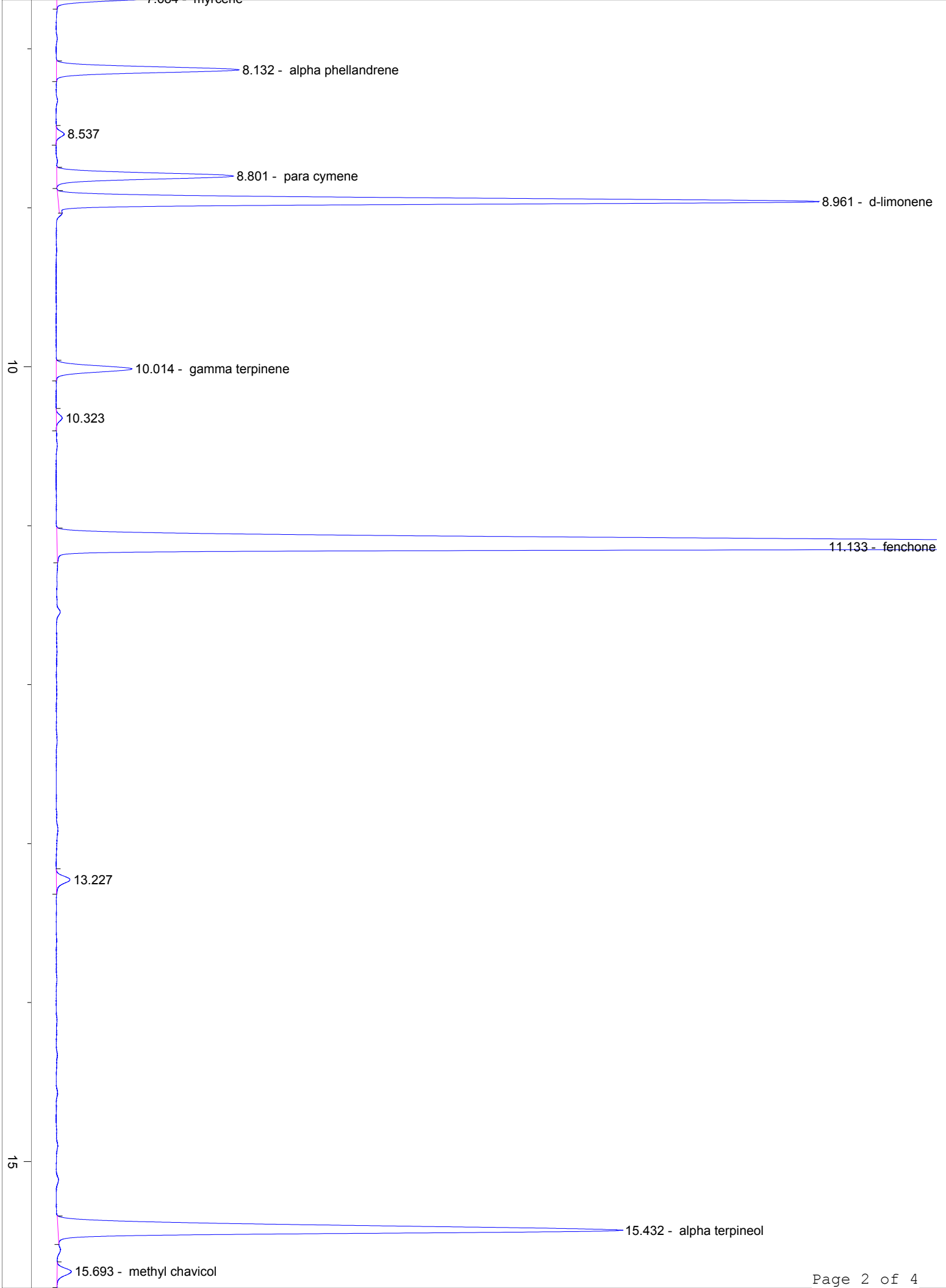
2/22/2023 12:48:51 PM

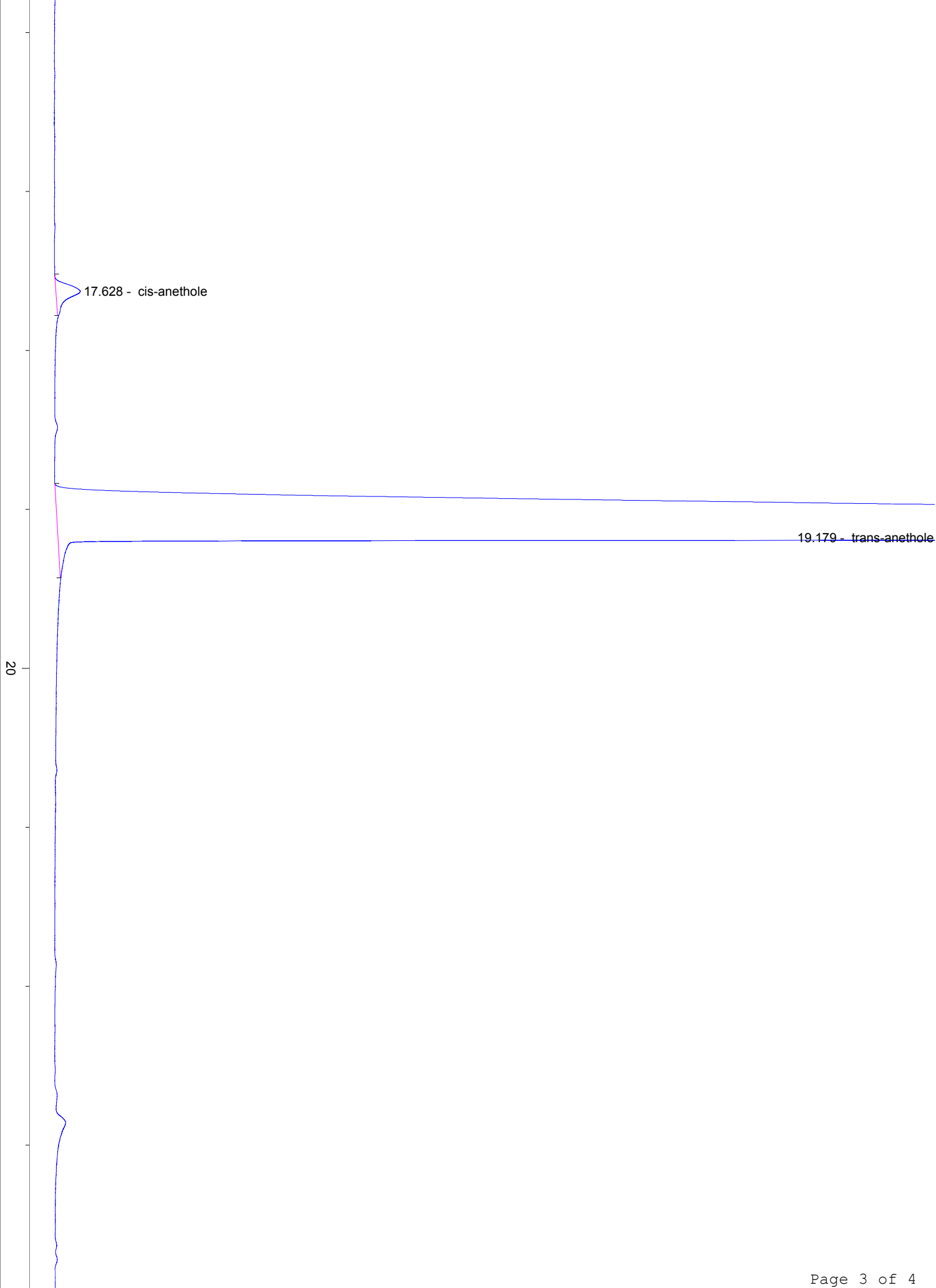
1:19:27 PM



#	Compound Name	Meas. Ret.	Amount	Response	Height	Area	Area %
1		5.75	0.00	1.51	0.68	1.51	0.02
2	alpha pinene	6.06	0.00	476.52	211.47	476.52	5.25
3	camphene	6.46	0.00	29.93	10.77	29.93	0.33
4	sabinene	7.17	0.00	34.06	14.13	34.06	0.37
5	beta pinene	7.28	0.00	21.95	8.80	21.95	0.24
6	myrcene	7.68	0.00	40.24	16.69	40.24	0.44
7	alpha phellandrene	8.13	0.00	90.72	35.23	90.72	1.00
8		8.54	0.00	3.97	1.54	3.97	0.04
9	para cymene	8.80	0.00	92.87	34.08	92.87	1.02
10	d-limonene	8.96	0.00	387.87	146.93	387.87	4.27
11	gamma terpinene	10.01	0.00	40.53	14.56	40.53	0.45
12		10.32	0.00	3.23	1.11	3.23	0.04
13	fenchone	11.13	0.00	1367.21	363.20	1367.21	15.05
14		13.23	0.00	8.84	2.64	8.84	0.10
15	alpha terpineol	15.43	0.00	362.62	108.90	362.62	3.99
16	methyl chavicol	15.69	0.00	9.01	2.73	9.01	0.10
17	cis-anethole	17.63	0.00	28.27	4.70	28.27	0.31
18	trans-anethole	19.18	0.00	6084.06	648.39	6084.06	66.98







20

19.179 - trans-anethole

17.628 - cis-anethole

25

30

min