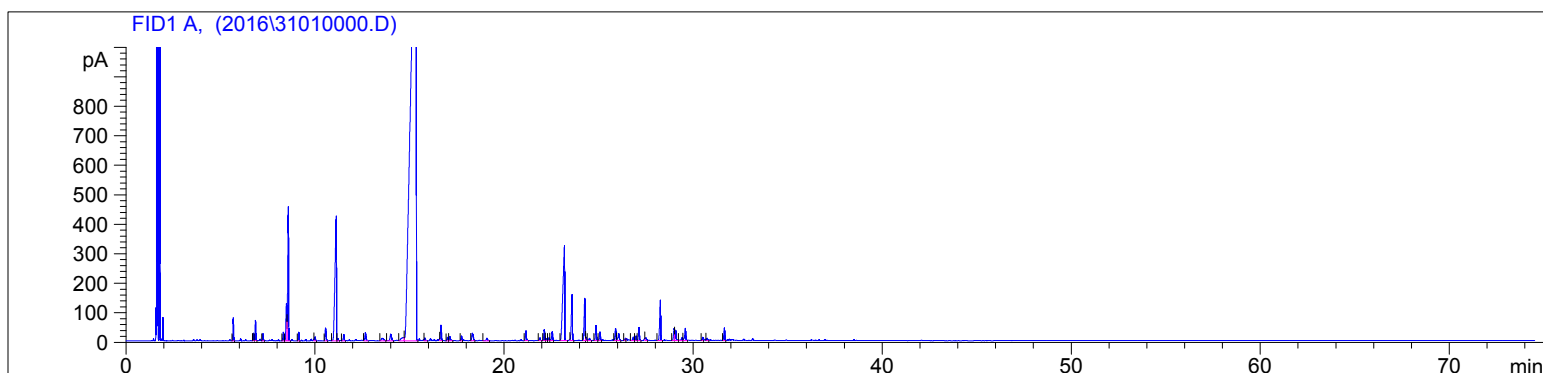


3101-032116

Instrument 6890

C:\HPCHEM\2\DATA\2016\  
31010000.DBasil, Tropical (Organic)  
3101-032116  
Egypt  
ocimum basilicum  
200uL Sample (0.26g)  
200uL Hexane (0.13g)HP-5 5% Phenyl Methyl Siloxane  
30.000m  
250.000um  
0.250um3/22/2016 12:45:00 PM  
3/22/2016 12:45:00 PM7/24/2017  
3:21:15 PM

#	Compound Name	Meas. Ret.	Amount	Response	Height	Area	Area %
1	alpha pinene	5.67	100.00	164.45	77.77	164.45	0.38
2	sabinene	6.74	100.00	56.78	24.98	56.78	0.13
3	beta pinene	6.84	100.00	166.43	68.76	166.43	0.39
4	myrcene	7.24	100.00	57.07	23.24	57.07	0.13
5	para cymene	8.31	100.00	79.88	28.60	79.88	0.19
6	limonene	8.48	100.00	434.62	125.11	434.62	1.01
7	1.8 cineol	8.58	100.00	1378.51	454.32	1378.51	3.21
8	cis-beta ocimene	0.00	0.00	0.00	0.00	0.00	0.00
9	trans beta ocimene	9.13	100.00	73.45	29.18	73.45	0.17
10	gamma terpinene	9.99	100.00	39.64	12.81	39.64	0.09
11	terpinolene	10.55	100.00	154.34	42.70	154.34	0.36
12	linalool	11.12	100.00	2255.01	423.03	2255.01	5.25
13		11.20	100.00	19.99	7.55	19.99	0.05
14		11.51	100.00	64.70	20.47	64.70	0.15
15	camphor	12.66	100.00	103.29	27.25	103.29	0.24
16	citronellal	0.00	0.00	0.00	0.00	0.00	0.00
17	borneol	13.53	100.00	68.83	8.02	68.83	0.16
18	terpin-4-ol	14.00	100.00	121.37	21.91	121.37	0.28
19	alpha terpineol	14.67	100.00	121.48	10.56	121.48	0.28
20	methyl chavicol	15.35	100.00	31285.60	1795.66	31285.60	72.90
21		15.81	100.00	28.95	8.73	28.95	0.07
22	citronellol	16.66	100.00	165.53	52.34	165.53	0.39
23		17.00	100.00	40.42	11.77	40.42	0.09
24	neral	17.12	100.00	53.65	13.89	53.65	0.13
25	chavicol	17.74	100.00	50.02	15.66	50.02	0.12
26	geranial	18.31	100.00	132.25	24.94	132.25	0.31
27		19.09	100.00	41.05	8.66	41.05	0.10
28	eugenol	21.15	100.00	115.28	33.19	115.28	0.27
29	alpha ylangene	21.88	100.00	31.45	9.64	31.45	0.07
30	alpha copaene	22.12	100.00	125.07	36.93	125.07	0.29
31		22.23	100.00	28.56	7.27	28.56	0.07
32		22.36	100.00	31.57	9.47	31.57	0.07
33	geranyl acetate	22.54	100.00	116.64	30.01	116.64	0.27
34	beta elemene	23.18	100.00	2033.23	321.09	2033.23	4.74
35	beta caryophyllene	23.58	100.00	588.62	155.66	588.62	1.37
36	trans caryophyllene	24.26	100.00	518.14	143.67	518.14	1.21
37		24.33	100.00	24.86	9.22	24.86	0.06
38		24.51	100.00	31.46	8.05	31.46	0.07
39	alpha humulene	24.85	100.00	178.44	50.77	178.44	0.42
40	trans beta farnesene	25.07	100.00	104.89	29.12	104.89	0.24

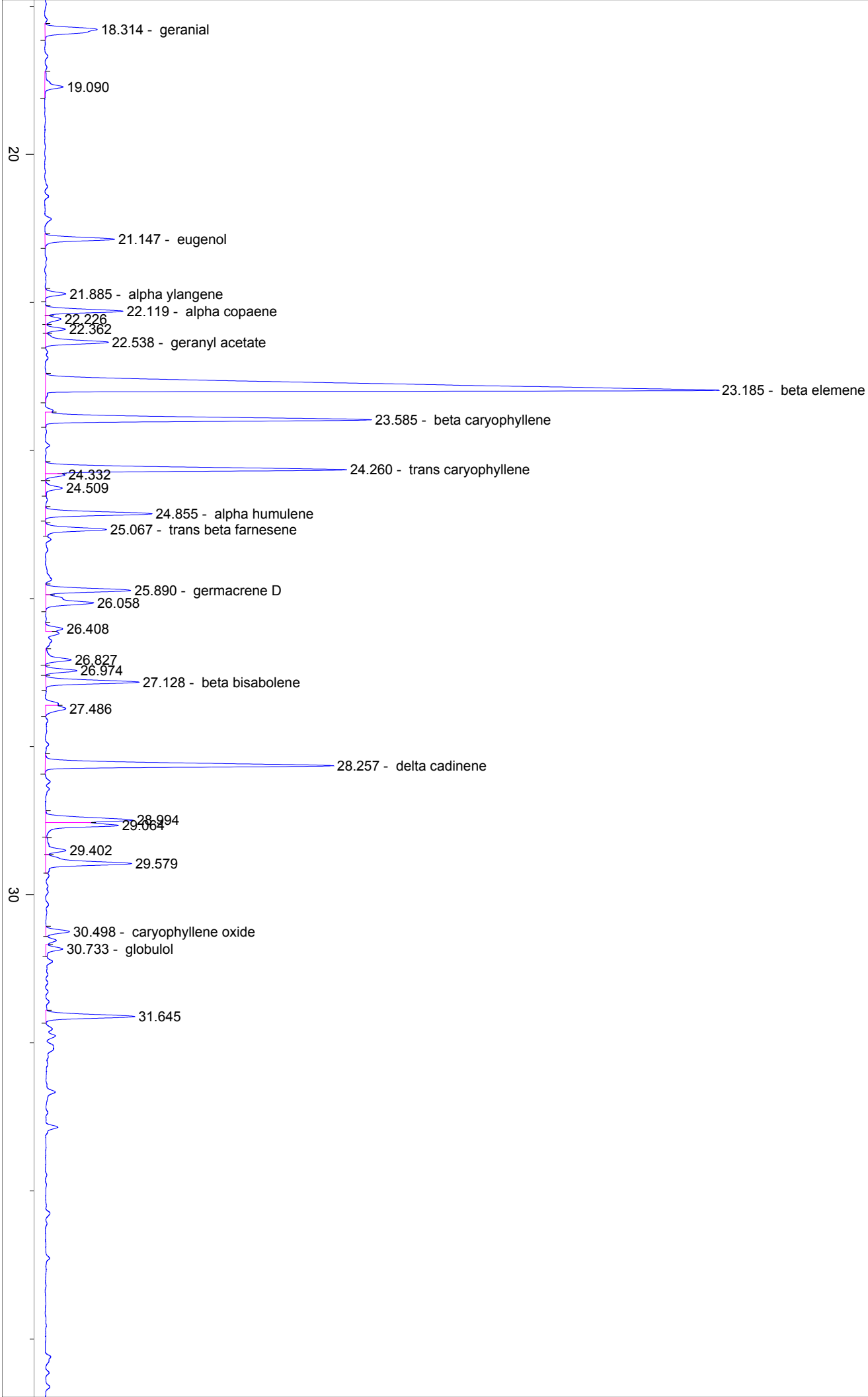
3101-032116

Instrument 6890

C:\HPCHEM\2\DATA\2016\  
31010000.DBasil, Tropical (Organic)  
3101-032116  
Egypt  
ocimum basilicum  
200uL Sample (0.26g)  
200uL Hexane (0.13g)HP-5 5% Phenyl Methyl Siloxane  
30.000m  
250.000um  
0.250um3/22/2016 12:45:00 PM  
3/22/2016 12:45:00 PM7/24/2017  
3:21:15 PM

#	Compound Name	Meas. Ret.	Amount	Response	Height	Area	Area %
41	germacrene D	25.89	100.00	145.30	40.53	145.30	0.34
42		26.06	100.00	108.82	22.76	108.82	0.25
43		26.41	100.00	28.81	8.15	28.81	0.07
44		26.83	100.00	49.39	12.26	49.39	0.12
45		26.97	100.00	47.89	14.89	47.89	0.11
46	beta bisabolene	27.13	100.00	155.44	44.47	155.44	0.36
47		27.49	100.00	45.22	9.63	45.22	0.11
48	delta cadinene	28.26	100.00	505.69	137.51	505.69	1.18
49		28.99	100.00	162.94	41.82	162.94	0.38
50		29.06	100.00	128.29	34.72	128.29	0.30
51		29.40	100.00	45.00	9.71	45.00	0.10
52		29.58	100.00	178.51	41.04	178.51	0.42
53	caryophyllene oxide	30.50	100.00	41.47	11.32	41.47	0.10
54	globulol	30.73	100.00	32.24	8.11	32.24	0.08
55		31.64	100.00	154.56	42.33	154.56	0.36





40

50

60

70

min