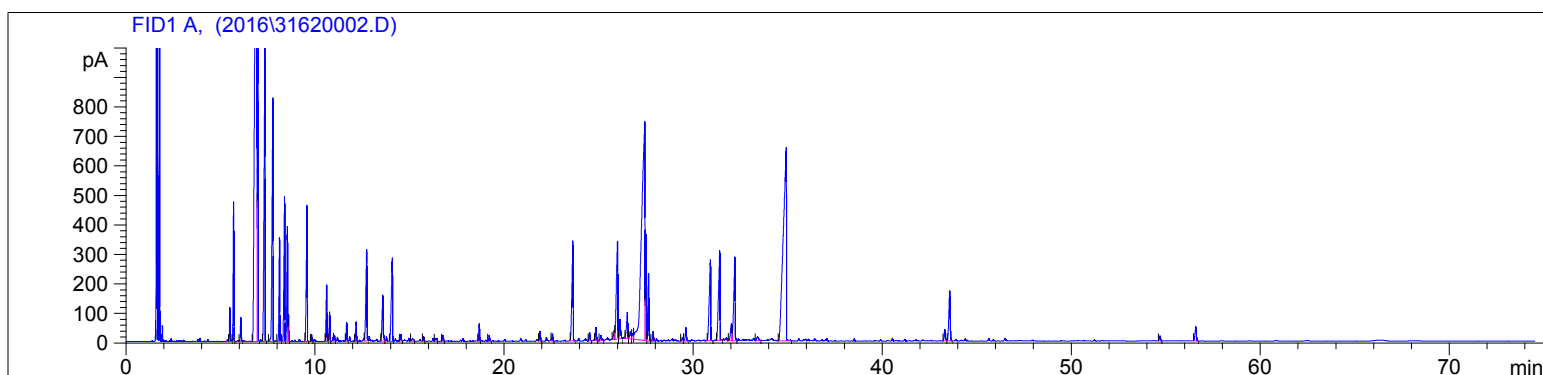


3162-080216

Instrument 6890

C:\HPCHEM\2\DATA\2016\
31620002.DChamomile, Blue
3162-080216
Morocco
tanacetum annuum
Sample: 0.22g
Hexane: 0.09g
Injection: 0.2uLHP-5 5% Phenyl Methyl Siloxane
30.000m
250.000um
0.250um8/5/2016 2:26:37 PM
8/5/2016 2:26:37 PM8/15/2016
5:07:58 PM

#	Compound Name	Meas. Ret.	Amount	Response	Height	Area	Area %
1	alpha thujene	5.49	290.37	289.18	115.57	289.18	0.43
2	alpha pinene	5.69	59.49	1168.46	462.30	1168.46	1.75
3	camphene	6.07	487.52	219.95	79.96	219.95	0.33
4	sabinene	6.91	307.43	15768.95	2331.30	15768.95	23.63
5	beta pinene	6.97	1828.34	2327.08	1057.64	2327.08	3.49
6	myrcene	7.34	405.09	3711.54	1001.51	3711.54	5.56
7	alpha phellandrene	7.76	305.57	2987.17	823.20	2987.17	4.48
8	alpha terpinene	8.11	217.06	961.19	342.03	961.19	1.44
9	para cymene	8.38	299.12	1544.91	494.67	1544.91	2.32
10	d-limonene	8.53	13.95	1205.05	385.62	1205.05	1.81
11	1.8 cineol	8.59	321.56	185.85	90.59	185.85	0.28
12	gamma terpinene	9.57	1494.79	1587.31	458.90	1587.31	2.38
13		10.60	0.00	562.58	189.41	562.58	0.84
14		10.76	0.00	278.02	98.80	278.02	0.42
15	linalool	11.02	134.05	67.80	20.18	67.80	0.10
16		11.66	0.00	184.10	62.43	184.10	0.28
17		12.17	0.00	201.04	65.31	201.04	0.30
18	camphor	12.72	1352.54	1288.55	306.17	1288.55	1.93
19	borneol	13.58	2115.59	673.72	155.42	673.72	1.01
20	terpin-4-ol	14.08	115.88	1273.59	276.28	1273.59	1.91
21		14.53	0.00	69.57	22.16	69.57	0.10
22		15.14	0.00	54.84	9.38	54.84	0.08
23		15.74	0.00	52.36	15.45	52.36	0.08
24	pulegone	16.37	12.57	64.25	10.45	64.25	0.10
25		16.76	0.00	69.93	19.95	69.93	0.10
26	thymol	18.68	43.53	181.97	57.74	181.97	0.27
27		19.21	0.00	63.18	19.56	63.18	0.09
28		21.90	0.00	104.89	31.84	104.89	0.16
29		22.55	0.00	82.06	23.30	82.06	0.12
30	methyl eugenol	23.63	0.00	1549.70	336.11	1549.70	2.32
31	beta caryophyllene	24.52	0.61	89.35	26.99	89.35	0.13
32		24.86	0.00	152.64	44.55	152.64	0.23
33	cis-beta-farnesene	25.11	1.67	92.18	17.72	92.18	0.14
34		25.82	0.00	134.62	30.78	134.62	0.20
35	cis, trans-farnesene	25.99	590.02	1708.01	329.17	1708.01	2.56
36		26.13	0.00	266.67	65.09	266.67	0.40

3162-080216

Instrument 6890

C:\HPCHEM\2\DATA\2016\
31620002.DChamomile, Blue
3162-080216
Morocco
tanacetum annum
Sample: 0.22g
Hexane: 0.09g
Injection: 0.2uLHP-5 5% Phenyl Methyl Siloxane
30.000m
250.000um
0.250um8/5/2016 2:26:37 PM
8/5/2016 2:26:37 PM8/15/2016
5:07:58 PM

#	Compound Name	Meas. Ret.	Amount	Response	Height	Area	Area %
37	germacrene D	26.51	169.08	398.71	88.20	398.71	0.60
38		26.67	0.00	130.30	23.22	130.30	0.20
39		26.80	0.00	98.07	19.27	98.07	0.15
40	dihydrochamazulene isomer	27.43	0.00	8887.30	742.55	8887.30	13.32
41	alpha selinene	27.51	0.00	1092.24	356.58	1092.24	1.64
42	bicyclogermacrene	27.63	376.47	827.91	226.04	827.91	1.24
43		27.88	0.00	104.74	32.36	104.74	0.16
44		29.43	0.00	54.07	12.52	54.07	0.08
45	beta bisabolene	29.61	136.14	183.44	44.51	183.44	0.27
46	carryophyllene oxide	30.90	0.00	1454.23	269.80	1454.23	2.18
47		31.40	0.00	1623.58	298.75	1623.58	2.43
48	beta bisabolol oxide	32.02	384.62	314.41	57.70	314.41	0.47
49	alpha bisabolol oxide B	32.20	93.02	1423.31	281.53	1423.31	2.13
50	alpha bisabolol	0.00	0.00	0.00	0.00	0.00	0.00
51	beta eudesmol	33.40	0.00	93.48	12.03	93.48	0.14
52	chamazulene	34.91	1135.77	7463.11	658.23	7463.11	11.19
53	alpha bisabolol oxide A	0.00	0.00	0.00	0.00	0.00	0.00
54		43.30	0.00	159.77	37.58	159.77	0.24
55		43.56	0.00	838.93	168.59	838.93	1.26
56		54.69	0.00	63.72	16.36	63.72	0.10
57		56.58	0.00	226.88	47.72	226.88	0.34

