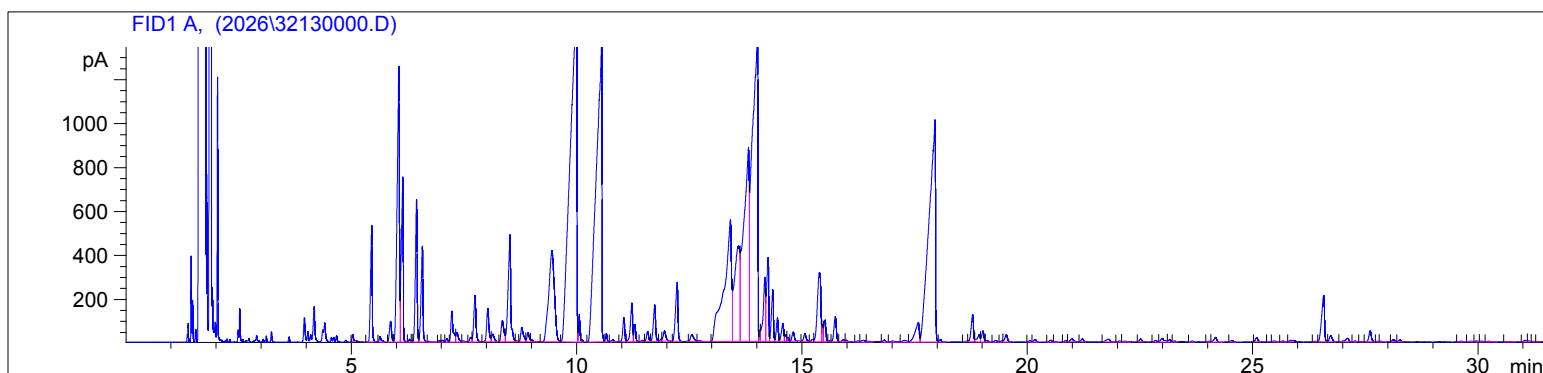


Roman Chamomile Conv.  
3213 DZHD  
Anthemis Nobilis  
USA  
Sample/Solvent: 0.05g /0.5g  
Injection Amount: 0.2uL

HP-5 5% Phenyl Methyl Siloxane  
30.000m  
250.000um  
0.250um

4/23/2026 10:03:45 AM  
4/23/2026 10:03:45 AM

4/23/2026  
11:23:28 AM



#	Compound Name	Meas. Ret.	Amount	Response	Height	Area	Area %
1		5.03	0.00	68.55	32.09	68.55	0.07
2		5.46	0.00	1348.87	529.31	1348.87	1.31
3		5.64	0.00	79.95	25.26	79.95	0.08
4	Alpha Thujene	5.88	0.00	310.34	94.37	310.34	0.30
5	Isobutyl n-butyrate	6.06	0.00	4275.12	1252.39	4275.12	4.17
6	Alpha Pinene	6.15	0.00	2287.89	750.62	2287.89	2.23
7		6.30	0.00	35.77	13.22	35.77	0.03
8		6.35	0.00	8.12	4.60	8.12	0.01
9	Camphene	6.45	0.00	1765.97	648.81	1765.97	1.72
10	(E)-2-Butenoic Acid 2-Methy	6.58	0.00	1282.66	436.73	1282.66	1.25
11		6.72	0.00	17.71	3.88	17.71	0.02
12		6.96	0.00	16.06	6.43	16.06	0.02
13		7.03	0.00	26.51	8.68	26.51	0.03
14		7.12	0.00	43.00	15.64	43.00	0.04
15	Beta Pinene	7.23	0.00	482.53	140.90	482.53	0.47
16	Sabinene	7.35	0.00	166.71	43.36	166.71	0.16
17	Myrcene	7.49	0.00	22.03	5.26	22.03	0.02
18	Alpha Phellandrene	7.65	0.00	63.69	21.75	63.69	0.06
19	Para Cymene	7.75	0.00	716.17	212.08	716.17	0.70
20	Delta 3 Carene	8.03	0.00	534.14	152.54	534.14	0.52
21		8.14	0.00	146.92	35.53	146.92	0.14
22	Isoamyle Isobutyrate	8.36	0.00	408.93	97.14	408.93	0.40
23	Isobutyric Acid 3-Methylbut	8.52	0.00	1985.66	486.63	1985.66	1.93
24	Cis Beta Ocimene	8.66	0.00	17.92	5.45	17.92	0.02
25	d-Limonene	8.78	0.00	274.36	66.34	274.36	0.27
26	1.8 Cineol	8.92	0.00	146.86	42.03	146.86	0.14
27	Trans-Beta Ocimene	9.00	0.00	23.52	8.74	23.52	0.02
28	Gamma Terpinene	9.45	0.00	3650.39	415.54	3650.39	3.56
29	Isobutyl Angelate + Isoamyl	10.00	0.00	15857.55	1588.17	15857.55	15.45
30		10.06	0.00	261.36	125.93	261.36	0.25
31		10.12	0.00	22.46	9.88	22.46	0.02
32	Methyl Allyl Angelate	10.55	0.00	11977.68	1348.02	11977.68	11.67
33	Alpha Terpinolene	10.66	0.00	88.70	38.88	88.70	0.09
34		10.80	0.00	40.04	10.19	40.04	0.04
35	Linalool	11.05	0.00	328.45	109.00	328.45	0.32
36	Trans Sabinene Hydrate	11.22	0.00	594.68	175.79	594.68	0.58
37		11.29	0.00	197.84	78.60	197.84	0.19
38		11.45	0.00	23.95	6.57	23.95	0.02
39		11.57	0.00	152.90	46.09	152.90	0.15
40	3-Mehtyl-Butanoic Acid 2-me	11.73	0.00	567.68	167.46	567.68	0.55

3213 DZHD

Instrument 6890

C:\HPCHEM\2\DATA\2026\  
32130000.D

Roman Chamomile Conv.

HP-5 5% Phenyl Methyl Siloxane

3213 DZHD

30.000m

Anthemis Nobilis

250.000um

USA

0.250um

Sample/Solvent: 0.05g /0.5g

Injection Amount: 0.2uL

4/23/2026 10:03:45 AM

4/23/2026

4/23/2026 10:03:45 AM

11:23:28 AM

#	Compound Name	Meas. Ret.	Amount	Response	Height	Area	Area %
41		11.87	0.00	27.05	11.20	27.05	0.03
42		11.94	0.00	194.02	46.39	194.02	0.19
43		12.23	0.00	998.58	268.18	998.58	0.97
44		12.55	0.00	154.19	30.99	154.19	0.15
45		12.72	0.00	13.24	4.14	13.24	0.01
46	Trans Pinocarveol	13.41	0.00	6359.99	553.24	6359.99	6.20
47	2-Methyl-butyl Angelate	13.59	0.00	3620.75	434.19	3620.75	3.53
48	Isoamyl Angelate	13.81	0.00	7719.79	882.15	7719.79	7.52
49	Pinocarpone	14.01	0.00	11955.89	1384.61	11955.89	11.65
50	Borneol	14.06	0.00	91.98	51.64	91.98	0.09
51	Terpin 4-ol	14.17	0.00	1093.83	291.80	1093.83	1.07
52		14.25	0.00	1231.69	381.36	1231.69	1.20
53		14.35	0.00	731.94	236.11	731.94	0.71
54		14.45	0.00	298.44	107.11	298.44	0.29
55	Alpha Terpineol	14.57	0.00	289.89	81.83	289.89	0.28
56		14.63	0.00	84.64	32.63	84.64	0.08
57		14.69	0.00	44.43	18.69	44.43	0.04
58	Citronellol	14.80	0.00	150.01	42.80	150.01	0.15
59		15.06	0.00	137.82	35.64	137.82	0.13
60		15.23	0.00	35.13	10.00	35.13	0.03
61	Myrtenol	15.38	0.00	1680.78	315.15	1680.78	1.64
62		15.45	0.00	151.47	77.15	151.47	0.15
63		15.51	0.00	302.98	99.40	302.98	0.30
64		15.60	0.00	12.89	4.37	12.89	0.01
65		15.74	0.00	416.27	116.04	416.27	0.41
66		15.91	0.00	44.20	10.58	44.20	0.04
67		15.98	0.00	29.65	7.47	29.65	0.03
68		16.24	0.00	21.72	5.86	21.72	0.02
69		16.35	0.00	45.77	8.17	45.77	0.04
70		16.46	0.00	22.86	4.15	22.86	0.02
71		16.82	0.00	41.93	9.25	41.93	0.04
72		17.01	0.00	44.52	4.95	44.52	0.04
73		17.26	0.00	51.87	7.61	51.87	0.05
74		17.58	0.00	564.32	88.73	564.32	0.55
75	3-Methyl Angelate	17.95	0.00	10019.81	1010.50	10019.81	9.76
76		18.07	0.00	37.64	12.23	37.64	0.04
77		18.64	0.00	14.34	3.73	14.34	0.01
78		18.78	0.00	447.96	124.29	447.96	0.44
79		18.93	0.00	149.24	32.85	149.24	0.15
80		19.01	0.00	173.90	50.11	173.90	0.17
81		19.10	0.00	21.52	6.52	21.52	0.02
82		19.30	0.00	27.84	7.47	27.84	0.03
83		19.44	0.00	19.13	6.36	19.13	0.02
84		19.53	0.00	133.65	33.02	133.65	0.13
85		20.05	0.00	19.59	6.06	19.59	0.02
86		20.17	0.00	41.52	12.13	41.52	0.04
87		20.51	0.00	32.79	8.66	32.79	0.03
88		20.62	0.00	6.96	2.15	6.96	0.01
89		20.84	0.00	23.89	6.72	23.89	0.02
90		20.99	0.00	74.81	14.03	74.81	0.07
91		21.21	0.00	48.89	13.86	48.89	0.05
92		21.80	0.00	78.08	12.77	78.08	0.08
93		22.04	0.00	18.46	5.00	18.46	0.02
94		22.16	0.00	25.52	4.34	25.52	0.02
95		22.51	0.00	49.61	13.62	49.61	0.05

3213 DZHD

Instrument 6890

C:\HPCHEM\2\DATA\2026\  
32130000.D

Roman Chamomile Conv.

HP-5 5% Phenyl Methyl Siloxane

3213 DZHD

30.000m

Anthemis Nobilis

250.000um

USA

0.250um

Sample/Solvent: 0.05g /0.5g

Injection Amount: 0.2uL

4/23/2026 10:03:45 AM

4/23/2026

4/23/2026 10:03:45 AM

11:23:28 AM

#	Compound Name	Meas. Ret.	Amount	Response	Height	Area	Area %
96		22.85	0.00	31.38	7.18	31.38	0.03
97	Beta Elemene	23.00	0.00	95.73	16.76	95.73	0.09
98		23.16	0.00	40.51	10.49	40.51	0.04
99		23.27	0.00	19.97	5.08	19.97	0.02
100		23.66	0.00	19.12	4.94	19.12	0.02
101		24.04	0.00	17.41	4.20	17.41	0.02
102	Beta Caryophyllene	24.18	0.00	96.51	20.99	96.51	0.09
103		24.54	0.00	28.42	7.33	28.42	0.03
104	Alpha Humulene	25.09	0.00	74.66	19.00	74.66	0.07
105		25.37	0.00	7.17	2.16	7.17	0.01
106		25.48	0.00	24.32	5.43	24.32	0.02
107		25.67	0.00	17.03	4.50	17.03	0.02
108		25.84	0.00	44.12	7.42	44.12	0.04
109		26.40	0.00	13.84	3.50	13.84	0.01
110	Germacrene D	26.58	0.00	933.43	211.31	933.43	0.91
111	Eugenyl Acetate	26.74	0.00	120.56	28.90	120.56	0.12
112		27.11	0.00	94.84	16.88	94.84	0.09
113		27.28	0.00	17.56	4.43	17.56	0.02
114		27.42	0.00	7.51	2.10	7.51	0.01
115	Germacrene A	27.61	0.00	193.68	50.55	193.68	0.19
116		27.77	0.00	11.62	3.24	11.62	0.01
117		27.85	0.00	10.13	3.45	10.13	0.01
118		28.12	0.00	39.01	10.93	39.01	0.04
119		28.27	0.00	34.63	9.21	34.63	0.03
120		29.62	0.00	21.24	3.24	21.24	0.02
121		29.84	0.00	17.91	3.83	17.91	0.02
122	Caryophyllene Oxide	29.97	0.00	20.00	5.14	20.00	0.02
123		30.08	0.00	18.91	4.09	18.91	0.02
124		30.24	0.00	17.28	3.62	17.28	0.02
125		30.71	0.00	13.91	2.18	13.91	0.01
126		31.05	0.00	30.47	7.09	30.47	0.03
127		31.13	0.00	19.02	4.95	19.02	0.02
128		31.22	0.00	9.49	2.69	9.49	0.01
129		31.33	0.00	7.37	1.88	7.37	0.01

