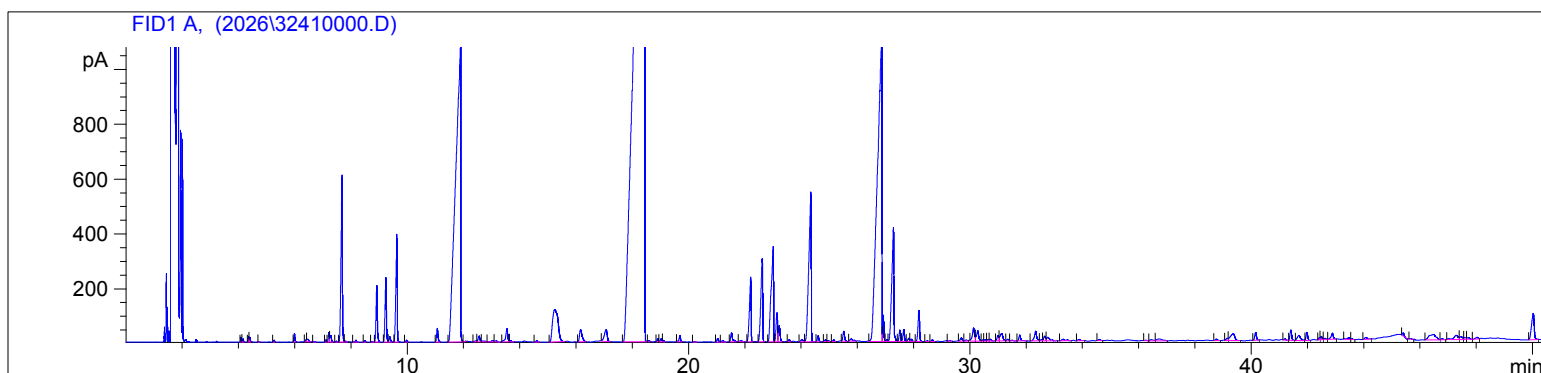


Clary Sage Org  
3241 ABID  
Salvia Sclarea  
France  
Sample/Solvent: 0.05g /0.5g  
Injection Amount: 0.2uL

HP-5 5% Phenyl Methyl Siloxane  
30.000m  
250.000um  
0.250um

4/16/2026 1:06:15 PM  
4/16/2026 1:06:15 PM

4/17/2026  
8:58:24 AM



#	Compound Name	Meas. Ret.	Amount	Response	Height	Area	Area %
1	Trans-Salvene	4.09	0.00	33.29	17.66	33.29	0.03
2		4.16	0.00	24.52	11.17	24.52	0.02
3		4.35	0.00	37.03	19.15	37.03	0.03
4		4.39	0.00	40.15	17.48	40.15	0.04
5		4.73	0.00	3.88	1.83	3.88	0.00
6		5.26	0.00	14.02	6.72	14.02	0.01
7	Alpha Pinene	5.98	0.00	67.66	30.39	67.66	0.06
8		6.40	0.00	21.56	8.62	21.56	0.02
9	Camphene	6.46	0.00	43.29	9.72	43.29	0.04
10		6.69	0.00	6.49	2.53	6.49	0.01
11		7.10	0.00	19.52	7.67	19.52	0.02
12	Beta Pinene	7.21	0.00	91.34	34.96	91.34	0.09
13		7.27	0.00	84.80	24.80	84.80	0.08
14		7.47	0.00	10.79	3.42	10.79	0.01
15	Myrcene	7.68	0.00	2069.03	607.29	2069.03	1.95
16		7.80	0.00	9.11	3.16	9.11	0.01
17	Alpha Phellandrene	8.17	0.00	24.19	7.04	24.19	0.02
18		8.48	0.00	16.81	4.85	16.81	0.02
19		8.74	0.00	7.49	2.42	7.49	0.01
20	d-Limonene	8.91	0.00	659.24	205.35	659.24	0.62
21	Cis Beta Ocimene	9.23	0.00	768.92	235.06	768.92	0.72
22		9.37	0.00	69.18	19.44	69.18	0.07
23	Trans Beta Ocimene	9.62	0.00	1307.62	391.33	1307.62	1.23
24		9.97	0.00	23.48	7.17	23.48	0.02
25	Terpinolene	11.06	0.00	170.49	49.50	170.49	0.16
26	Linalool	11.89	0.00	13430.89	1081.00	13430.89	12.63
27		12.07	0.00	3.05	1.42	3.05	0.00
28		12.43	0.00	16.77	3.77	16.77	0.02
29		12.55	0.00	90.51	20.71	90.51	0.09
30		12.68	0.00	20.81	3.21	20.81	0.02
31		13.02	0.00	33.81	5.57	33.81	0.03
32		13.14	0.00	21.71	4.40	21.71	0.02
33		13.54	0.00	245.67	48.37	245.67	0.23
34		13.66	0.00	9.32	4.24	9.32	0.01
35		14.59	0.00	19.58	4.00	19.58	0.02
36	Alpha Terpineol	15.25	0.00	1588.87	117.33	1588.87	1.49
37		16.15	0.00	290.86	45.07	290.86	0.27
38	Nerol	17.06	0.00	305.78	43.37	305.78	0.29
39	Linalyl Acetate	18.42	0.00	55454.11	2448.47	55454.11	52.17
40		18.59	0.00	15.89	5.56	15.89	0.01

3241 ABID

Instrument 6890

C:\HPCHEM\2\DATA\2026\  
32410000.DClary Sage Org  
3241 ABID  
Salvia Sclarea  
France  
Sample/Solvent: 0.05g /0.5g  
Injection Amount: 0.2uLHP-5 5% Phenyl Methyl Siloxane  
30.000m  
250.000um  
0.250um4/16/2026 1:06:15 PM  
4/16/2026 1:06:15 PM4/17/2026  
8:58:24 AM

#	Compound Name	Meas. Ret.	Amount	Response	Height	Area	Area %
41		18.90	0.00	34.29	12.15	34.29	0.03
42		19.02	0.00	45.49	11.79	45.49	0.04
43		19.10	0.00	17.21	5.83	17.21	0.02
44	Bornyl Acetate	19.69	0.00	85.60	23.80	85.60	0.08
45		20.20	0.00	8.03	1.98	8.03	0.01
46		21.03	0.00	45.51	12.17	45.51	0.04
47		21.21	0.00	21.34	4.64	21.34	0.02
48		21.52	0.00	156.76	33.36	156.76	0.15
49		21.85	0.00	21.56	4.40	21.56	0.02
50	Neryl Acetate	22.20	0.00	970.80	233.93	970.80	0.91
51	Geranyl Acetate	22.61	0.00	1381.97	302.18	1381.97	1.30
52	Alpha Copaene	23.00	0.00	2029.98	344.37	2029.98	1.91
53	Beta Cubebene	23.14	0.00	406.95	105.56	406.95	0.38
54	Beta Elemene	23.22	0.00	226.41	59.35	226.41	0.21
55		23.57	0.00	27.69	8.40	27.69	0.03
56		24.02	0.00	43.19	7.82	43.19	0.04
57	Beta Caryophyllene	24.34	0.00	3234.37	543.81	3234.37	3.04
58		24.60	0.00	78.42	21.71	78.42	0.07
59		24.86	0.00	26.94	7.18	26.94	0.03
60		24.96	0.00	13.58	3.83	13.58	0.01
61		25.15	0.00	21.29	5.57	21.29	0.02
62	Alpha Humulene	25.51	0.00	148.92	35.90	148.92	0.14
63		25.77	0.00	61.59	8.71	61.59	0.06
64	Germacrene D	26.86	0.00	12337.88	1101.84	12337.88	11.61
65		26.92	0.00	243.65	94.65	243.65	0.23
66		27.04	0.00	25.29	7.01	25.29	0.02
67		27.28	0.00	2206.05	414.48	2206.05	2.08
68		27.51	0.00	143.61	41.34	143.61	0.14
69	Trans, Trans-alpha Farnesen	27.64	0.00	158.50	42.88	158.50	0.15
70		27.82	0.00	44.03	11.43	44.03	0.04
71		27.91	0.00	40.57	8.35	40.57	0.04
72		28.19	0.00	438.80	113.74	438.80	0.41
73		28.47	0.00	14.10	3.35	14.10	0.01
74		28.66	0.00	26.62	6.92	26.62	0.03
75		29.27	0.00	8.21	2.55	8.21	0.01
76		29.68	0.00	55.73	11.88	55.73	0.05
77		29.86	0.00	26.13	4.10	26.13	0.02
78	Spathulenol	30.12	0.00	262.30	47.73	262.30	0.25
79	Caryophyllene Oxide	30.28	0.00	203.65	37.12	203.65	0.19
80		30.45	0.00	17.16	4.43	17.16	0.02
81		30.54	0.00	24.26	5.92	24.26	0.02
82		30.65	0.00	25.28	6.06	25.28	0.02
83		30.73	0.00	27.58	6.72	27.58	0.03
84		30.99	0.00	89.61	20.48	89.61	0.08
85		31.12	0.00	190.07	27.47	190.07	0.18
86		31.34	0.00	27.17	6.22	27.17	0.03
87		31.48	0.00	12.89	3.06	12.89	0.01
88		31.77	0.00	91.40	20.92	91.40	0.09
89		32.33	0.00	206.87	35.16	206.87	0.19
90		32.54	0.00	22.25	5.06	22.25	0.02
91		32.65	0.00	86.67	18.05	86.67	0.08
92		32.76	0.00	98.06	13.06	98.06	0.09
93		33.31	0.00	49.35	5.77	49.35	0.05
94		33.88	0.00	26.86	5.25	26.86	0.03
95		34.60	0.00	19.44	3.76	19.44	0.02

3241 ABID

Instrument 6890

C:\HPCHEM\2\DATA\2026\  
32410000.D

Clary Sage Org

HP-5 5% Phenyl Methyl Siloxane

3241 ABID

30.000m

Salvia Sclarea

250.000um

France

0.250um

Sample/Solvent: 0.05g /0.5g

Injection Amount: 0.2uL

4/16/2026 1:06:15 PM

4/17/2026

4/16/2026 1:06:15 PM

8:58:24 AM

#	Compound Name	Meas. Ret.	Amount	Response	Height	Area	Area %
96		36.25	0.00	9.39	2.10	9.39	0.01
97		36.44	0.00	29.22	4.05	29.22	0.03
98		36.75	0.00	93.14	6.43	93.14	0.09
99		38.76	0.00	27.47	5.28	27.47	0.03
100		39.15	0.00	33.11	7.64	33.11	0.03
101	Slareol Oxide	39.36	0.00	270.56	24.65	270.56	0.25
102		40.16	0.00	122.73	28.39	122.73	0.12
103		41.20	0.00	13.17	3.60	13.17	0.01
104		41.42	0.00	152.85	38.13	152.85	0.14
105		41.70	0.00	151.22	18.44	151.22	0.14
106		41.99	0.00	119.96	29.43	119.96	0.11
107		42.43	0.00	28.22	8.31	28.22	0.03
108		42.49	0.00	53.83	12.49	53.83	0.05
109		42.63	0.00	34.19	4.89	34.19	0.03
110		42.89	0.00	122.62	22.47	122.62	0.12
111		43.46	0.00	46.96	6.82	46.96	0.04
112		43.58	0.00	12.72	3.01	12.72	0.01
113		44.08	0.00	40.13	6.35	40.13	0.04
114		45.41	0.00	51.19	12.42	51.19	0.05
115		45.67	0.00	9.95	2.47	9.95	0.01
116		46.47	0.00	326.84	19.55	326.84	0.31
117		46.79	0.00	20.89	4.25	20.89	0.02
118		47.30	0.00	179.67	15.03	179.67	0.17
119		47.46	0.00	74.11	10.21	74.11	0.07
120		47.60	0.00	36.19	6.51	36.19	0.03
121		47.72	0.00	39.70	5.86	39.70	0.04
122		48.04	0.00	44.86	6.34	44.86	0.04
123		50.03	0.00	626.12	95.37	626.12	0.59

