

3241

Instrument 6890

C:\HPCHEM\2\DATA\2023\  
32410000.D

Clary Sage ORG

HP-5 5% Phenyl Methyl Siloxane

3241-HZHN

30.000m

France

250.000um

Salvia sclarea

0.250um

Sample/Solvent: 0.06g/0.52g

Injection Amount: 0.2uL

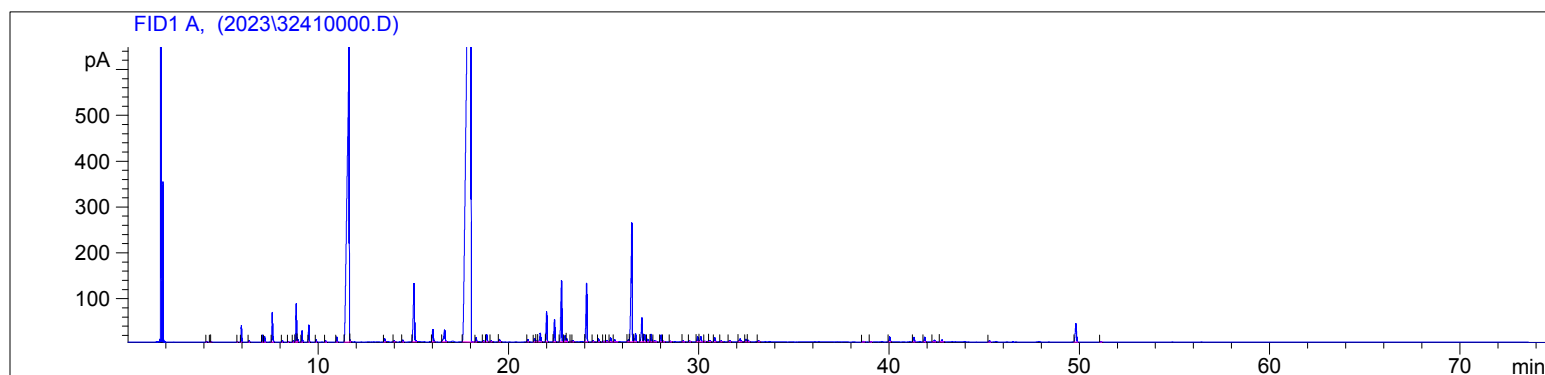
20:1 Split Ratio

10/9/2023 9:48:54 AM

10/9/2023

10/9/2023 9:48:54 AM

2:57:19 PM



#	Compound Name	Meas. Ret.	Amount	Response	Height	Area	Area %
1	trans-salvene	4.13	0.00	2.90	1.57	2.90	0.01
2		4.32	0.00	3.89	2.09	3.89	0.01
3		4.36	0.00	3.52	1.75	3.52	0.01
4		5.76	0.00	2.10	0.99	2.10	0.01
5	alpha pinene	5.95	0.00	80.99	36.26	80.99	0.28
6		6.36	0.00	8.09	3.50	8.09	0.03
7	sabinene	7.06	0.00	36.88	15.37	36.88	0.13
8	beta pinene	7.17	0.00	34.72	12.18	34.72	0.12
9	myrcene	7.58	0.00	168.67	64.86	168.67	0.58
10	alpha phellandrene	8.11	0.00	8.80	3.50	8.80	0.03
11	para cymene	8.42	0.00	2.84	1.14	2.84	0.01
12	d-limonene	8.68	0.00	9.25	3.49	9.25	0.03
13	1.8 cineol	8.84	0.00	223.84	83.75	223.84	0.77
14		8.91	0.00	16.71	6.56	16.71	0.06
15	cis-beta ocimene	9.14	0.00	63.07	24.22	63.07	0.22
16	trans-beta ocimene	9.51	0.00	98.16	36.98	98.16	0.34
17		9.89	0.00	14.35	5.15	14.35	0.05
18		10.39	0.00	9.46	2.96	9.46	0.03
19	terpinolene	10.98	0.00	32.02	10.72	32.02	0.11
20	linalool	11.63	0.00	5026.30	648.59	5026.30	17.19
21		11.68	0.00	9.53	4.24	9.53	0.03
22		13.49	0.00	27.55	7.52	27.55	0.09
23		13.99	0.00	10.86	2.84	10.86	0.04
24		14.45	0.00	13.61	4.22	13.61	0.05
25	alpha terpineol	15.04	0.00	577.17	127.15	577.17	1.97
26		16.03	0.00	95.29	26.84	95.29	0.33
27	nerol	16.65	0.00	135.73	25.98	135.73	0.46
28	linalyl acetate	18.04	0.00	18446.99	1416.04	18446.99	63.08
29		18.31	0.00	25.20	8.93	25.20	0.09
30		18.70	0.00	8.08	2.53	8.08	0.03
31	bornyl acetate	18.86	0.00	57.76	15.98	57.76	0.20
32		19.10	0.00	6.29	2.29	6.29	0.02
33		19.53	0.00	21.97	5.44	21.97	0.08
34		21.02	0.00	15.67	4.85	15.67	0.05
35		21.38	0.00	27.40	7.45	27.40	0.09
36		21.49	0.00	9.17	2.32	9.17	0.03
37		21.68	0.00	74.72	19.21	74.72	0.26
38	neryl acetate	22.01	0.00	215.97	66.11	215.97	0.74
39	geranyl acetate	22.42	0.00	168.99	48.39	168.99	0.58
40	alpha copaene	22.79	0.00	517.57	133.53	517.57	1.77

3241

Instrument 6890

C:\HPCHEM\2\DATA\2023\  
32410000.D

Clary Sage ORG

HP-5 5% Phenyl Methyl Siloxane

3241-HZHN

30.000m

France

250.000um

Salvia sclera

0.250um

Sample/Solvent: 0.06g/0.52g

Injection Amount: 0.2uL

20:1 Split Ratio

10/9/2023 9:48:54 AM

10/9/2023

10/9/2023 9:48:54 AM

2:57:19 PM

#	Compound Name	Meas. Ret.	Amount	Response	Height	Area	Area %
41	beta cubebene	22.98	0.00	46.62	13.33	46.62	0.16
42	beta elemene	23.06	0.00	22.97	7.04	22.97	0.08
43		23.29	0.00	6.31	1.87	6.31	0.02
44		23.40	0.00	8.36	2.44	8.36	0.03
45	beta caryophyllene	24.11	0.00	480.66	128.07	480.66	1.64
46		24.46	0.00	11.09	3.04	11.09	0.04
47		24.74	0.00	21.21	6.21	21.21	0.07
48	alpha humulene	25.02	0.00	7.19	1.98	7.19	0.02
49		25.18	0.00	12.13	3.23	12.13	0.04
50		25.37	0.00	31.18	8.80	31.18	0.11
51		25.59	0.00	17.15	4.31	17.15	0.06
52		26.30	0.00	16.17	4.05	16.17	0.06
53	germacrene D	26.49	0.00	1166.74	258.77	1166.74	3.99
54		26.68	0.00	73.66	18.05	73.66	0.25
55		27.02	0.00	196.37	51.74	196.37	0.67
56	trans trans alpha farnesene	27.16	0.00	60.90	16.23	60.90	0.21
57	gamma cadinene	27.32	0.00	17.74	5.31	17.74	0.06
58		27.50	0.00	55.13	16.47	55.13	0.19
59		27.66	0.00	16.35	2.29	16.35	0.06
60		28.02	0.00	53.13	14.82	53.13	0.18
61		28.15	0.00	5.90	1.67	5.90	0.02
62		28.50	0.00	5.11	1.52	5.11	0.02
63		29.19	0.00	5.95	1.73	5.95	0.02
64	spathulenol	29.53	0.00	7.50	1.98	7.50	0.03
65	caryophyllene oxide	29.95	0.00	41.83	11.08	41.83	0.14
66		30.12	0.00	51.63	11.23	51.63	0.18
67		30.32	0.00	2.78	1.02	2.78	0.01
68		30.57	0.00	9.13	2.53	9.13	0.03
69		30.85	0.00	31.20	8.68	31.20	0.11
70		31.17	0.00	7.89	2.20	7.89	0.03
71		31.62	0.00	8.92	2.58	8.92	0.03
72		32.18	0.00	36.84	6.38	36.84	0.13
73		32.49	0.00	16.66	5.08	16.66	0.06
74		32.60	0.00	13.58	3.15	13.58	0.05
75		33.15	0.00	8.39	2.06	8.39	0.03
76		38.62	0.00	6.11	1.44	6.11	0.02
77		39.02	0.00	4.47	1.31	4.47	0.02
78	sclareol oxide	40.02	0.00	40.44	10.78	40.44	0.14
79		41.30	0.00	36.54	9.92	36.54	0.12
80		41.86	0.00	37.69	10.56	37.69	0.13
81		42.37	0.00	17.34	3.86	17.34	0.06
82		42.77	0.00	18.95	4.16	18.95	0.06
83	manool	45.26	0.00	12.36	3.25	12.36	0.04
84	sclareol	49.81	0.00	180.68	40.20	180.68	0.62
85		51.13	0.00	4.10	1.27	4.10	0.01

