

Cypress Org

HP-5 5% Phenyl Methyl Siloxane

3261 ABID

30.000m

Cupressus sempervirens

250.000um

France

0.250um

Sample/Solvent: 0.06g /0.5g

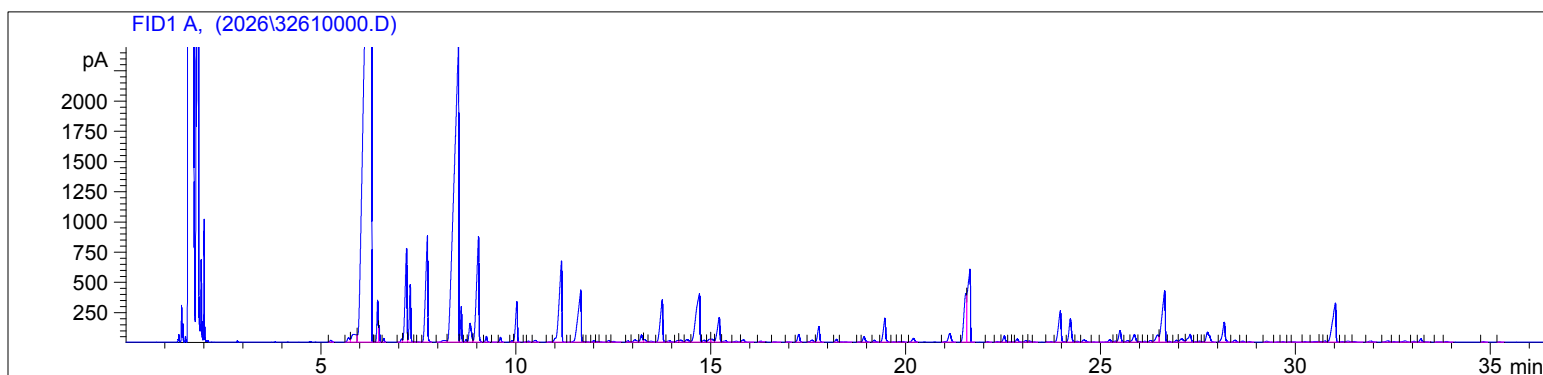
Injection Amount: 0.2uL

4/17/2026 9:57:08 AM

4/17/2026

4/17/2026 9:57:08 AM

11:20:27 AM



#	Compound Name	Meas. Ret.	Amount	Response	Height	Area	Area %
1		5.25	0.00	53.54	16.16	53.54	0.04
2	Tricyclene	5.70	0.00	160.59	33.96	160.59	0.13
3	Alpha Thujene	5.85	0.00	595.73	63.98	595.73	0.47
4	Alpha Pinene	6.30	0.00	58859.82	5627.36	58859.82	46.70
5		6.37	0.00	8.19	3.78	8.19	0.01
6	Alpha Fenchene	6.45	0.00	773.52	346.09	773.52	0.61
7	Camphene	6.49	0.00	218.34	136.84	218.34	0.17
8	Trans Pinene	6.61	0.00	70.38	31.87	70.38	0.06
9		7.07	0.00	78.37	26.47	78.37	0.06
10	Sabinene	7.19	0.00	2621.84	774.64	2621.84	2.08
11	Beta Pinene	7.29	0.00	1192.13	475.74	1192.13	0.95
12		7.41	0.00	10.35	3.68	10.35	0.01
13		7.49	0.00	13.04	4.33	13.04	0.01
14	Myrcene	7.73	0.00	3330.63	873.31	3330.63	2.64
15		8.16	0.00	118.31	13.26	118.31	0.09
16	Delta 3 Carene	8.53	0.00	19901.81	2445.49	19901.81	15.79
17		8.60	0.00	637.86	293.18	637.86	0.51
18		8.72	0.00	56.05	20.55	56.05	0.04
19	Para Cymene	8.82	0.00	660.16	157.72	660.16	0.52
20	d-Limonene	9.04	0.00	3748.54	874.36	3748.54	2.97
21		9.25	0.00	130.28	48.51	130.28	0.10
22		9.42	0.00	9.11	2.14	9.11	0.01
23		9.61	0.00	110.86	39.37	110.86	0.09
24		9.91	0.00	42.01	14.41	42.01	0.03
25	Gamma Terpinene	10.03	0.00	1088.83	334.59	1088.83	0.86
26		10.24	0.00	4.46	1.66	4.46	0.00
27		10.32	0.00	31.47	9.00	31.47	0.02
28		10.50	0.00	69.32	15.09	69.32	0.05
29		10.87	0.00	23.21	4.72	23.21	0.02
30	Terpinolene	11.18	0.00	3288.44	671.77	3288.44	2.61
31		11.36	0.00	3.54	1.13	3.54	0.00
32	Linalool	11.67	0.00	2428.22	431.28	2428.22	1.93
33		11.75	0.00	17.28	5.90	17.28	0.01
34		11.85	0.00	14.98	3.84	14.98	0.01
35		12.00	0.00	39.14	11.55	39.14	0.03
36		12.09	0.00	25.82	7.37	25.82	0.02
37		12.17	0.00	18.48	3.60	18.48	0.01
38		12.39	0.00	50.52	14.07	50.52	0.04
39		12.51	0.00	39.99	6.77	39.99	0.03
40		12.88	0.00	45.51	12.38	45.51	0.04

3261 ABID

Instrument 6890

C:\HPCHEM\2\DATA\2026\  
32610000.D

Cypress Org

HP-5 5% Phenyl Methyl Siloxane

3261 ABID

30.000m

Cupressus sempervirens

250.000um

France

0.250um

Sample/Solvent: 0.06g /0.5g

Injection Amount: 0.2uL

4/17/2026 9:57:08 AM

4/17/2026

4/17/2026 9:57:08 AM

11:20:27 AM

#	Compound Name	Meas. Ret.	Amount	Response	Height	Area	Area %
41		13.06	0.00	119.54	20.58	119.54	0.09
42		13.23	0.00	227.36	60.01	227.36	0.18
43		13.31	0.00	93.24	20.44	93.24	0.07
44		13.47	0.00	61.12	8.76	61.12	0.05
45	Isoborneol	13.76	0.00	1583.27	350.09	1583.27	1.26
46		13.94	0.00	76.02	11.19	76.02	0.06
47		14.15	0.00	51.67	13.52	51.67	0.04
48		14.23	0.00	102.57	17.95	102.57	0.08
49		14.39	0.00	125.62	22.27	125.62	0.10
50	Terpinen 4-ol	14.71	0.00	2793.14	400.44	2793.14	2.22
51		14.83	0.00	71.40	17.41	71.40	0.06
52		14.97	0.00	112.94	25.29	112.94	0.09
53		15.04	0.00	111.80	24.55	111.80	0.09
54	Alpha Terpineol	15.22	0.00	912.27	205.25	912.27	0.72
55		15.39	0.00	75.95	12.64	75.95	0.06
56		15.66	0.00	55.88	8.17	55.88	0.04
57		15.84	0.00	97.10	19.52	97.10	0.08
58		16.28	0.00	28.70	7.85	28.70	0.02
59		16.65	0.00	14.97	3.07	14.97	0.01
60		16.99	0.00	14.79	3.31	14.79	0.01
61		17.26	0.00	242.19	65.31	242.19	0.19
62		17.60	0.00	95.03	17.62	95.03	0.08
63		17.78	0.00	460.94	128.08	460.94	0.37
64		18.23	0.00	84.00	23.16	84.00	0.07
65		18.45	0.00	24.69	2.87	24.69	0.02
66		18.82	0.00	9.25	2.77	9.25	0.01
67		18.94	0.00	184.50	45.58	184.50	0.15
68		19.20	0.00	64.13	16.79	64.13	0.05
69	Bornyl Acetate	19.47	0.00	815.77	197.88	815.77	0.65
70		19.72	0.00	22.42	3.82	22.42	0.02
71		19.85	0.00	34.22	6.09	34.22	0.03
72		19.94	0.00	27.16	5.90	27.16	0.02
73		20.20	0.00	148.94	30.76	148.94	0.12
74	Terpin-4-ol Acetate	21.14	0.00	368.32	70.94	368.32	0.29
75		21.55	0.00	1780.24	398.13	1780.24	1.41
76	Terpinyl Acetate	21.65	0.00	3112.81	601.68	3112.81	2.47
77		22.11	0.00	17.85	4.82	17.85	0.01
78		22.35	0.00	27.66	5.80	27.66	0.02
79		22.54	0.00	189.12	52.13	189.12	0.15
80		22.68	0.00	13.20	3.83	13.20	0.01
81		22.75	0.00	8.39	2.63	8.39	0.01
82		22.87	0.00	106.64	26.09	106.64	0.08
83		23.08	0.00	53.68	12.97	53.68	0.04
84		23.17	0.00	37.82	9.63	37.82	0.03
85		23.30	0.00	7.28	1.99	7.28	0.01
86		23.73	0.00	28.87	5.54	28.87	0.02
87	Alpha Cedrene	23.97	0.00	1219.95	258.01	1219.95	0.97
88	Beta Caryophyllene	24.23	0.00	819.09	191.17	819.09	0.65
89		24.40	0.00	34.64	7.83	34.64	0.03
90		24.57	0.00	114.25	18.89	114.25	0.09
91		24.83	0.00	12.18	2.49	12.18	0.01
92		25.24	0.00	96.34	19.22	96.34	0.08
93		25.38	0.00	37.07	9.45	37.07	0.03
94	Alpha Humulene	25.50	0.00	386.01	96.38	386.01	0.31
95		25.70	0.00	64.12	13.64	64.12	0.05

3261 ABID

Instrument 6890

C:\HPCHEM\2\DATA\2026\  
32610000.D

Cypress Org

HP-5 5% Phenyl Methyl Siloxane

3261 ABID

30.000m

Cupressus sempervirens

250.000um

France

0.250um

Sample/Solvent: 0.06g /0.5g

Injection Amount: 0.2uL

4/17/2026 9:57:08 AM

4/17/2026

4/17/2026 9:57:08 AM

11:20:27 AM

#	Compound Name	Meas. Ret.	Amount	Response	Height	Area	Area %
96		25.87	0.00	320.06	62.81	320.06	0.25
97		26.00	0.00	26.84	5.73	26.84	0.02
98		26.14	0.00	37.45	8.42	37.45	0.03
99		26.29	0.00	66.66	13.36	66.66	0.05
100	Gamma Muurolene	26.46	0.00	315.45	59.81	315.45	0.25
101	Germacrene D	26.65	0.00	2380.52	421.91	2380.52	1.89
102		26.76	0.00	28.97	7.82	28.97	0.02
103		26.95	0.00	62.05	15.91	62.05	0.05
104		27.07	0.00	177.80	28.04	177.80	0.14
105		27.30	0.00	356.32	65.04	356.32	0.28
106		27.45	0.00	23.52	5.94	23.52	0.02
107		27.54	0.00	38.97	9.42	38.97	0.03
108		27.62	0.00	14.95	4.52	14.95	0.01
109	Gamma Cadinene	27.75	0.00	503.19	81.71	503.19	0.40
110	Delta Cadinene	28.18	0.00	750.21	163.89	750.21	0.60
111		28.45	0.00	75.03	16.67	75.03	0.06
112		28.65	0.00	37.29	9.42	37.29	0.03
113		28.82	0.00	27.56	5.49	27.56	0.02
114		29.26	0.00	39.63	7.74	39.63	0.03
115		29.55	0.00	12.40	2.67	12.40	0.01
116		29.68	0.00	22.76	4.56	22.76	0.02
117		29.84	0.00	9.82	2.24	9.82	0.01
118		29.97	0.00	21.72	2.75	21.72	0.02
119		30.25	0.00	34.84	5.67	34.84	0.03
120	Caryophyllene Oxide	30.50	0.00	53.15	6.27	53.15	0.04
121		30.64	0.00	26.28	5.28	26.28	0.02
122		30.76	0.00	38.11	9.82	38.11	0.03
123	Cedrol	31.03	0.00	1958.25	322.35	1958.25	1.55
124		31.21	0.00	21.88	4.92	21.88	0.02
125		31.35	0.00	51.66	8.37	51.66	0.04
126		31.51	0.00	32.26	5.29	32.26	0.03
127		31.94	0.00	50.52	8.14	50.52	0.04
128		32.37	0.00	64.41	9.69	64.41	0.05
129		32.53	0.00	22.78	4.52	22.78	0.02
130		32.82	0.00	64.23	9.25	64.23	0.05
131		33.04	0.00	26.68	7.12	26.68	0.02
132		33.22	0.00	92.86	25.27	92.86	0.07
133		33.34	0.00	8.25	1.78	8.25	0.01
134		33.66	0.00	18.29	2.81	18.29	0.01
135		33.87	0.00	28.13	5.84	28.13	0.02
136		34.82	0.00	16.27	4.20	16.27	0.01
137		35.24	0.00	7.19	1.60	7.19	0.01

