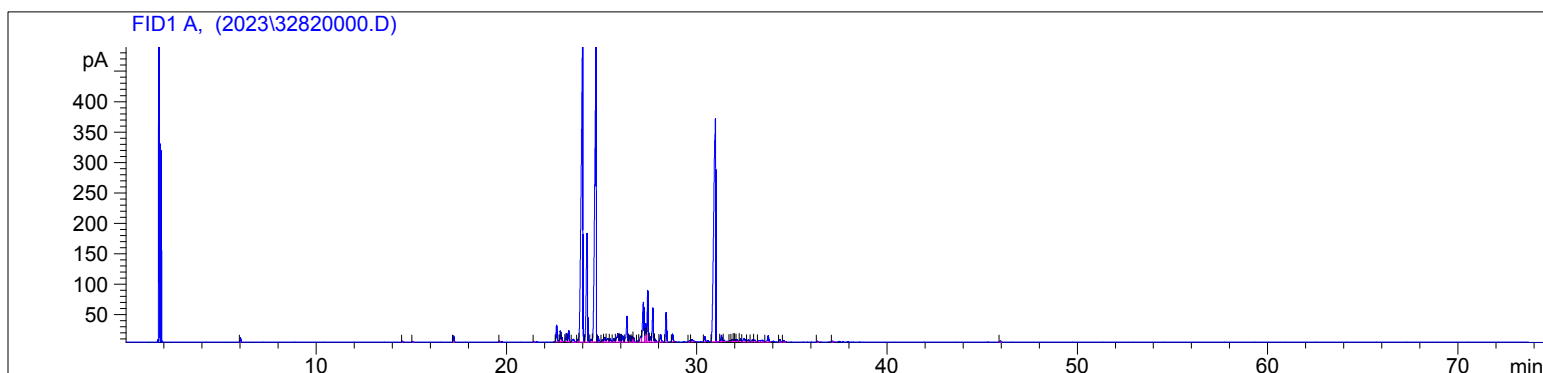


Cedar Virginia Conv.
3282-IBFN
Cananda
Juniperus virginiana
Sample/Solvent: 0.09g/0.51g
Injection Amount: 0.2uL
20:1 Split Ratio

HP-5 5% Phenyl Methyl Siloxane
30.000m
250.000um
0.250um

9/29/2023 10:34:45 AM
9/29/2023 10:34:45 AM

9/29/2023
3:21:18 PM



#	Compound Name	Meas. Ret.	Amount	Response	Height	Area	Area %
1	alpha pinene	6.01	0.00	15.74	7.00	15.74	0.13
2		14.53	0.00	5.25	1.66	5.25	0.04
3		15.08	0.00	3.48	1.12	3.48	0.03
4		17.23	0.00	33.13	10.40	33.13	0.28
5		19.65	0.00	3.61	1.47	3.61	0.03
6		21.45	0.00	3.52	1.17	3.52	0.03
7		22.64	0.00	104.96	27.46	104.96	0.87
8	isolongifolene	22.84	0.00	64.99	18.06	64.99	0.54
9		22.92	0.00	21.89	7.23	21.89	0.18
10		23.15	0.00	56.27	13.37	56.27	0.47
11		23.28	0.00	66.09	18.34	66.09	0.55
12	beta longipinene	23.51	0.00	32.16	4.39	32.16	0.27
13		23.76	0.00	18.63	5.00	18.63	0.15
14	alpha cedrene	24.00	0.00	2990.67	496.84	2990.67	24.82
15	beta cedrene	24.24	0.00	804.20	178.67	804.20	6.67
16		24.45	0.00	22.26	4.42	22.26	0.18
17	cis-thujopsene	24.71	0.00	2702.39	489.40	2702.39	22.43
18		24.83	0.00	30.08	8.55	30.08	0.25
19		25.03	0.00	14.10	3.51	14.10	0.12
20		25.18	0.00	28.84	7.43	28.84	0.24
21		25.32	0.00	36.30	5.56	36.30	0.30
22		25.45	0.00	24.45	4.86	24.45	0.20
23		25.65	0.00	24.45	5.68	24.45	0.20
24	alpha acoradiene	25.86	0.00	78.34	13.25	78.34	0.65
25	beta acoradiene	25.97	0.00	47.67	12.48	47.67	0.40
26	beta chamigrene	26.11	0.00	42.69	10.00	42.69	0.35
27		26.34	0.00	193.47	42.15	193.47	1.61
28	gamma curcumene	26.49	0.00	36.57	10.35	36.57	0.30
29		26.61	0.00	35.10	9.54	35.10	0.29
30		26.69	0.00	27.32	7.33	27.32	0.23
31		26.90	0.00	7.71	1.96	7.71	0.06
32		27.08	0.00	52.95	9.96	52.95	0.44
33	beta himachalene	27.20	0.00	357.56	64.95	357.56	2.97
34	alpha himachalene	27.32	0.00	109.27	30.00	109.27	0.91
35	cuparene	27.43	0.00	320.95	84.51	320.95	2.66
36		27.58	0.00	33.43	8.06	33.43	0.28
37	alpha alaskene	27.70	0.00	225.09	55.84	225.09	1.87
38		27.82	0.00	18.09	4.77	18.09	0.15
39		28.11	0.00	54.65	12.00	54.65	0.45
40	trans-gamma bisabolene	28.40	0.00	183.55	47.90	183.55	1.52

3282

Instrument 6890

C:\HPCHEM\2\DATA\2023\
32820000.DCedar Virginia Conv.
3282-IBFN
Cananda
Juniperus virginiana
Sample/Solvent: 0.09g/0.51g
Injection Amount: 0.2uL
20:1 Split RatioHP-5 5% Phenyl Methyl Siloxane
30.000m
250.000um
0.250um9/29/2023 10:34:45 AM
9/29/2023 10:34:45 AM9/29/2023
3:21:18 PM

#	Compound Name	Meas. Ret.	Amount	Response	Height	Area	Area %
41		28.73	0.00	50.40	12.53	50.40	0.42
42		29.62	0.00	7.56	2.03	7.56	0.06
43		29.76	0.00	22.50	3.95	22.50	0.19
44	viridiflorol	30.43	0.00	34.64	8.46	34.64	0.29
45	cedrol	30.99	0.00	2651.42	365.80	2651.42	22.01
46		31.30	0.00	43.29	10.68	43.29	0.36
47	epicedrol	31.44	0.00	9.27	2.46	9.27	0.08
48		31.75	0.00	5.29	1.49	5.29	0.04
49		31.86	0.00	12.80	3.05	12.80	0.11
50		31.94	0.00	11.37	3.36	11.37	0.09
51		32.01	0.00	9.37	2.90	9.37	0.08
52		32.11	0.00	16.43	3.48	16.43	0.14
53		32.31	0.00	21.08	4.38	21.08	0.17
54	beta acorneol	32.49	0.00	35.41	5.11	35.41	0.29
55		32.71	0.00	19.93	3.38	19.93	0.17
56		32.93	0.00	13.78	3.69	13.78	0.11
57		33.05	0.00	19.32	3.17	19.32	0.16
58		33.42	0.00	39.75	3.13	39.75	0.33
59	alpha bisabolol	33.76	0.00	46.33	9.90	46.33	0.38
60		34.37	0.00	17.33	3.92	17.33	0.14
61		34.58	0.00	10.42	2.50	10.42	0.09
62		36.35	0.00	4.96	1.36	4.96	0.04
63		37.15	0.00	6.05	1.66	6.05	0.05
64		45.96	0.00	8.07	2.19	8.07	0.07





40

50

min

45.959