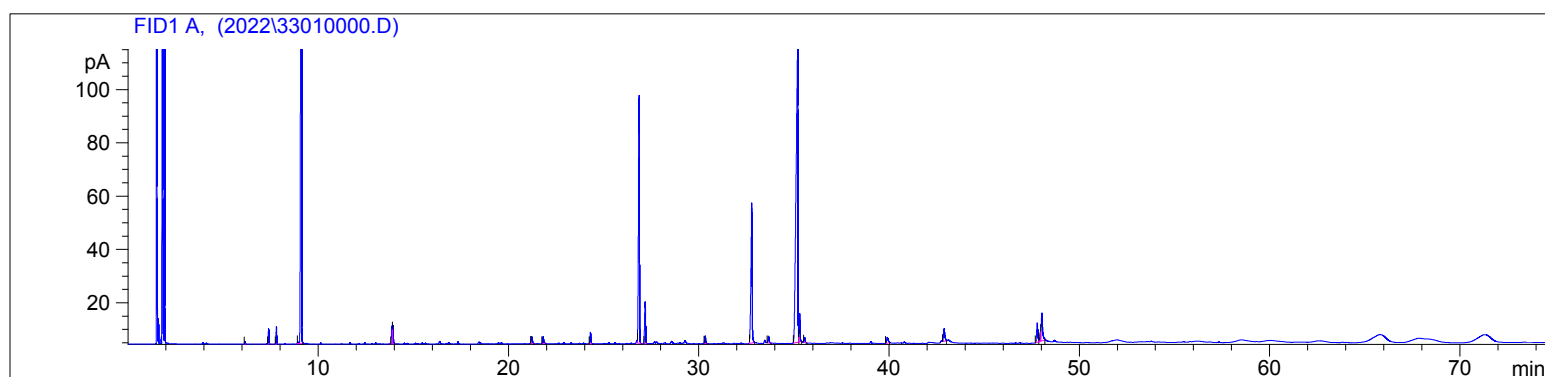
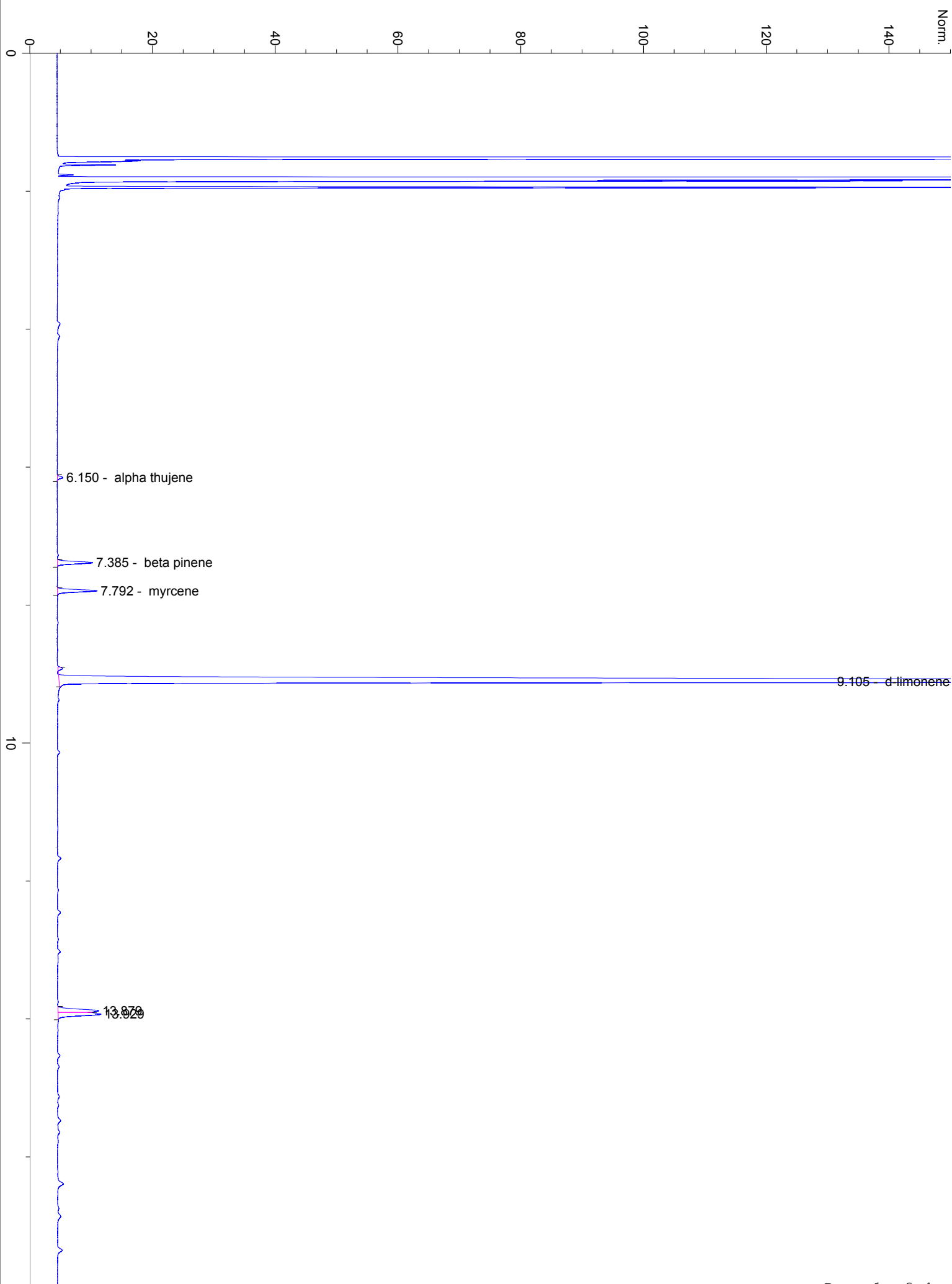


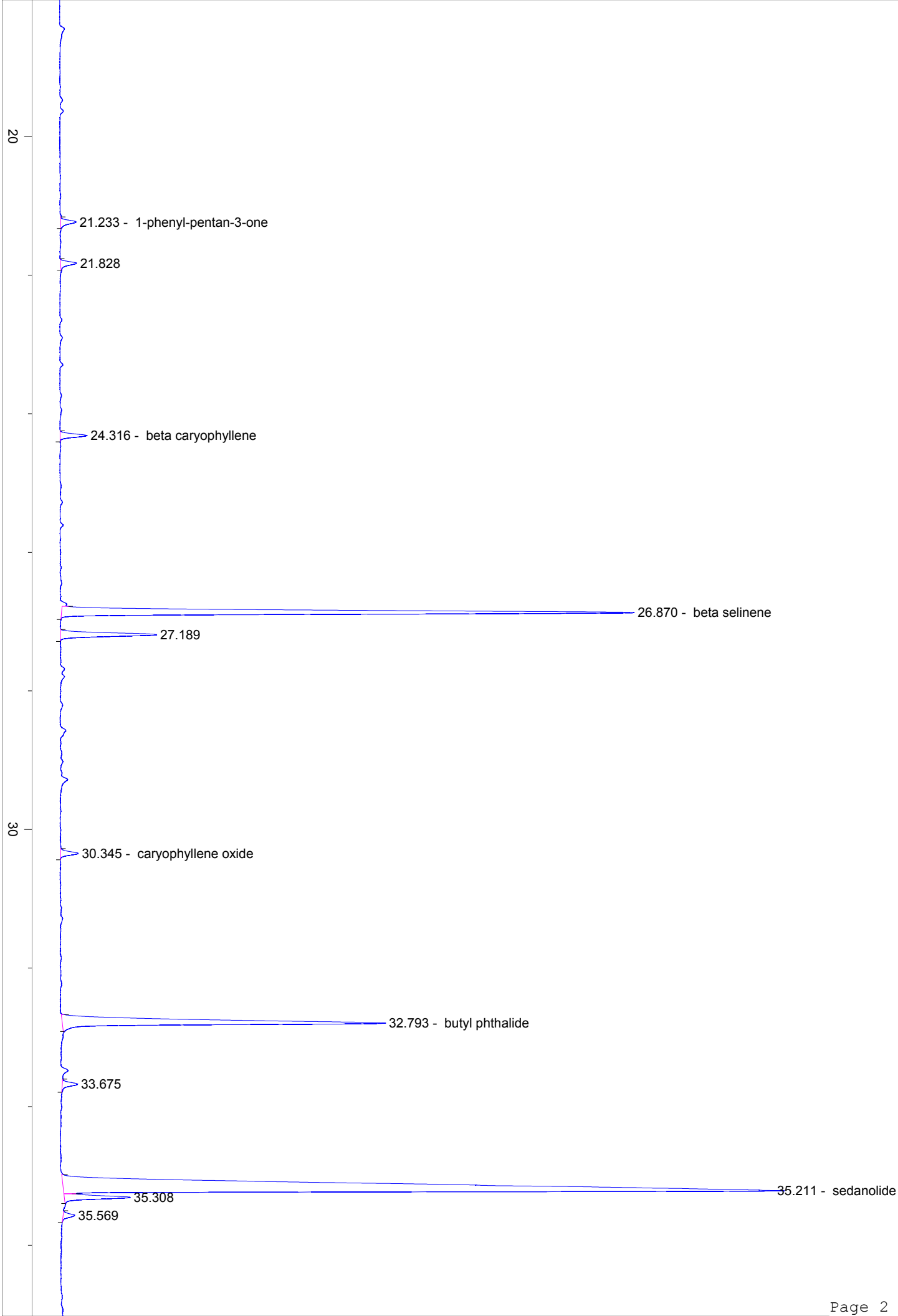
3301-AAAL

Instrument 6890

C:\HPCHEM\2\DATA\2022\
33010000.DCelery CO2 Organic
3301-AAAL
India
Apium graveolensHP-5 5% Phenyl Methyl Siloxane
30.000m
250.000um
0.250umSample/Solvent Ratio: 0.06g/0.
45g/0.05g (alcohol)
Injection Amount: 0.2uL
20:1 Split Ratio ->1/13/2022 1:01:31 PM
1/13/2022 1:01:31 PM1/14/2022
12:43:10 PM

#	Compound Name	Meas. Ret.	Amount	Response	Height	Area	Area %
1	alpha thujene	6.15	100.00	2.06	0.93	2.06	0.07
2	beta pinene	7.38	100.00	14.28	5.75	14.28	0.51
3	myrcene	7.79	100.00	15.70	6.47	15.70	0.56
4	d-limonene	9.10	100.00	1080.70	357.72	1080.70	38.40
5		13.88	100.00	19.26	6.64	19.26	0.68
6		13.93	100.00	21.05	6.95	21.05	0.75
7	1-phenyl-pentan-3-one	21.23	100.00	10.05	2.50	10.05	0.36
8		21.83	100.00	9.92	2.60	9.92	0.35
9	beta caryophyllene	24.32	100.00	14.96	4.38	14.96	0.53
10	beta selinene	26.87	100.00	342.63	92.88	342.63	12.17
11		27.19	100.00	56.49	15.60	56.49	2.01
12	caryophyllene oxide	30.35	100.00	10.29	2.85	10.29	0.37
13	butyl phthalide	32.79	100.00	234.98	52.39	234.98	8.35
14		33.68	100.00	9.58	2.46	9.58	0.34
15	sedanolide	35.21	100.00	797.14	115.13	797.14	28.32
16		35.31	100.00	36.97	10.66	36.97	1.31
17		35.57	100.00	7.01	1.87	7.01	0.25
18		39.90	100.00	12.11	2.13	12.11	0.43
19		42.89	100.00	22.56	4.64	22.56	0.80
20		47.78	100.00	31.92	7.21	31.92	1.13
21		47.96	100.00	12.08	3.70	12.08	0.43
22		48.02	100.00	52.78	10.46	52.78	1.88





40

39.896

42.887

47.781

47.965

48.025

Area: 12.077

Area: 52.7782

50

