

3321-AZCHH

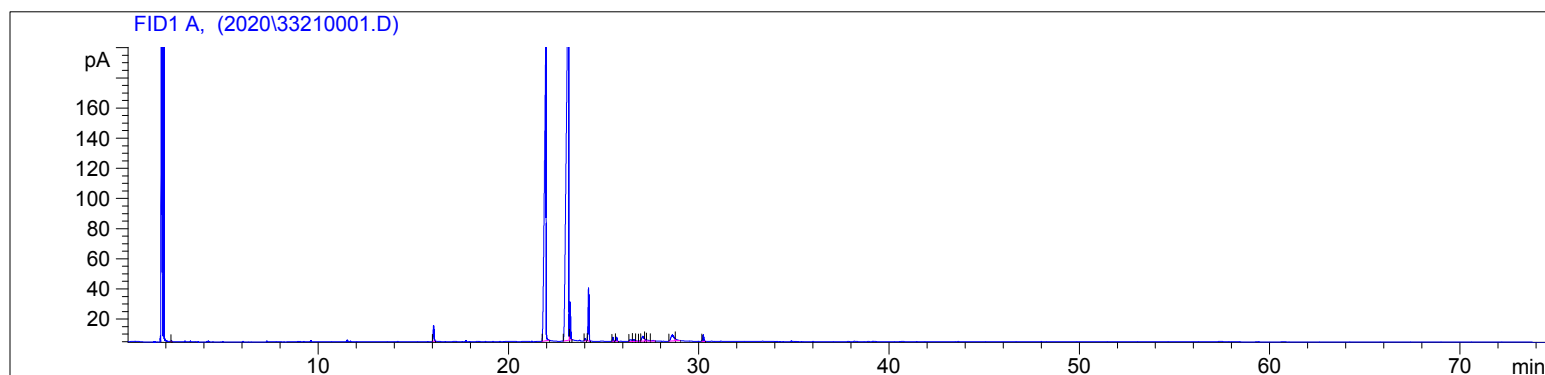
Instrument 6890

C:\HPCHEM\2\DATA\2020\  
33210001.DCatnip Organic  
3321-AZCHH  
Canada  
Nepeta catariaHP-5 5% Phenyl Methyl Siloxane  
30.000m  
250.000um  
0.250um

Sample/Solvent: 0.06g/0.60g

Injection Amount: 0.2uL

-&gt;

1/6/2020 3:04:59 PM  
1/6/2020 3:04:59 PM1/6/2020  
5:32:36 PM

#	Compound Name	Meas. Ret.	Amount	Response	Height	Area	Area %
1		2.28	100.00	0.76	0.68	0.76	0.02
2		16.07	100.00	35.73	10.34	35.73	0.96
3	nepetalactone 1	21.97	100.00	1208.41	200.40	1208.41	32.52
4	nepetalactone 2	23.16	100.00	2123.40	270.14	2123.40	57.15
5	nepetalactone 3	23.25	100.00	78.71	25.10	78.71	2.12
6		24.03	100.00	5.09	1.35	5.09	0.14
7	beta caryophyllene	24.21	100.00	120.81	35.03	120.81	3.25
8	alpha humulene	25.50	100.00	8.97	2.67	8.97	0.24
9	trans-beta farnesene	25.69	100.00	8.29	2.47	8.29	0.22
10		26.40	100.00	7.04	0.98	7.04	0.19
11	valencene	26.58	100.00	7.60	1.08	7.60	0.20
12		26.68	100.00	2.01	0.35	2.01	0.05
13		26.96	100.00	1.46	0.37	1.46	0.04
14	nepetalactone 4	27.06	100.00	23.67	3.17	23.67	0.64
15		27.15	100.00	6.40	1.50	6.40	0.17
16		27.26	100.00	5.52	0.67	5.52	0.15
17		27.61	100.00	3.66	0.46	3.66	0.10
18	nepetalactone 6	28.61	100.00	43.73	4.00	43.73	1.18
19		28.77	100.00	7.83	1.30	7.83	0.21
20	caryophyllene oxide	30.24	100.00	16.39	4.21	16.39	0.44



20

21.972 - nepetalactone 1

23.160 - nepetalactone 2

23.248 - nepetalactone 3

24.029

24.214 - beta caryophyllene

Area: 5.08861

25.497 - alpha humulene  
25.687 - trans-beta farnesene

26.400  
26.576 - valencene

26.665 - nepetalactone 4

26.899  
27.133  
27.367  
27.601  
27.835  
28.069  
28.303  
28.537  
28.771  
Area: 3.66013  
Area: 5.52084  
Area: 3.66013  
Area: 43.7302  
Area: 7.82988

28.613 - nepetalactone 6

28.771  
Area: 43.7302  
Area: 7.82988

30

30.242 - caryophyllene oxide

40

50

