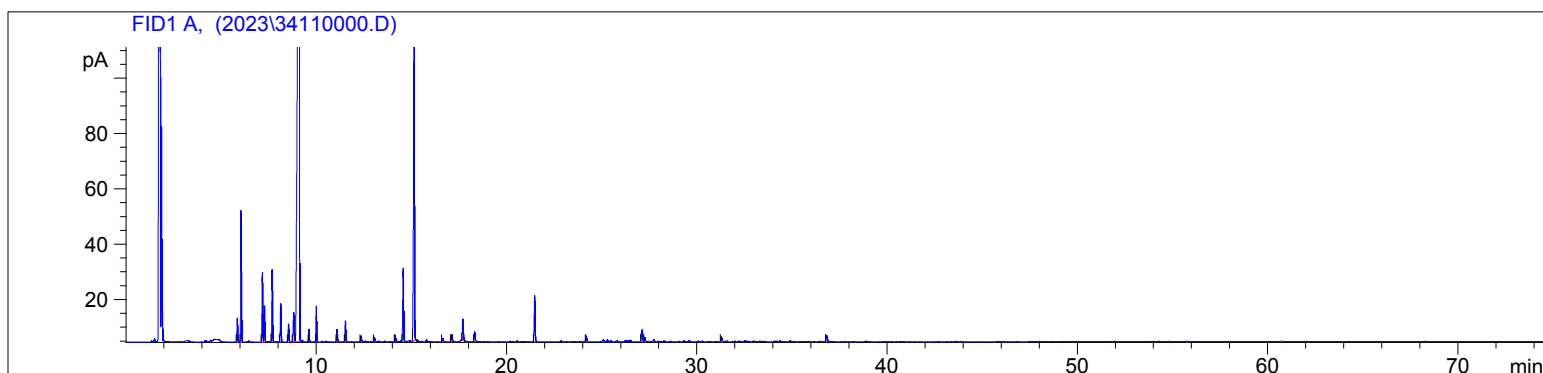


3411

Instrument 6890

C:\HPCHEM\2\DATA\2023\
34110000.DEucalyptus Radiata Organic
3411-BBDN
South Africa
Eucalyptus radiata
Sample/Solvent: 0.06g/0.48g
Injection Amount: 0.2uL
15:1 Split RatioHP-5 5% Phenyl Methyl Siloxane
30.000m
250.000um
0.250um3/1/2023 9:16:01 AM
3/1/2023 9:16:01 AM3/1/2023
10:56:06 AM

#	Compound Name	Meas. Ret.	Amount	Response	Height	Area	Area %
1	alpha thujene	5.85	0.00	22.35	8.55	22.35	0.52
2	alpha pinene	6.04	0.00	126.41	47.39	126.41	2.93
3	sabinene	7.16	0.00	68.50	25.12	68.50	1.59
4	beta pinene	7.27	0.00	36.54	13.01	36.54	0.85
5	myrcene	7.68	0.00	70.18	26.07	70.18	1.62
6	alpha phellandrene	8.13	0.00	38.80	13.79	38.80	0.90
7	alpha terpinene	8.54	0.00	19.06	6.37	19.06	0.44
8	para cymene	8.81	0.00	38.38	10.47	38.38	0.89
9	1,8-cineol	9.09	0.00	3156.96	708.04	3156.96	73.10
10	trans-beta ocimene	9.63	0.00	12.25	4.53	12.25	0.28
11	gamma terpinene	10.01	0.00	35.72	12.87	35.72	0.83
12	terpinolene	11.10	0.00	13.85	4.53	13.85	0.32
13	linalool	11.54	0.00	22.10	7.47	22.10	0.51
14		12.37	0.00	5.89	2.02	5.89	0.14
15	trans-pinocarveol	13.07	0.00	4.34	1.42	4.34	0.10
16	borneol	14.16	0.00	7.42	2.32	7.42	0.17
17	terpinen-4-ol	14.58	0.00	85.02	26.45	85.02	1.97
18	alpha terpineol	15.16	0.00	401.86	111.19	401.86	9.31
19	nerol	16.66	0.00	4.48	1.19	4.48	0.10
20	neral (citral B)	17.13	0.00	8.63	2.62	8.63	0.20
21	geraniol	17.71	0.00	27.36	7.79	27.36	0.63
22	geranial (citral A)	18.33	0.00	12.39	3.41	12.39	0.29
23	terpinyl acetate	21.49	0.00	55.24	16.55	55.24	1.28
24	beta caryophyllene	24.20	0.00	7.28	2.07	7.28	0.17
25		27.13	0.00	17.80	4.21	17.80	0.41
26		27.28	0.00	5.23	1.44	5.23	0.12
27		31.30	0.00	6.17	1.73	6.17	0.14
28		36.84	0.00	8.45	2.09	8.45	0.20

