

3421 DZGB

Instrument 6890

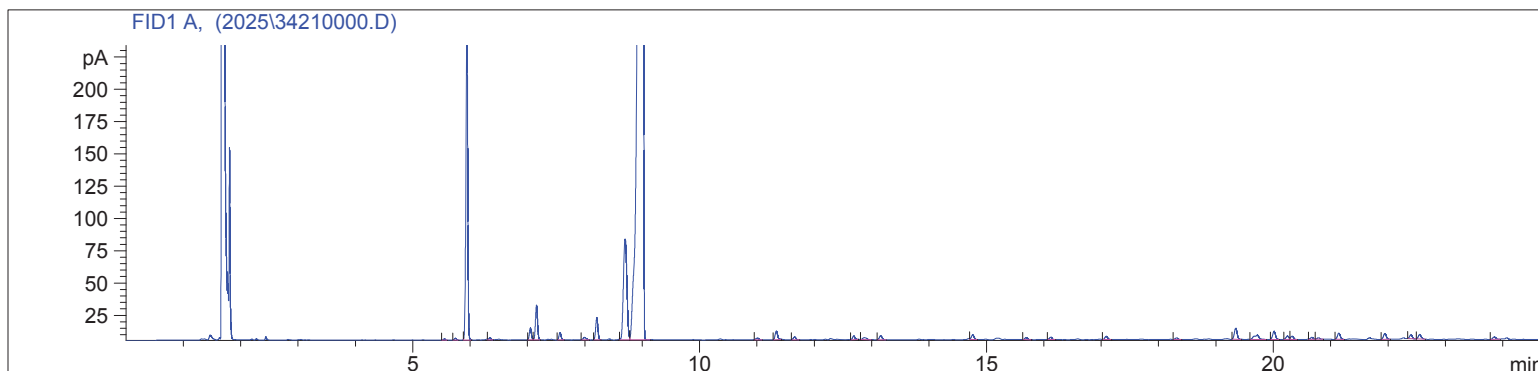
C:\HPCHEM\2\DATA\2025\
34210000.D

Eucalyptus Globulus, Sweet Org
3421-DZGB
Eucalyptus Globulus
India
Sample/Solvent: 0.05g/0.50g
Injection Amount: 0.2uL
20:1 Split Ratio

HP-5 5% Phenyl Methyl Siloxane
30.000m
250.000um
0.250um

4/24/2025 11:23:27 AM
4/24/2025 11:23:27 AM

4/24/2025
12:01:38 PM



#	Compound Name	Meas. Ret.	Amount	Response	Height	Area	Area %
1		5.55	0.00	2.11	0.93	2.11	0.03
2		5.74	0.00	3.12	1.40	3.12	0.05
3	Alpha Pinene	5.94	0.00	534.28	234.15	534.28	8.56
4	Sabinene	6.34	0.00	4.20	1.76	4.20	0.07
5	Beta Pinene	7.05	0.00	22.06	9.16	22.06	0.35
6	Myrcene	7.15	0.00	66.83	26.83	66.83	1.07
7		7.56	0.00	14.58	5.72	14.58	0.23
8		7.99	0.00	7.22	1.97	7.22	0.12
9	Para Cymene	8.21	0.00	46.14	17.37	46.14	0.74
10	d-Limonene	8.70	0.00	328.81	77.75	328.81	5.27
11	1.8 Cineol	9.01	0.00	4957.29	954.00	4957.29	79.43
12		11.01	0.00	5.07	1.41	5.07	0.08
13	Gamma Terpinene	11.34	0.00	20.62	6.73	20.62	0.33
14		11.66	0.00	7.04	2.29	7.04	0.11
15		12.69	0.00	8.52	2.83	8.52	0.14
16		12.87	0.00	6.96	1.49	6.96	0.11
17	Terpinolene	13.16	0.00	10.11	3.07	10.11	0.16
18		14.76	0.00	11.56	3.59	11.56	0.19
19		15.69	0.00	5.46	1.65	5.46	0.09
20		16.12	0.00	6.34	1.89	6.34	0.10
21		17.09	0.00	8.26	2.47	8.26	0.13
22		18.32	0.00	4.38	1.32	4.38	0.07
23		19.35	0.00	29.26	8.60	29.26	0.47
24		19.72	0.00	20.52	3.36	20.52	0.33
25		20.02	0.00	21.59	6.27	21.59	0.35
26		20.25	0.00	8.86	2.59	8.86	0.14
27		20.33	0.00	9.07	2.52	9.07	0.15
28		20.68	0.00	5.16	1.48	5.16	0.08
29		20.79	0.00	3.45	1.11	3.45	0.06
30		21.14	0.00	16.61	4.84	16.61	0.27
31		21.95	0.00	15.39	4.48	15.39	0.25
32		22.40	0.00	10.11	3.21	10.11	0.16
33		22.56	0.00	12.97	3.61	12.97	0.21
34		23.85	0.00	6.89	1.83	6.89	0.11

