

3421 DZGD

Instrument 6890

C:\HPCHEM\2\DATA\2026\
34210000.D

Eucalyptus Globulus, Sweet Org

HP-5 5% Phenyl Methyl Siloxane

3421-DZGD

30.000m

Eucalyptus Globulus

250.000um

India

0.250um

Sample/Solvent: 0.05g/0.50g

Injection Amount: 0.2uL

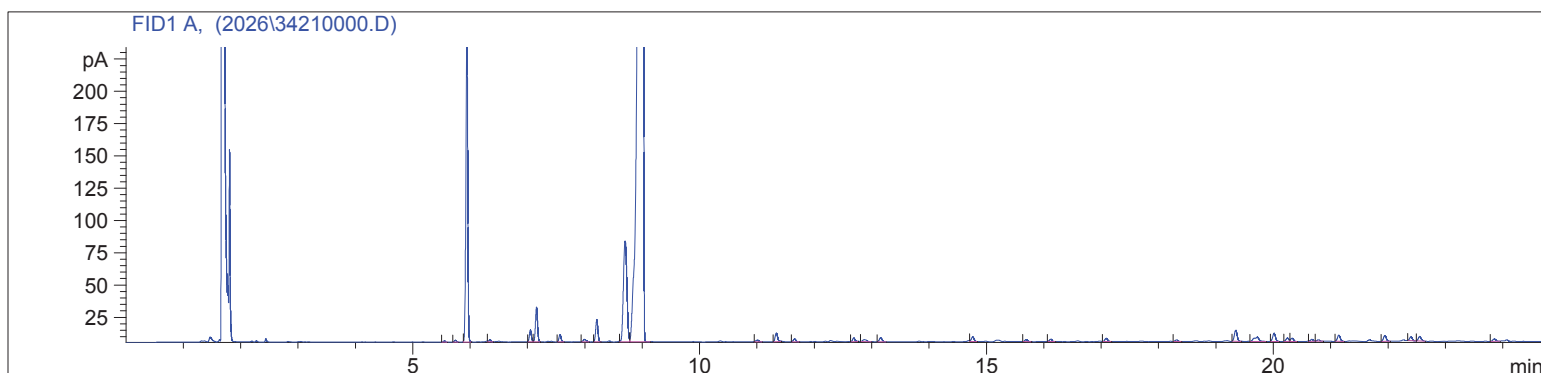
20:1 Split Ratio

4/7/2026 11:23:27 AM

4/7/2026

4/7/2026 11:23:27 AM

12:01:38 PM



#	Compound Name	Meas. Ret.	Amount	Response	Height	Area	Area %
1		5.55	0.00	2.11	0.93	2.11	0.03
2		5.74	0.00	3.12	1.40	3.12	0.05
3	Alpha Pinene	5.94	0.00	534.28	234.15	534.28	8.56
4	Sabinene	6.34	0.00	4.20	1.76	4.20	0.07
5	Beta Pinene	7.05	0.00	22.06	9.16	22.06	0.35
6	Myrcene	7.15	0.00	66.83	26.83	66.83	1.07
7		7.56	0.00	14.58	5.72	14.58	0.23
8		7.99	0.00	7.22	1.97	7.22	0.12
9	Para Cymene	8.21	0.00	46.14	17.37	46.14	0.74
10	d-Limonene	8.70	0.00	328.81	77.75	328.81	5.27
11	1.8 Cineol	9.01	0.00	4957.29	954.00	4957.29	79.43
12		11.01	0.00	5.07	1.41	5.07	0.08
13	Gamma Terpinene	11.34	0.00	20.62	6.73	20.62	0.33
14		11.66	0.00	7.04	2.29	7.04	0.11
15		12.69	0.00	8.52	2.83	8.52	0.14
16		12.87	0.00	6.96	1.49	6.96	0.11
17	Terpinolene	13.16	0.00	10.11	3.07	10.11	0.16
18		14.76	0.00	11.56	3.59	11.56	0.19
19		15.69	0.00	5.46	1.65	5.46	0.09
20		16.12	0.00	6.34	1.89	6.34	0.10
21		17.09	0.00	8.26	2.47	8.26	0.13
22		18.32	0.00	4.38	1.32	4.38	0.07
23		19.35	0.00	29.26	8.60	29.26	0.47
24		19.72	0.00	20.52	3.36	20.52	0.33
25		20.02	0.00	21.59	6.27	21.59	0.35
26		20.25	0.00	8.86	2.59	8.86	0.14
27		20.33	0.00	9.07	2.52	9.07	0.15
28		20.68	0.00	5.16	1.48	5.16	0.08
29		20.79	0.00	3.45	1.11	3.45	0.06
30		21.14	0.00	16.61	4.84	16.61	0.27
31		21.95	0.00	15.39	4.48	15.39	0.25
32		22.40	0.00	10.11	3.21	10.11	0.16
33		22.56	0.00	12.97	3.61	12.97	0.21
34		23.85	0.00	6.89	1.83	6.89	0.11

