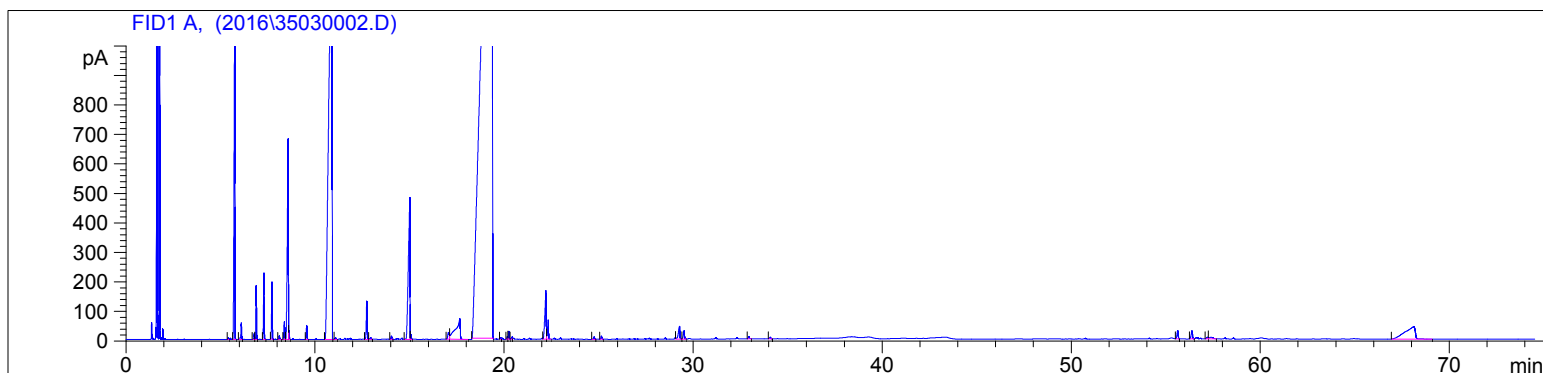
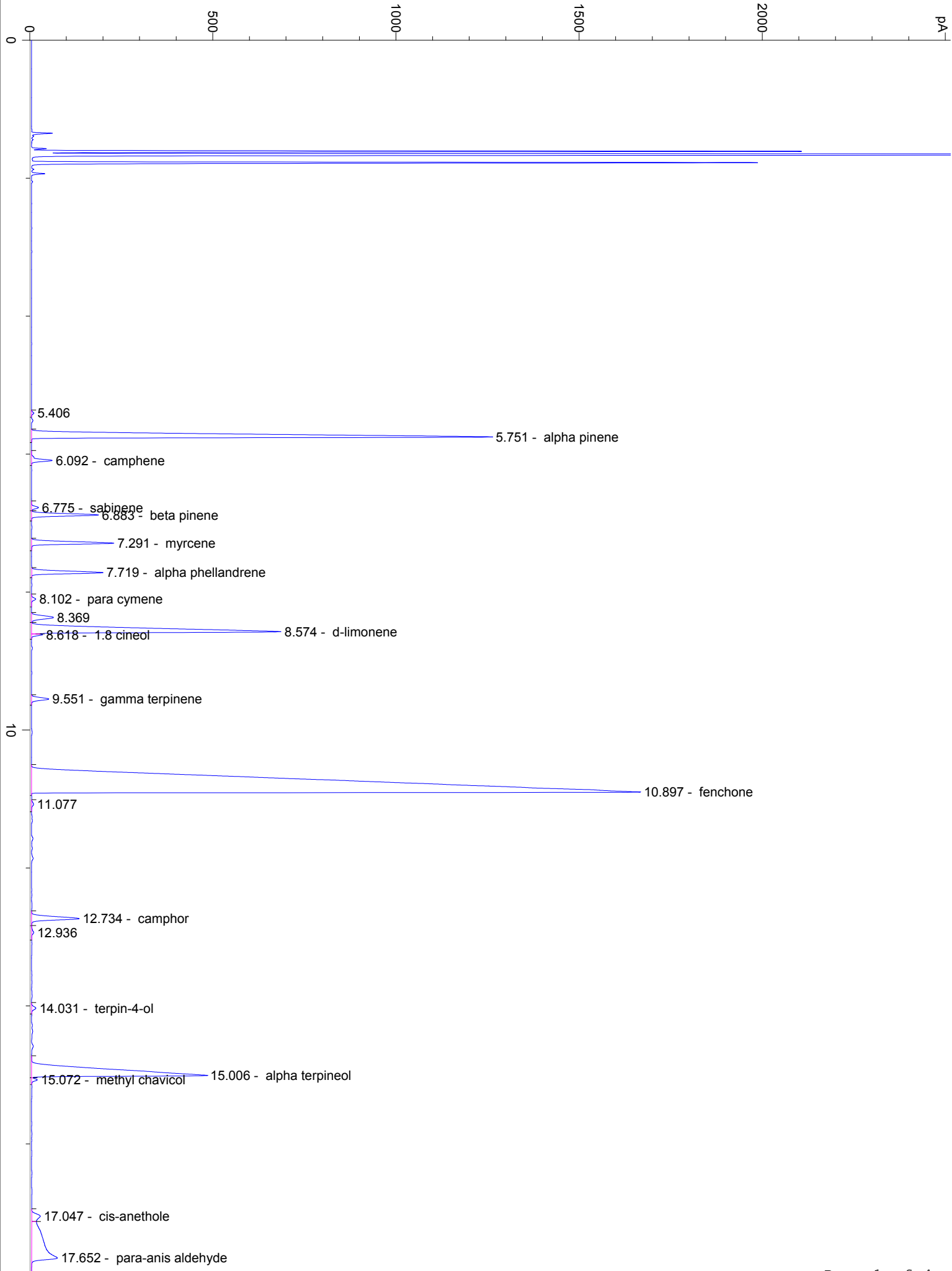


3503-072015

Instrument 6890

C:\HPCHEM\2\DATA\2016\  
35030002.DFennel, Sweet  
3503-072015  
Hungary  
foeniculum dulce  
Sample: 0.22g  
Hexane: 0.11g  
Injection: 0.2uLHP-5 5% Phenyl Methyl Siloxane  
30.000m  
250.000um  
0.250um8/5/2016 11:42:06 AM  
8/5/2016 11:42:06 AM8/5/2016  
2:45:41 PM

#	Compound Name	Meas. Ret.	Amount	Response	Height	Area	Area %
1	alpha pinene	5.75	199.69	3921.84	1257.75	3921.84	3.51
2	camphene	6.09	308.13	139.02	56.68	139.02	0.12
3	sabinene	6.77	0.93	47.51	19.08	47.51	0.04
4	beta pinene	6.88	11.57	443.24	182.76	443.24	0.40
5	myrcene	7.29	60.66	555.82	224.70	555.82	0.50
6	alpha phellandrene	7.72	50.77	496.30	194.54	496.30	0.44
7	para cymene	8.10	6.03	31.14	11.61	31.14	0.03
8	d-limonene	8.57	30.40	2626.05	681.11	2626.05	2.35
9	1.8 cineol	8.62	89.00	51.44	30.09	51.44	0.05
10	trans beta ocimene	0.00	0.00	0.00	0.00	0.00	0.00
11	gamma terpinene	9.55	124.04	131.71	47.16	131.71	0.12
12	fenchone	10.90	216.82	17894.11	1662.59	17894.11	16.00
13	camphor	12.73	446.08	424.98	130.16	424.98	0.38
14	terpin-4-ol	14.03	10.16	36.39	11.48	36.39	0.03
15	alpha terpineol	15.01	3003.02	2808.11	478.42	2808.11	2.51
16	methyl chavicol	15.07	191.25	38.35	15.70	38.35	0.03
17	cis-anethole	17.05	133.25	133.70	23.39	133.70	0.12
18	para-anis aldehyde	17.65	732.62	1175.49	70.45	1175.49	1.05
19	trans-anethole	19.38	217.81	76938.07	2458.86	76938.07	68.81





40

50

55.622

56.380

57.191  
57.382

69

68.110

70

min