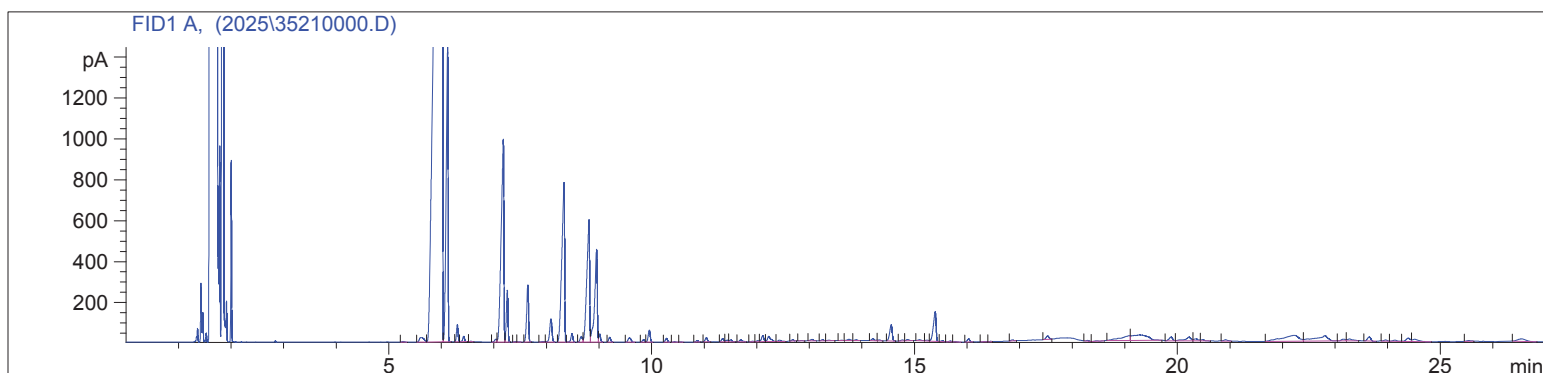


Frankincense Serrata Org
3521 BADB
India
Boswellia Serrata
Sample/Solvent: 0.05g/0.5g
Injection Amount: 0.2uL
20:1 Split Ratio

HP-5 5% Phenyl Methyl Siloxane
30.000m
250.000um
0.250um

1/21/2026 10:55:48 AM
1/21/2026 10:55:48 AM

1/21/2026
11:42:07 AM



#	Compound Name	Meas. Ret.	Amount	Response	Height	Area	Area %
1		5.27	0.00	11.28	3.32	11.28	0.02
2		5.61	0.00	130.41	21.64	130.41	0.22
3	Alpha Thujene	6.02	0.00	37395.15	4395.68	37395.15	63.85
4	Alpha Pinene	6.12	0.00	3705.51	1447.53	3705.51	6.33
5	Camphene	6.30	0.00	168.41	82.55	168.41	0.29
6		6.42	0.00	60.98	26.64	60.98	0.10
7		6.56	0.00	5.77	2.83	5.77	0.01
8		7.03	0.00	42.82	14.28	42.82	0.07
9	Sabinene	7.18	0.00	3517.73	989.55	3517.73	6.01
10	Beta Pinene	7.25	0.00	543.54	252.19	543.54	0.93
11		7.40	0.00	5.57	2.14	5.57	0.01
12		7.47	0.00	4.69	1.64	4.69	0.01
13	Myrcene	7.64	0.00	697.87	277.05	697.87	1.19
14		7.94	0.00	13.60	3.36	13.60	0.02
15	Alpha Phellandrene	8.08	0.00	339.14	112.60	339.14	0.58
16	Delta-3-Carene	8.33	0.00	2879.27	777.82	2879.27	4.92
17	Alpha Terpinene	8.48	0.00	106.60	41.30	106.60	0.18
18		8.66	0.00	83.26	27.17	83.26	0.14
19	Para Cymene	8.81	0.00	2202.18	597.72	2202.18	3.76
20	d-Limonene	8.95	0.00	1568.57	451.65	1568.57	2.68
21	1.8 Cineol	9.01	0.00	87.08	39.46	87.08	0.15
22	Cis-beta Ocimene	9.20	0.00	62.52	23.83	62.52	0.11
23	Trans-Beta Ocimene	9.57	0.00	78.87	20.35	78.87	0.13
24		9.84	0.00	33.09	12.11	33.09	0.06
25	Gamma Terpinene	9.95	0.00	154.97	58.33	154.97	0.26
26		10.28	0.00	50.95	18.47	50.95	0.09
27		10.43	0.00	5.88	2.19	5.88	0.01
28		10.55	0.00	3.19	1.21	3.19	0.01
29		10.86	0.00	18.11	7.20	18.11	0.03
30	Terpinolene	11.04	0.00	62.32	21.03	62.32	0.11
31		11.35	0.00	50.00	16.92	50.00	0.09
32		11.43	0.00	31.25	8.93	31.25	0.05
33		11.50	0.00	34.26	10.51	34.26	0.06
34	Cis-Thujone	11.69	0.00	35.91	9.37	35.91	0.06
35		11.91	0.00	10.45	3.10	10.45	0.02
36		12.02	0.00	17.23	5.39	17.23	0.03
37		12.11	0.00	87.14	28.75	87.14	0.15
38	Trans-Thujone	12.22	0.00	111.79	25.69	111.79	0.19
39		12.43	0.00	22.16	6.21	22.16	0.04
40		12.68	0.00	21.06	7.01	21.06	0.04

3521 - BADB

Instrument 6890

C:\HPCHEM\2\DATA\2025\
35210000.DFrankincense Serrata Org
3521 BADB
India
Boswellia Serrata
Sample/Solvent: 0.05g/0.5g
Injection Amount: 0.2uL
20:1 Split RatioHP-5 5% Phenyl Methyl Siloxane
30.000m
250.000um
0.250um1/21/2026 10:55:48 AM
1/21/2026 10:55:48 AM1/21/2026
11:42:07 AM

#	Compound Name	Meas. Ret.	Amount	Response	Height	Area	Area %
41		12.84	0.00	6.52	2.09	6.52	0.01
42		13.05	0.00	26.23	6.87	26.23	0.04
43		13.25	0.00	15.15	5.30	15.15	0.03
44		13.37	0.00	10.04	2.59	10.04	0.02
45		13.61	0.00	5.67	1.78	5.67	0.01
46		13.75	0.00	27.95	5.83	27.95	0.05
47		13.89	0.00	13.00	4.46	13.00	0.02
48		14.21	0.00	39.50	9.76	39.50	0.07
49		14.33	0.00	15.26	4.56	15.26	0.03
50	Terpin-4-ol	14.55	0.00	265.57	78.38	265.57	0.45
51		14.76	0.00	18.19	5.10	18.19	0.03
52		14.87	0.00	24.99	6.20	24.99	0.04
53	Alpha Terpineol	15.09	0.00	23.64	5.01	23.64	0.04
54		15.23	0.00	17.39	4.28	17.39	0.03
55	Methyl Chavicol	15.39	0.00	522.10	144.50	522.10	0.89
56		15.52	0.00	14.52	5.11	14.52	0.02
57		15.67	0.00	13.20	4.34	13.20	0.02
58		15.77	0.00	5.53	1.77	5.53	0.01
59		16.02	0.00	46.37	14.59	46.37	0.08
60		16.34	0.00	7.20	1.61	7.20	0.01
61		16.44	0.00	5.80	2.22	5.80	0.01
62		16.86	0.00	15.21	5.13	15.21	0.03
63		17.53	0.00	70.00	17.68	70.00	0.12
64		18.28	0.00	12.36	3.91	12.36	0.02
65		18.46	0.00	3.57	1.88	3.57	0.01
66		19.08	0.00	293.67	22.63	293.67	0.50
67		19.29	0.00	532.85	26.71	532.85	0.91
68		19.88	0.00	85.91	19.09	85.91	0.15
69		20.22	0.00	158.22	19.16	158.22	0.27
70		20.35	0.00	59.29	10.26	59.29	0.10
71		20.48	0.00	25.00	6.29	25.00	0.04
72		20.91	0.00	35.53	6.62	35.53	0.06
73	Beta Bourbonene	22.21	0.00	649.76	28.93	649.76	1.11
74		22.80	0.00	447.67	26.78	447.67	0.76
75		23.15	0.00	48.22	8.42	48.22	0.08
76		23.27	0.00	64.93	9.27	64.93	0.11
77		23.64	0.00	86.95	20.27	86.95	0.15
78		23.96	0.00	25.30	5.69	25.30	0.04
79		24.13	0.00	31.09	5.65	31.09	0.05
80	Beta Caryophyllene	24.39	0.00	92.85	16.67	92.85	0.16
81		24.51	0.00	90.04	11.27	90.04	0.15
82		25.53	0.00	21.42	3.72	21.42	0.04
83		26.55	0.00	136.07	12.10	136.07	0.23

