

Frankincense CO2

HP-5 5% Phenyl Methyl Siloxane

3524-DDABU

30.000m

Somalia

250.000um

boswellia carteri

0.250um

Sample/CH2CL2: 0.12g/0.40g

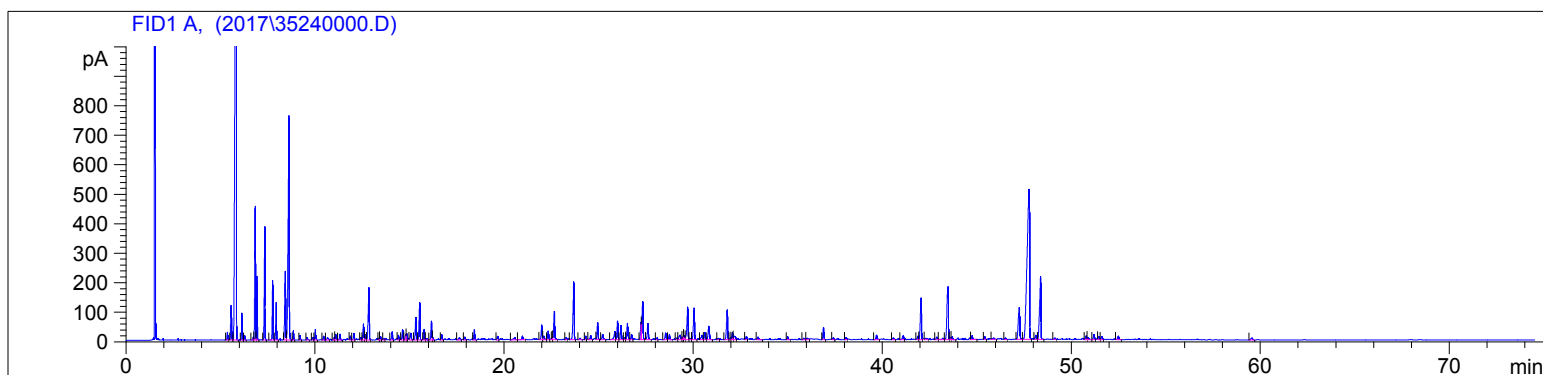
Injection: 0.2uL

4/13/2017 11:00:39 AM

5/30/2017

4/13/2017 11:00:39 AM

3:35:24 PM



#	Compound Name	Meas. Ret.	Amount	Response	Height	Area	Area %
1		5.36	100.00	69.97	26.22	69.97	0.19
2	alpha thujene	5.55	100.00	404.51	117.05	404.51	1.08
3	alpha pinene	5.83	100.00	10062.17	2219.62	10062.17	26.79
4	camphene	6.13	100.00	201.47	91.72	201.47	0.54
5		6.27	100.00	35.91	14.75	35.91	0.10
6		6.73	100.00	27.73	9.98	27.73	0.07
7	sabinene	6.83	100.00	1214.45	453.24	1214.45	3.23
8	beta pinene	6.92	100.00	493.44	215.79	493.44	1.31
9	myrcene	7.34	100.00	999.34	384.40	999.34	2.66
10	alpha phellandrene	7.75	100.00	521.30	201.25	521.30	1.39
11	delta-3 carene	7.94	100.00	337.11	126.57	337.11	0.90
12	alpha terpinene	0.00	0.00	0.00	0.00	0.00	0.00
13	para cymene	8.42	100.00	800.09	233.17	800.09	2.13
14	d-limonene	8.62	100.00	3140.26	760.67	3140.26	8.36
15	1.8 cineol	0.00	0.00	0.00	0.00	0.00	0.00
16	cis beta ocimene	8.85	100.00	76.21	31.10	76.21	0.20
17	trans beta ocimene	9.20	100.00	40.35	15.58	40.35	0.11
18	gamma terpinene	9.58	100.00	26.86	8.96	26.86	0.07
19		9.87	100.00	22.59	8.03	22.59	0.06
20		10.01	100.00	103.34	35.05	103.34	0.28
21		10.44	100.00	38.69	13.23	38.69	0.10
22	terpinolene	10.65	100.00	40.84	7.82	40.84	0.11
23		11.01	100.00	27.84	9.00	27.84	0.07
24	tetrahydrol linalool	11.09	100.00	66.55	18.08	66.55	0.18
25	cis-thujone	11.31	100.00	66.81	19.90	66.81	0.18
26	trans-thujone	0.00	0.00	0.00	0.00	0.00	0.00
27		11.85	100.00	49.58	13.03	49.58	0.13
28		12.05	100.00	75.91	22.72	75.91	0.20
29		12.41	100.00	31.10	8.47	31.10	0.08
30		12.66	100.00	67.66	17.96	67.66	0.18
31	trans-verbenol	12.85	100.00	699.92	178.39	699.92	1.86
32		13.38	100.00	22.31	6.93	22.31	0.06
33		13.46	100.00	36.93	11.50	36.93	0.10
34		13.66	100.00	25.63	5.39	25.63	0.07
35	terpin-4-ol	14.07	100.00	95.73	27.36	95.73	0.25
36		14.40	100.00	58.50	15.81	58.50	0.16
37		14.62	100.00	120.44	34.75	120.44	0.32

Frankincense CO2

HP-5 5% Phenyl Methyl Siloxane

3524-DDABU

30.000m

Somalia

250.000um

boswellia carteri

0.250um

Sample/CH2CL2: 0.12g/0.40g

Injection: 0.2uL

4/13/2017 11:00:39 AM

5/30/2017

4/13/2017 11:00:39 AM

3:35:24 PM

#	Compound Name	Meas. Ret.	Amount	Response	Height	Area	Area %
38		14.79	100.00	62.24	17.50	62.24	0.17
39	methyl chavicol	14.85	100.00	73.28	20.65	73.28	0.20
40		15.06	100.00	93.87	23.20	93.87	0.25
41	verbenone	15.33	100.00	265.59	76.27	265.59	0.71
42	octyl acetate	15.53	100.00	421.96	126.06	421.96	1.12
43		15.77	100.00	110.76	36.16	110.76	0.29
44		15.90	100.00	20.95	5.51	20.95	0.06
45		16.15	100.00	204.86	64.04	204.86	0.55
46		16.22	100.00	23.24	8.35	23.24	0.06
47		16.70	100.00	59.83	16.78	59.83	0.16
48		17.62	100.00	42.96	7.08	42.96	0.11
49		17.92	100.00	37.25	9.07	37.25	0.10
50		18.42	100.00	111.17	33.72	111.17	0.30
51		19.65	100.00	50.28	12.00	50.28	0.13
52		20.56	100.00	46.54	6.60	46.54	0.12
53		20.96	100.00	54.83	12.55	54.83	0.15
54	alpha copaene	21.99	100.00	180.02	50.24	180.02	0.48
55		22.09	100.00	59.51	12.59	59.51	0.16
56		22.33	100.00	120.11	29.16	120.11	0.32
57		22.55	100.00	24.47	7.33	24.47	0.07
58	beta elemene	22.65	100.00	355.97	95.83	355.97	0.95
59		23.28	100.00	29.94	8.20	29.94	0.08
60	beta caryophyllene	23.68	100.00	804.59	196.30	804.59	2.14
61		24.02	100.00	24.69	5.67	24.69	0.07
62		24.31	100.00	44.46	12.40	44.46	0.12
63		24.57	100.00	57.89	13.76	57.89	0.15
64	cis thujopsene	24.94	100.00	199.92	56.85	199.92	0.53
65	trans-beta farnesene	25.21	100.00	78.57	17.47	78.57	0.21
66	gamma gurjunene	25.85	100.00	136.08	28.16	136.08	0.36
67	gamma muurolene	26.00	100.00	231.64	62.82	231.64	0.62
68	germacrene D	26.18	100.00	176.57	47.98	176.57	0.47
69		26.38	100.00	29.34	7.27	29.34	0.08
70	beta selinene	26.52	100.00	229.95	55.28	229.95	0.61
71	cis-beta guaiene	26.74	100.00	68.69	17.53	68.69	0.18
72	epi-cubebol	27.24	100.00	206.28	59.58	206.28	0.55
73	cubebol	27.32	100.00	519.05	129.31	519.05	1.38
74	delta cadinene	27.60	100.00	226.21	54.78	226.21	0.60
75		28.08	100.00	24.92	6.64	24.92	0.07
76		28.54	100.00	95.52	22.79	95.52	0.25
77		28.73	100.00	65.45	16.64	65.45	0.17
78		29.13	100.00	31.33	6.32	31.33	0.08
79		29.30	100.00	109.67	16.34	109.67	0.29
80		29.47	100.00	46.68	11.96	46.68	0.12
81		29.52	100.00	52.92	14.11	52.92	0.14
82	caryophyllene alcohol	29.70	100.00	485.30	110.60	485.30	1.29
83		29.86	100.00	26.84	5.05	26.84	0.07
84	caryophyllene oxide	30.05	100.00	458.11	107.94	458.11	1.22
85		30.47	100.00	80.43	15.60	80.43	0.21
86		30.62	100.00	89.64	24.03	89.64	0.24
87		30.82	100.00	231.24	46.13	231.24	0.62
88		31.32	100.00	27.81	5.22	27.81	0.07
89		31.80	100.00	426.08	100.80	426.08	1.13
90		31.96	100.00	22.49	6.12	22.49	0.06
91		32.07	100.00	96.32	23.30	96.32	0.26
92		32.17	100.00	81.14	12.50	81.14	0.22

Frankincense CO2

HP-5 5% Phenyl Methyl Siloxane

3524-DDABU

30.000m

Somalia

250.000um

boswellia carteri

0.250um

Sample/CH2CL2: 0.12g/0.40g

Injection: 0.2uL

4/13/2017 11:00:39 AM

5/30/2017

4/13/2017 11:00:39 AM

3:35:24 PM

#	Compound Name	Meas. Ret.	Amount	Response	Height	Area	Area %
93		32.81	100.00	53.18	11.49	53.18	0.14
94		33.43	100.00	42.73	8.79	42.73	0.11
95		34.99	100.00	42.31	9.83	42.31	0.11
96		35.85	100.00	25.20	5.22	25.20	0.07
97		36.03	100.00	41.08	5.27	41.08	0.11
98		36.89	100.00	148.13	41.36	148.13	0.39
99		37.40	100.00	27.70	7.14	27.70	0.07
100		38.08	100.00	28.70	7.84	28.70	0.08
101		39.69	100.00	73.26	15.76	73.26	0.20
102		40.57	100.00	34.34	6.37	34.34	0.09
103		41.10	100.00	65.58	13.48	65.58	0.17
104		41.88	100.00	48.90	11.84	48.90	0.13
105	cembrene	42.05	100.00	577.52	140.51	577.52	1.54
106		42.29	100.00	37.57	5.07	37.57	0.10
107		42.88	100.00	41.63	8.46	41.63	0.11
108		43.21	100.00	32.70	5.01	32.70	0.09
109	cembrenol	43.47	100.00	950.34	179.29	950.34	2.53
110		43.60	100.00	28.23	7.16	28.23	0.08
111		43.69	100.00	35.38	9.20	35.38	0.09
112		44.75	100.00	56.85	13.02	56.85	0.15
113		45.42	100.00	32.14	8.90	32.14	0.09
114		45.89	100.00	38.55	5.17	38.55	0.10
115		46.51	100.00	23.22	5.33	23.22	0.06
116	incensole	47.24	100.00	619.26	107.02	619.26	1.65
117	incensyl acetate	47.76	100.00	4751.61	507.46	4751.61	12.65
118		48.12	100.00	59.47	13.78	59.47	0.16
119		48.37	100.00	1057.36	211.54	1057.36	2.81
120		49.12	100.00	22.31	5.28	22.31	0.06
121		50.78	100.00	51.81	12.59	51.81	0.14
122		50.88	100.00	35.43	6.55	35.43	0.09
123		51.19	100.00	70.42	17.04	70.42	0.19
124		51.46	100.00	46.05	10.34	46.05	0.12
125		51.61	100.00	47.44	9.77	47.44	0.13
126		52.48	100.00	55.84	12.12	55.84	0.15
127		59.55	100.00	38.18	6.34	38.18	0.10

