

3861 JBGL

Instrument 6890

C:\HPCHEM\2\DATA\2026\
38610000.D

Cornmint Org

HP-5 5% Phenyl Methyl Siloxane

3861 JBGL

30.000m

Mentha Arvensis

250.000um

India

0.250um

Sample/Solvent: 0.06g /0.5g

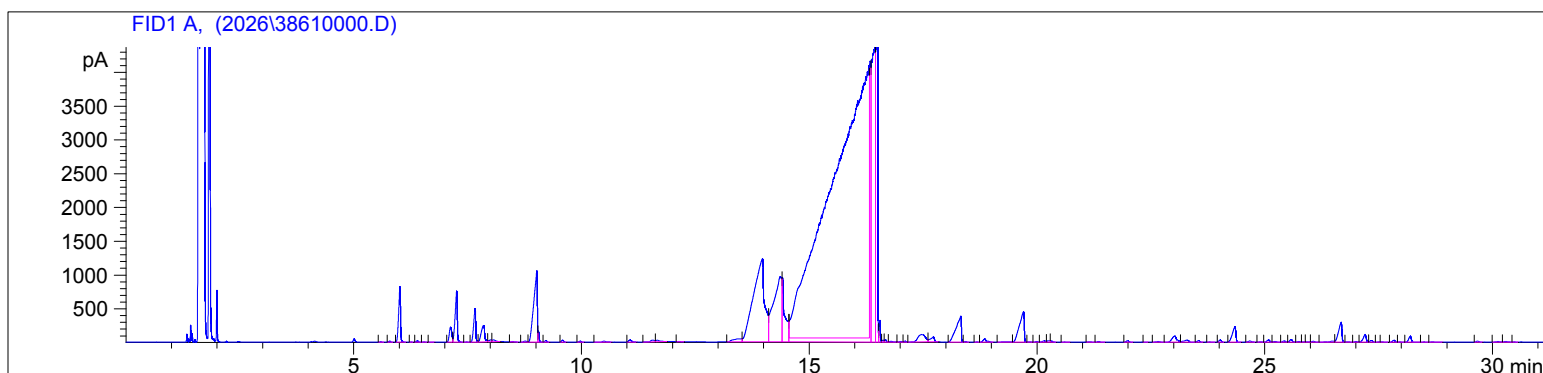
Injection Amount: 0.2uL

4/1/2026 12:00:55 PM

4/1/2026

4/1/2026 12:00:55 PM

1:13:29 PM



#	Compound Name	Meas. Ret.	Amount	Response	Height	Area	Area %
1	Alpha Tricyclene	5.59	0.00	23.87	9.11	23.87	0.01
2	Alpha Thujene	5.78	0.00	43.53	15.06	43.53	0.01
3	Alpha Pinene	6.01	0.00	2384.68	825.03	2384.68	0.68
4		6.26	0.00	8.06	3.30	8.06	0.00
5	Camphene	6.39	0.00	60.93	20.72	60.93	0.02
6		6.54	0.00	20.24	6.90	20.24	0.01
7		6.69	0.00	8.76	2.21	8.76	0.00
8	Sabinene	7.12	0.00	847.66	222.55	847.66	0.24
9	Beta Pinene	7.26	0.00	2523.94	756.03	2523.94	0.72
10		7.47	0.00	16.74	4.04	16.74	0.00
11	Myrcene	7.66	0.00	1549.34	496.54	1549.34	0.44
12	3-Octanol	7.85	0.00	1290.59	245.69	1290.59	0.37
13		8.00	0.00	122.71	28.54	122.71	0.03
14		8.06	0.00	141.12	26.65	141.12	0.04
15		8.48	0.00	32.26	8.26	32.26	0.01
16	Para Cymene	8.75	0.00	70.87	14.30	70.87	0.02
17	d-Limonene	9.02	0.00	5762.15	1056.66	5762.15	1.64
18	1.8 Cineol	9.05	0.00	265.05	162.87	265.05	0.08
19		9.22	0.00	72.90	26.07	72.90	0.02
20	Gamma Terpinene	9.58	0.00	92.36	30.94	92.36	0.03
21		9.97	0.00	54.39	16.55	54.39	0.02
22	Terpinolene	10.49	0.00	82.59	14.22	82.59	0.02
23		11.07	0.00	146.01	33.07	146.01	0.04
24		11.56	0.00	133.66	25.58	133.66	0.04
25		11.66	0.00	128.51	21.64	128.51	0.04
26		12.15	0.00	7.95	2.05	7.95	0.00
27	menth-2-en-1-ol<Trans-para>	13.45	0.00	580.86	46.07	580.86	0.17
28	Menthone	13.98	0.00	21160.63	1230.17	21160.63	6.03
29	Menthofuran	14.36	0.00	11853.71	962.85	11853.71	3.38
30		14.42	0.00	4338.36	946.17	4338.36	1.24
31	Menthol	16.31	0.00	225270.25	4034.42	2.25e5	64.21
32		16.34	0.00	14494.17	4147.09	14494.17	4.13
33		16.44	0.00	26061.32	4373.17	26061.32	7.43
34		16.50	0.00	15156.97	4428.60	15156.97	4.32
35		16.55	0.00	652.70	315.00	652.70	0.19
36		16.62	0.00	64.34	27.83	64.34	0.02
37		16.68	0.00	103.60	35.34	103.60	0.03
38		16.80	0.00	96.03	11.69	96.03	0.03
39		17.01	0.00	52.95	11.02	52.95	0.02
40		17.10	0.00	45.11	15.52	45.11	0.01

3861 JBGL

Instrument 6890

C:\HPCHEM\2\DATA\2026\
38610000.D

Cornmint Org

HP-5 5% Phenyl Methyl Siloxane

3861 JBGL

30.000m

Mentha Arvensis

250.000um

India

0.250um

Sample/Solvent: 0.06g /0.5g

Injection Amount: 0.2uL

4/1/2026 12:00:55 PM

4/1/2026

4/1/2026 12:00:55 PM

1:13:29 PM

#	Compound Name	Meas. Ret.	Amount	Response	Height	Area	Area %
41	Pulegone	17.46	0.00	1269.00	110.98	1269.00	0.36
42		17.73	0.00	466.44	72.70	466.44	0.13
43	Piperitone	18.33	0.00	3054.30	384.64	3054.30	0.87
44		18.44	0.00	30.95	10.85	30.95	0.01
45		18.68	0.00	13.49	3.03	13.49	0.00
46		18.85	0.00	252.96	47.18	252.96	0.07
47		19.28	0.00	72.44	5.04	72.44	0.02
48	Menthyl Acetate	19.71	0.00	3264.55	445.51	3264.55	0.93
49		19.85	0.00	23.94	5.60	23.94	0.01
50		19.99	0.00	39.05	10.65	39.05	0.01
51		20.16	0.00	95.63	20.28	95.63	0.03
52		20.26	0.00	83.72	21.43	83.72	0.02
53		20.31	0.00	67.21	18.30	67.21	0.02
54		20.61	0.00	11.82	2.91	11.82	0.00
55		21.16	0.00	32.73	4.53	32.73	0.01
56		21.35	0.00	46.04	11.65	46.04	0.01
57		21.99	0.00	84.41	20.34	84.41	0.02
58		22.36	0.00	6.45	1.91	6.45	0.00
59		22.66	0.00	54.69	8.00	54.69	0.02
60	Beta Bourbonene	23.03	0.00	641.55	89.41	641.55	0.18
61		23.29	0.00	240.64	30.83	240.64	0.07
62		23.55	0.00	86.32	22.22	86.32	0.02
63		23.79	0.00	13.46	2.57	13.46	0.00
64		24.02	0.00	114.15	33.47	114.15	0.03
65	Beta Caryophyllene	24.35	0.00	1204.64	229.61	1204.64	0.34
66		24.67	0.00	81.11	17.09	81.11	0.02
67		24.91	0.00	24.31	5.51	24.31	0.01
68		25.08	0.00	132.49	31.55	132.49	0.04
69		25.23	0.00	49.70	10.60	49.70	0.01
70		25.43	0.00	73.21	18.36	73.21	0.02
71		25.58	0.00	157.17	37.58	157.17	0.04
72		25.75	0.00	46.26	10.88	46.26	0.01
73		25.84	0.00	25.41	6.02	25.41	0.01
74		25.95	0.00	32.75	6.97	32.75	0.01
75		26.07	0.00	55.69	13.04	55.69	0.02
76		26.49	0.00	109.03	16.57	109.03	0.03
77		26.68	0.00	1506.32	296.51	1506.32	0.43
78		26.82	0.00	28.95	4.67	28.95	0.01
79		27.00	0.00	42.78	9.94	42.78	0.01
80		27.21	0.00	512.74	114.03	512.74	0.15
81		27.34	0.00	98.83	25.30	98.83	0.03
82		27.50	0.00	13.32	3.42	13.32	0.00
83		27.58	0.00	24.63	4.47	24.63	0.01
84		27.84	0.00	109.62	27.35	109.62	0.03
85		27.96	0.00	20.19	3.72	20.19	0.01
86		28.20	0.00	352.48	89.51	352.48	0.10
87		28.49	0.00	15.33	3.67	15.33	0.00
88		28.68	0.00	31.99	7.59	31.99	0.01
89		29.67	0.00	61.11	14.62	61.11	0.02
90		30.12	0.00	57.25	8.76	57.25	0.02
91		30.29	0.00	65.29	9.69	65.29	0.02
92		30.48	0.00	10.95	2.78	10.95	0.00

