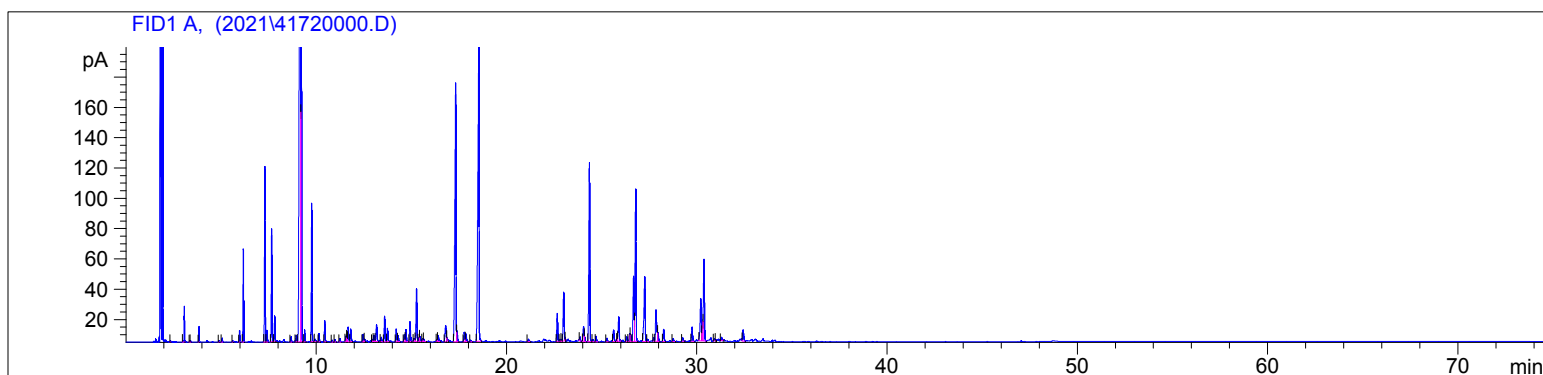


4172-EBEK

Instrument 6890

C:\HPCHEM\2\DATA\2021\
41720000.DLemon Verbena
4172-EBEK
France
Aloysia citrodoraHP-5 5% Phenyl Methyl Siloxane
30.000m
250.000um
0.250umSample Ratio: 0.06g/0.50g
Injection Amount: 0.2uL
20:1 Split Ratio

->

5/26/2021 10:28:47 AM
5/26/2021 10:28:47 AM5/28/2021
1:55:32 PM

#	Compound Name	Meas. Ret.	Amount	Response	Height	Area	Area %
1		2.34	100.00	0.88	0.72	0.88	0.01
2		3.06	100.00	34.23	23.59	34.23	0.42
3		3.35	100.00	1.37	0.91	1.37	0.02
4		3.39	100.00	1.05	0.73	1.05	0.01
5		3.83	100.00	17.22	10.32	17.22	0.21
6		4.89	100.00	2.11	1.03	2.11	0.03
7		5.05	100.00	5.44	2.60	5.44	0.07
8		5.60	100.00	1.93	0.84	1.93	0.02
9	alpha thujene	5.96	100.00	16.42	7.58	16.42	0.20
10	alpha pinene	6.16	100.00	139.60	61.32	139.60	1.69
11	beta pinene	7.29	100.00	281.80	115.60	281.80	3.42
12		7.40	100.00	22.14	7.77	22.14	0.27
13	myrcene	7.65	100.00	184.27	74.48	184.27	2.23
14		7.81	100.00	41.26	16.87	41.26	0.50
15		8.67	100.00	9.69	3.45	9.69	0.12
16	para cymene	8.94	100.00	13.01	4.11	13.01	0.16
17	d-limonene	9.16	100.00	2130.54	504.95	2130.54	25.83
18	1.8 cineol	9.21	100.00	609.81	262.75	609.81	7.39
19	cis-beta ocimene	9.39	100.00	20.47	7.81	20.47	0.25
20	trans-beta ocimene	9.77	100.00	239.49	90.72	239.49	2.90
21		9.95	100.00	4.68	1.47	4.68	0.06
22		10.15	100.00	14.92	5.60	14.92	0.18
23		10.46	100.00	39.46	13.88	39.46	0.48
24		10.84	100.00	3.42	1.16	3.42	0.04
25		10.99	100.00	4.60	1.51	4.60	0.06
26	terpinolene	11.25	100.00	7.52	2.16	7.52	0.09
27	alpha pinene oxide	11.57	100.00	10.11	3.71	10.11	0.12
28	trans sabinene hydrate	11.62	100.00	8.26	3.02	8.26	0.10
29	linalool	11.69	100.00	32.40	9.58	32.40	0.39
30		11.82	100.00	27.84	8.20	27.84	0.34
31		12.47	100.00	15.50	4.85	15.50	0.19
32		12.55	100.00	4.42	1.50	4.42	0.05
33	cis limonene oxide	12.96	100.00	4.45	1.56	4.45	0.05
34		13.04	100.00	13.28	4.03	13.28	0.16

4172-EBEK

Instrument 6890

C:\HPCHEM\2\DATA\2021\
41720000.D

Lemon Verbena

HP-5 5% Phenyl Methyl Siloxane

4172-EBEK

30.000m

France

250.000um

Aloysia citrodora

0.250um

Sample Ratio: 0.06g/0.50g

Injection Amount: 0.2uL

20:1 Split Ratio

->

5/26/2021 10:28:47 AM

5/28/2021

5/26/2021 10:28:47 AM

1:55:32 PM

#	Compound Name	Meas. Ret.	Amount	Response	Height	Area	Area %
35	trans para mentha-2-en-1-ol	13.18	100.00	44.41	10.87	44.41	0.54
36	trans verbenol	13.43	100.00	9.20	2.85	9.20	0.11
37		13.60	100.00	52.44	16.90	52.44	0.64
38	citronellal	13.75	100.00	28.19	8.88	28.19	0.34
39		14.21	100.00	26.28	8.43	26.28	0.32
40		14.31	100.00	13.44	3.89	13.44	0.16
41		14.64	100.00	13.97	4.38	13.97	0.17
42	terpin-4-ol	14.73	100.00	26.42	7.89	26.42	0.32
43		14.94	100.00	41.96	13.12	41.96	0.51
44		15.15	100.00	6.53	1.95	6.53	0.08
45		15.28	100.00	116.35	34.62	116.35	1.41
46		15.43	100.00	7.24	2.59	7.24	0.09
47		15.45	100.00	12.87	3.30	12.87	0.16
48	myrtenol	15.60	100.00	5.28	1.66	5.28	0.06
49		15.66	100.00	4.92	1.55	4.92	0.06
50		16.35	100.00	3.91	1.41	3.91	0.05
51	trans carveol	16.42	100.00	16.02	3.97	16.02	0.19
52	nerol	16.81	100.00	43.11	10.36	43.11	0.52
53	cis carveol	16.86	100.00	5.40	2.32	5.40	0.07
54	neral	17.34	100.00	712.24	170.46	712.24	8.64
55		17.40	100.00	20.31	7.08	20.31	0.25
56		17.79	100.00	20.28	6.22	20.28	0.25
57	geraniol	17.87	100.00	19.66	5.18	19.66	0.24
58		18.12	100.00	2.82	1.04	2.82	0.03
59	geranial	18.56	100.00	892.81	199.71	892.81	10.82
60		21.16	100.00	5.89	1.64	5.89	0.07
61	neryl acetate	22.68	100.00	63.01	18.52	63.01	0.76
62		22.82	100.00	4.10	1.38	4.10	0.05
63		22.89	100.00	3.77	1.29	3.77	0.05
64		23.01	100.00	114.63	32.28	114.63	1.39
65		23.08	100.00	2.31	1.14	2.31	0.03
66		23.87	100.00	8.93	2.62	8.93	0.11
67		24.05	100.00	34.04	9.68	34.04	0.41
68		24.10	100.00	8.89	3.74	8.89	0.11
69	beta caryophyllene	24.37	100.00	431.25	117.67	431.25	5.23
70		24.55	100.00	4.65	1.47	4.65	0.06
71		24.72	100.00	11.95	3.59	11.95	0.14
72		25.29	100.00	8.69	2.29	8.69	0.11
73	alpha humulene	25.63	100.00	28.40	7.53	28.40	0.34
74		25.84	100.00	4.11	1.79	4.11	0.05
75	beta farnesene	25.91	100.00	60.01	16.01	60.01	0.73
76	beta acoradiene	26.32	100.00	10.93	3.15	10.93	0.13
77		26.49	100.00	16.44	5.24	16.44	0.20
78		26.50	100.00	14.12	4.58	14.12	0.17
79	gamma muurolene	26.69	100.00	158.99	42.90	158.99	1.93
80	germacrene D	26.80	100.00	359.19	100.15	359.19	4.35
81		27.27	100.00	185.26	42.60	185.26	2.25
82	alpha zingiberene	27.42	100.00	5.66	1.64	5.66	0.07
83		27.75	100.00	6.33	2.19	6.33	0.08
84	beta bisabolene	27.87	100.00	87.17	20.75	87.17	1.06
85		27.94	100.00	21.39	5.83	21.39	0.26
86		28.27	100.00	30.57	8.16	30.57	0.37
87	gamma cadinene	28.77	100.00	6.21	1.89	6.21	0.08
88		29.27	100.00	8.61	2.28	8.61	0.10
89		29.76	100.00	32.76	9.29	32.76	0.40

4172-EBEK

Instrument 6890

C:\HPCHEM\2\DATA\2021\
41720000.D

Lemon Verbena

HP-5 5% Phenyl Methyl Siloxane

4172-EBEK

30.000m

France

250.000um

Aloysia citrodora

0.250um

Sample Ratio: 0.06g/0.50g

Injection Amount: 0.2uL

20:1 Split Ratio

->

5/26/2021 10:28:47 AM

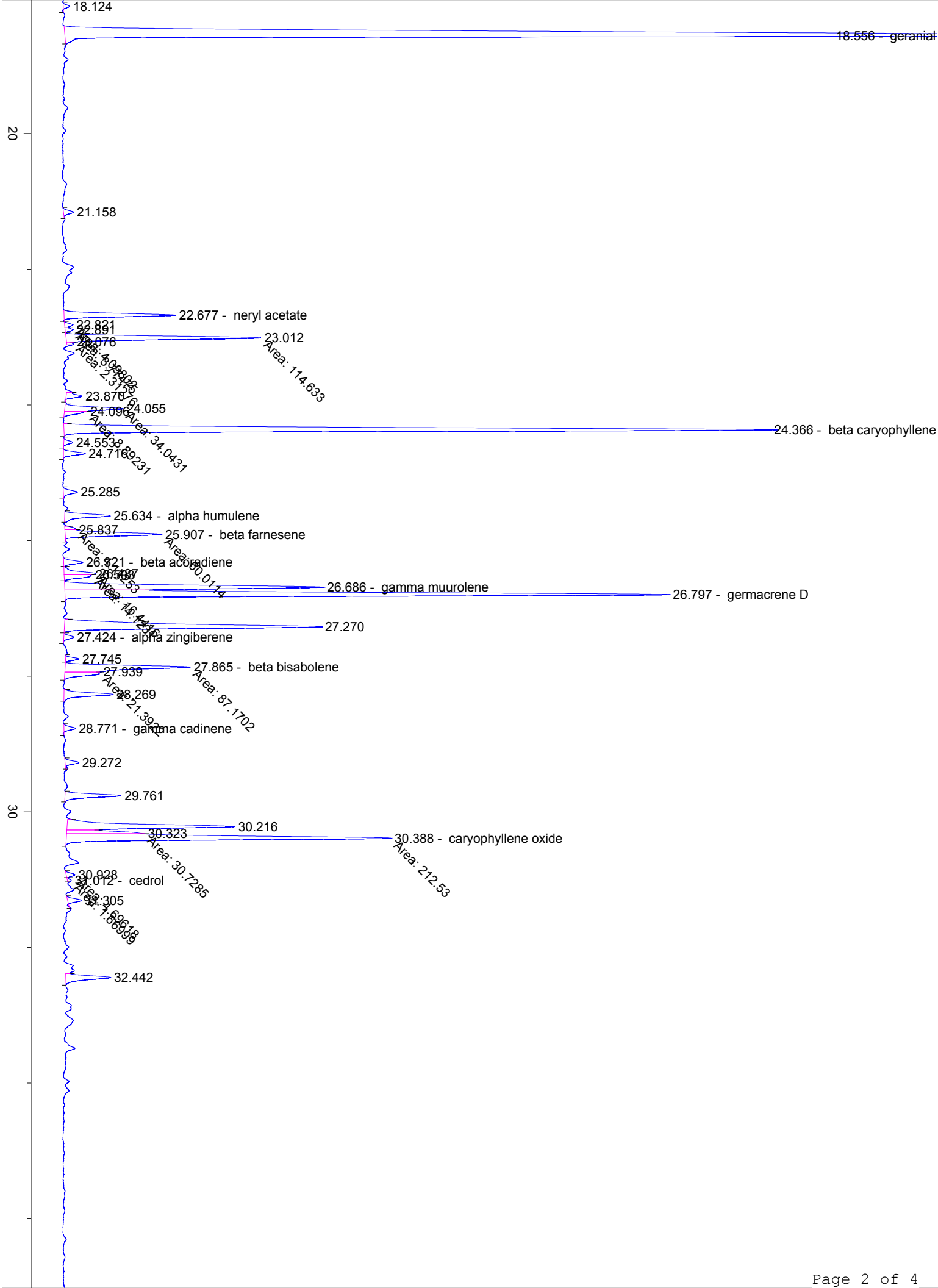
5/28/2021

5/26/2021 10:28:47 AM

1:55:32 PM

#	Compound Name	Meas. Ret.	Amount	Response	Height	Area	Area %
90		30.22	100.00	113.04	27.79	113.04	1.37
91		30.32	100.00	30.73	12.90	30.73	0.37
92	caryophyllene oxide	30.39	100.00	212.53	53.82	212.53	2.58
93		30.93	100.00	4.70	1.47	4.70	0.06
94	cedrol	31.01	100.00	1.67	0.62	1.67	0.02
95		31.31	100.00	7.70	2.23	7.70	0.09
96		32.44	100.00	29.91	7.41	29.91	0.36





40

50

