

Lavandin Grosso Org

HP-5 5% Phenyl Methyl Siloxane

4210 AADD

30.000m

Lavandula Intermedia Grosso

250.000um

Spain

0.250um

Sample/Solvent: 0.05g /0.51g

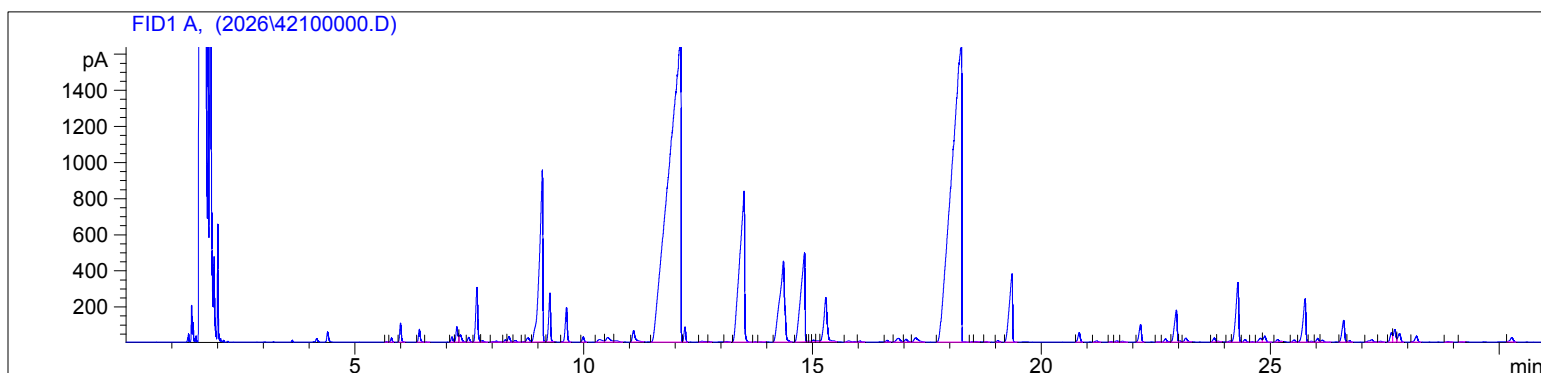
Injection Amount: 0.2uL

4/17/2026 12:27:59 PM

4/17/2026

4/17/2026 12:27:59 PM

1:19:11 PM



#	Compound Name	Meas. Ret.	Amount	Response	Height	Area	Area %
1		5.69	0.00	8.62	3.71	8.62	0.01
2	Alpha Thujene	5.80	0.00	54.08	23.08	54.08	0.06
3	Alpha Pinene	6.00	0.00	254.81	104.48	254.81	0.29
4	Camphene	6.41	0.00	186.40	70.66	186.40	0.21
5		6.56	0.00	3.95	1.45	3.95	0.00
6	Sabinene	7.12	0.00	74.94	28.18	74.94	0.08
7	Beta Pinene	7.23	0.00	235.37	84.24	235.37	0.26
8		7.31	0.00	167.82	40.06	167.82	0.19
9		7.49	0.00	80.76	26.15	80.76	0.09
10	Myrcene	7.67	0.00	951.24	303.54	951.24	1.07
11		7.78	0.00	28.71	7.74	28.71	0.03
12		8.09	0.00	39.93	6.35	39.93	0.04
13		8.29	0.00	35.91	13.05	35.91	0.04
14	Alpha Terpinene	8.37	0.00	104.68	30.14	104.68	0.12
15		8.51	0.00	30.22	9.06	30.22	0.03
16	Para Cymene	8.69	0.00	10.10	3.29	10.10	0.01
17	d-Limonene	8.78	0.00	102.64	23.47	102.64	0.12
18	1.8 Cineol	9.10	0.00	4890.73	952.15	4890.73	5.50
19	Cis Beta Ocimene	9.27	0.00	777.82	270.35	777.82	0.87
20	Trans Beta Ocimene	9.63	0.00	582.57	191.40	582.57	0.65
21		9.99	0.00	87.39	29.39	87.39	0.10
22		10.35	0.00	99.05	14.45	99.05	0.11
23	Cis-Linalool Oxide	10.53	0.00	166.00	25.23	166.00	0.19
24		10.70	0.00	48.74	7.69	48.74	0.05
25	Terpinolene	11.09	0.00	277.03	63.57	277.03	0.31
26	Linalool	12.12	0.00	31358.87	1670.67	31358.87	35.26
27		12.22	0.00	217.25	82.56	217.25	0.24
28		12.58	0.00	35.74	4.92	35.74	0.04
29		12.75	0.00	9.34	2.62	9.34	0.01
30		13.12	0.00	16.12	3.33	16.12	0.02
31	Camphor	13.51	0.00	6216.56	834.85	6216.56	6.99
32		13.75	0.00	8.16	2.76	8.16	0.01
33	Borneol	13.86	0.00	6.28	2.21	6.28	0.01
34	Lavandulol	14.37	0.00	3435.85	447.28	3435.85	3.86
35	Terpinen 4-ol	14.83	0.00	3163.71	493.80	3163.71	3.56
36		14.89	0.00	10.21	4.27	10.21	0.01
37		14.93	0.00	11.81	3.84	11.81	0.01
38		15.02	0.00	37.16	10.72	37.16	0.04
39		15.11	0.00	31.09	6.80	31.09	0.03
40	Alpha Terpineol	15.29	0.00	1233.39	245.30	1233.39	1.39

4210 AADD

Instrument 6890

C:\HPCHEM\2\DATA\2026\
42100000.D

Lavandin Grosso Org

HP-5 5% Phenyl Methyl Siloxane

4210 AADD

30.000m

Lavandula Intermedia Grosso

250.000um

Spain

0.250um

Sample/Solvent: 0.05g /0.51g

Injection Amount: 0.2uL

4/17/2026 12:27:59 PM

4/17/2026

4/17/2026 12:27:59 PM

1:19:11 PM

#	Compound Name	Meas. Ret.	Amount	Response	Height	Area	Area %
41		15.79	0.00	46.60	6.32	46.60	0.05
42		16.04	0.00	25.01	6.22	25.01	0.03
43		16.63	0.00	30.99	9.16	30.99	0.03
44	Nerol	16.88	0.00	119.12	20.15	119.12	0.13
45		17.04	0.00	65.95	15.18	65.95	0.07
46		17.26	0.00	152.16	23.16	152.16	0.17
47	Linalyl acetate	18.25	0.00	25384.25	1638.80	25384.25	28.54
48		18.49	0.00	8.25	3.14	8.25	0.01
49		18.55	0.00	11.85	2.98	11.85	0.01
50		18.79	0.00	6.77	2.78	6.77	0.01
51		19.05	0.00	28.52	8.85	28.52	0.03
52	Lavandulyl Acetate	19.35	0.00	1850.20	373.74	1850.20	2.08
53		20.82	0.00	178.24	52.27	178.24	0.20
54		21.20	0.00	25.86	6.43	25.86	0.03
55		21.52	0.00	13.31	3.84	13.31	0.01
56		21.64	0.00	30.95	7.79	30.95	0.03
57		21.77	0.00	22.52	5.25	22.52	0.03
58	Neryl Acetate	22.16	0.00	352.89	97.18	352.89	0.40
59		22.56	0.00	6.76	1.77	6.76	0.01
60		22.71	0.00	75.20	16.89	75.20	0.08
61	Geranyl Acetate	22.94	0.00	727.82	175.30	727.82	0.82
62		23.02	0.00	16.95	6.32	16.95	0.02
63		23.15	0.00	89.28	21.59	89.28	0.10
64		23.77	0.00	78.60	22.31	78.60	0.09
65		23.86	0.00	15.60	4.08	15.60	0.02
66		24.11	0.00	22.66	6.36	22.66	0.03
67	Beta Caryophyllene	24.29	0.00	1431.31	327.72	1431.31	1.61
68		24.45	0.00	52.52	14.79	52.52	0.06
69		24.60	0.00	8.70	2.61	8.70	0.01
70		24.78	0.00	97.91	21.61	97.91	0.11
71		24.88	0.00	124.62	32.63	124.62	0.14
72		25.16	0.00	55.31	13.48	55.31	0.06
73		25.52	0.00	44.94	12.08	44.94	0.05
74	Trans Beta Farnesene	25.76	0.00	1012.13	237.81	1012.13	1.14
75		25.89	0.00	23.77	5.21	23.77	0.03
76		26.03	0.00	71.69	20.34	71.69	0.08
77		26.13	0.00	45.33	11.09	45.33	0.05
78	Germacrene D	26.60	0.00	469.75	119.81	469.75	0.53
79		26.72	0.00	28.38	7.35	28.38	0.03
80		27.21	0.00	81.08	13.06	81.08	0.09
81		27.41	0.00	21.37	5.09	21.37	0.02
82		27.64	0.00	190.60	52.90	190.60	0.21
83		27.72	0.00	251.01	68.72	251.01	0.28
84		27.82	0.00	193.21	47.53	193.21	0.22
85		28.19	0.00	135.54	32.79	135.54	0.15
86		28.88	0.00	15.58	3.03	15.58	0.02
87		29.17	0.00	3.36	1.53	3.36	0.00
88	Caryophyllene Oxide	30.27	0.00	111.16	24.03	111.16	0.12

