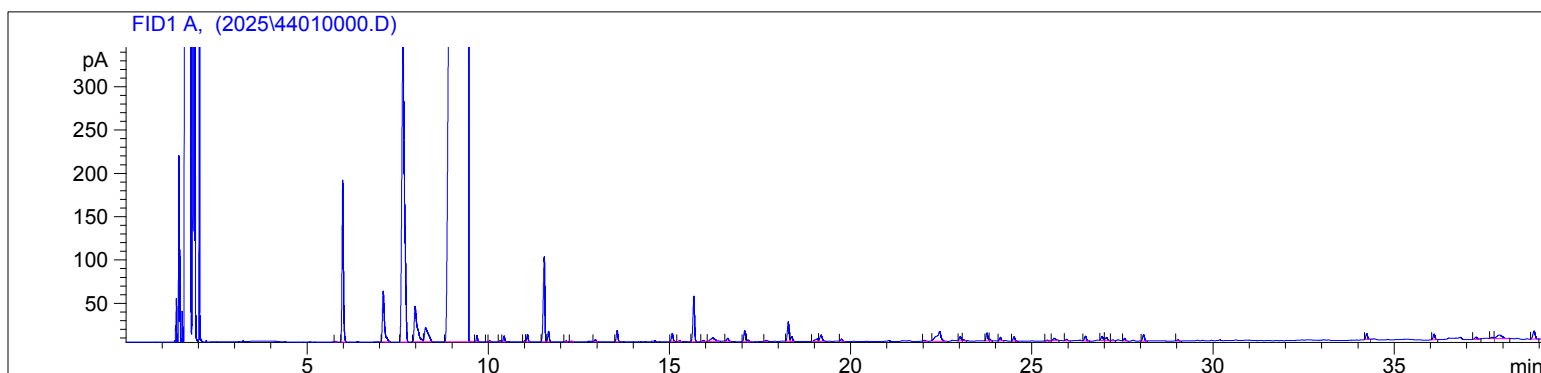


Orange, Sweet Org
4401 KBDB
Mexico
Citrus Sinensis
Sample/Solvent: 0.05g/0.52g
Injection Amount: 0.2uL
20:1 Split Ratio

HP-5 5% Phenyl Methyl Siloxane
30.000m
250.000um
0.250um

11/25/2025 9:56:57 AM
11/25/2025 9:56:57 AM

11/25/2025
10:49:12 AM



#	Compound Name	Meas. Ret.	Amount	Response	Height	Area	Area %
1		5.79	0.00	2.15	0.90	2.15	0.00
2	Alpha Pinene	5.99	0.00	498.17	186.79	498.17	0.56
3	Sabinene	7.11	0.00	226.20	58.38	226.20	0.26
4	Myrcene	7.65	0.00	1784.41	345.54	1784.41	2.02
5	n-Octanal	7.98	0.00	232.04	41.15	232.04	0.26
6	Delta 3-Carene	8.27	0.00	117.42	16.31	117.42	0.13
7	d-Limonene	9.45	0.00	84024.91	4663.97	84024.91	95.21
8		9.68	0.00	17.57	7.51	17.57	0.02
9		9.96	0.00	1.95	0.77	1.95	0.00
10		10.03	0.00	2.88	1.09	2.88	0.00
11		10.33	0.00	4.12	1.56	4.12	0.00
12		10.43	0.00	18.08	6.85	18.08	0.02
13		11.00	0.00	3.73	1.43	3.73	0.00
14		11.08	0.00	23.97	8.60	23.97	0.03
15	Linalool	11.54	0.00	300.15	97.93	300.15	0.34
16	Nonanal	11.66	0.00	32.89	12.32	32.89	0.04
17		12.14	0.00	3.24	1.11	3.24	0.00
18		12.29	0.00	2.96	1.00	2.96	0.00
19		12.95	0.00	7.59	2.66	7.59	0.01
20	Nonen-1-al	13.55	0.00	37.72	12.90	37.72	0.04
21		15.07	0.00	29.30	9.56	29.30	0.03
22		15.27	0.00	2.48	1.01	2.48	0.00
23	Decanal	15.67	0.00	164.72	52.48	164.72	0.19
24		15.93	0.00	4.02	1.41	4.02	0.00
25		16.20	0.00	31.52	4.07	31.52	0.04
26		16.60	0.00	13.90	3.69	13.90	0.02
27		17.07	0.00	40.63	12.67	40.63	0.05
28		17.16	0.00	6.81	2.06	6.81	0.01
29		17.66	0.00	4.66	1.25	4.66	0.01
30		18.27	0.00	72.45	22.73	72.45	0.08
31		18.37	0.00	18.93	5.59	18.93	0.02
32		19.07	0.00	17.98	3.01	17.98	0.02
33		19.18	0.00	33.65	7.34	33.65	0.04
34		19.75	0.00	8.41	2.82	8.41	0.01
35		22.04	0.00	4.79	1.20	4.79	0.01
36		22.46	0.00	98.19	11.31	98.19	0.11
37		23.03	0.00	17.49	5.28	17.49	0.02
38		23.11	0.00	3.69	1.19	3.69	0.00
39		23.77	0.00	29.54	9.09	29.54	0.03
40		23.85	0.00	6.30	2.07	6.30	0.01

4401 KBDB

Instrument 6890

C:\HPCHEM\2\DATA\2025\
44010000.D

Orange, Sweet Org

HP-5 5% Phenyl Methyl Siloxane

4401 KBDB

30.000m

Mexico

250.000um

Citrus Sinensis

0.250um

Sample/Solvent: 0.05g/0.52g

Injection Amount: 0.2uL

20:1 Split Ratio

11/25/2025 9:56:57 AM

11/25/2025

11/25/2025 9:56:57 AM

10:49:12 AM

#	Compound Name	Meas. Ret.	Amount	Response	Height	Area	Area %
41		24.13	0.00	13.48	4.09	13.48	0.02
42		24.51	0.00	18.04	5.27	18.04	0.02
43		25.43	0.00	2.67	1.03	2.67	0.00
44		25.63	0.00	16.41	2.95	16.41	0.02
45		25.97	0.00	5.79	1.61	5.79	0.01
46		26.48	0.00	20.03	5.57	20.03	0.02
47		26.94	0.00	18.54	4.93	18.54	0.02
48		27.06	0.00	16.69	3.60	16.69	0.02
49		27.23	0.00	4.47	1.24	4.47	0.01
50		27.56	0.00	9.84	2.97	9.84	0.01
51		28.09	0.00	26.35	7.33	26.35	0.03
52		29.04	0.00	4.38	1.26	4.38	0.00
53		34.25	0.00	23.22	6.94	23.22	0.03
54		36.11	0.00	23.03	6.63	23.03	0.03
55		37.26	0.00	10.02	2.45	10.02	0.01
56		37.70	0.00	5.95	1.52	5.95	0.01
57		37.91	0.00	41.23	4.13	41.23	0.05
58		38.86	0.00	42.94	9.32	42.94	0.05

