

4511-BBFHH

Instrument 6890

C:\HPCHEM\2\DATA\2020\
45110000.D

Peppermint Organic

HP-5 5% Phenyl Methyl Siloxane

4511-BBFHH

30.000m

India

250.000um

Mentha piperita

0.250um

Sample/Solvent: 0.05g/0.50g

Injection Amount: 0.2uL

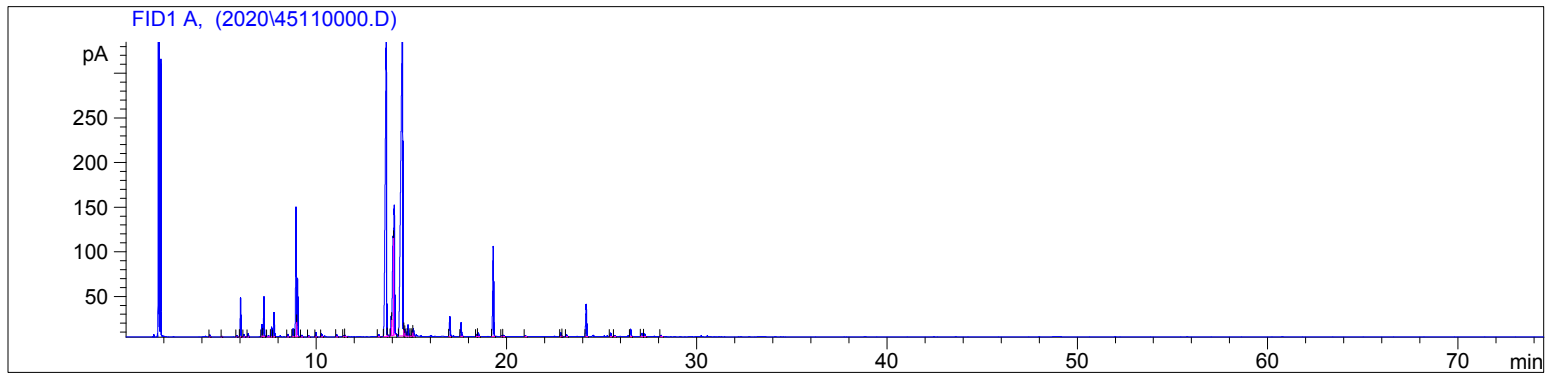
->

2/27/2020 9:45:49 AM

2/27/2020

2/27/2020 9:45:49 AM

12:57:51 PM



#	Compound Name	Meas. Ret.	Amount	Response	Height	Area	Area %
1		4.40	100.00	4.59	2.15	4.59	0.07
2		5.03	100.00	1.44	0.79	1.44	0.02
3	alpha thujene	5.82	100.00	2.95	1.42	2.95	0.04
4	alpha pinene	6.01	100.00	96.11	43.49	96.11	1.39
5		6.19	100.00	7.07	2.82	7.07	0.10
6	camphene	6.41	100.00	9.71	3.57	9.71	0.14
7	sabinene	7.14	100.00	33.76	13.77	33.76	0.49
8	beta pinene	7.24	100.00	110.48	44.54	110.48	1.60
9		7.46	100.00	5.13	1.13	5.13	0.07
10	myrcene	7.65	100.00	26.23	10.89	26.23	0.38
11	octanol	7.78	100.00	69.01	26.92	69.01	1.00
12	delta-3 carene	8.51	100.00	6.97	2.72	6.97	0.10
13	para cymene	8.77	100.00	23.93	8.86	23.93	0.35
14	d-limonene	8.93	100.00	412.18	144.98	412.18	5.96
15	1,8 cineol	9.01	100.00	166.58	64.97	166.58	2.41
16	cis-beta ocimene	9.23	100.00	4.74	1.76	4.74	0.07
17	trans-beta ocimene	9.60	100.00	4.17	1.57	4.17	0.06
18	gamma terpinene	9.99	100.00	14.60	5.06	14.60	0.21
19	cis-sabinene hydrate	10.29	100.00	9.15	3.22	9.15	0.13
20		11.08	100.00	6.67	2.15	6.67	0.10
21		11.45	100.00	3.70	1.13	3.70	0.05
22		11.52	100.00	5.09	1.63	5.09	0.07
23	trans-para-menth-2-en-1-ol	13.29	100.00	9.41	2.38	9.41	0.14
24	menthone	13.69	100.00	1575.07	335.03	1575.07	22.76
25		13.76	100.00	5.75	2.10	5.75	0.08
26		13.95	100.00	65.19	22.16	65.19	0.94
27	isomenthone	14.05	100.00	395.40	111.21	395.40	5.71
28	menthofuran	14.11	100.00	522.38	144.93	522.38	7.55
29	menthol	14.54	100.00	2452.54	384.54	2452.54	35.44

4511-BBFHH

Instrument 6890

C:\HPCHEM\2\DATA\2020\
45110000.D

Peppermint Organic

HP-5 5% Phenyl Methyl Siloxane

4511-BBFHH

30.000m

India

250.000um

Mentha piperita

0.250um

Sample/Solvent: 0.05g/0.50g

Injection Amount: 0.2uL

->

2/27/2020 9:45:49 AM

2/27/2020

2/27/2020 9:45:49 AM

12:57:51 PM

#	Compound Name	Meas. Ret.	Amount	Response	Height	Area	Area %
30		14.62	100.00	19.12	7.23	19.12	0.28
31	terpin-4-ol	14.69	100.00	24.21	7.74	24.21	0.35
32		14.84	100.00	39.79	12.65	39.79	0.57
33		14.96	100.00	2.64	0.71	2.64	0.04
34		15.05	100.00	18.20	6.02	18.20	0.26
35	alpha terpineol	15.12	100.00	24.91	8.02	24.91	0.36
36	pulegone	17.03	100.00	73.30	22.09	73.30	1.06
37	piperitone	17.62	100.00	51.54	15.25	51.54	0.74
38		18.43	100.00	8.65	2.53	8.65	0.13
39	neomenthyl acetate	18.53	100.00	13.65	3.85	13.65	0.20
40	menthyl acetate	19.31	100.00	351.23	100.91	351.23	5.08
41		19.76	100.00	3.95	1.21	3.95	0.06
42	isomenthyl acetate	19.85	100.00	4.88	1.43	4.88	0.07
43		21.00	100.00	3.93	1.22	3.93	0.06
44		22.86	100.00	13.78	4.18	13.78	0.20
45		22.91	100.00	0.93	0.71	0.93	0.01
46		23.17	100.00	6.52	1.89	6.52	0.09
47	beta caryophyllene	24.20	100.00	128.69	36.26	128.69	1.86
48		25.48	100.00	14.51	4.00	14.51	0.21
49		25.68	100.00	4.36	1.29	4.36	0.06
50	germacrene D	26.53	100.00	28.77	8.15	28.77	0.42
51		27.13	100.00	16.94	3.63	16.94	0.24
52		27.27	100.00	10.07	2.76	10.07	0.15
53		28.13	100.00	5.70	1.58	5.70	0.08





40

50

60

70

min