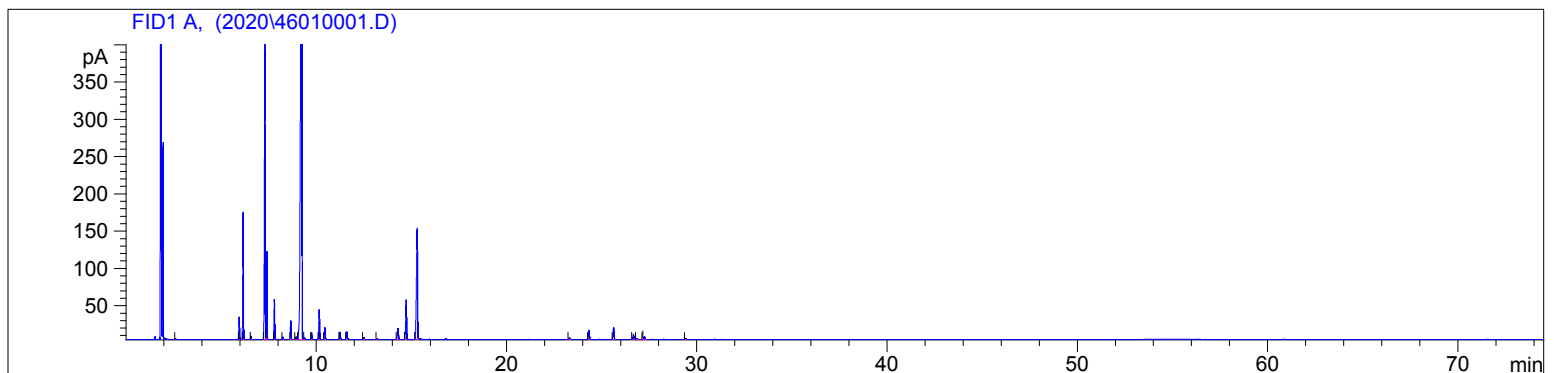


4601-JBIH

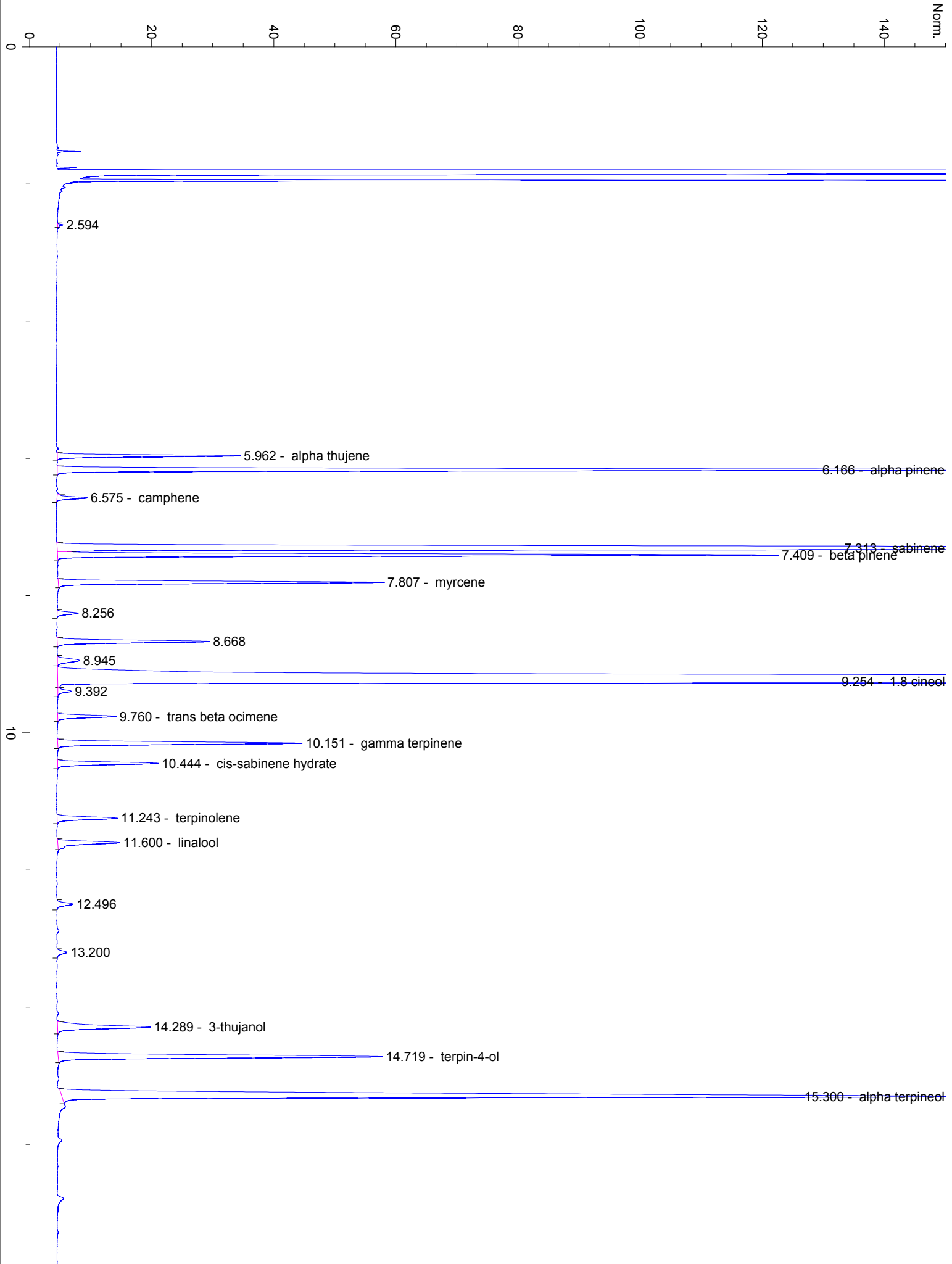
Instrument 6890

C:\HPCHEM\2\DATA\2020\
46010001.DRavintsara Organic
4601-JBIH
Madagascar
Cinnamomum camphoraHP-5 5% Phenyl Methyl Siloxane
30.000m
250.000um
0.250umSample/Solvent: 0.06/0.50g
Injection Amount: 0.2uL
20:1 Split Ratio

->

11/6/2020 4:05:13 PM
11/6/2020 4:05:13 PM11/6/2020
5:41:33 PM

#	Compound Name	Meas. Ret.	Amount	Response	Height	Area	Area %
1		2.59	100.00	1.44	0.88	1.44	0.02
2	alpha thujene	5.96	100.00	65.33	29.99	65.33	0.89
3	alpha pinene	6.17	100.00	386.35	170.55	386.35	5.25
4	camphene	6.58	100.00	12.02	4.98	12.02	0.16
5	sabinene	7.31	100.00	1089.45	400.11	1089.45	14.79
6	beta pinene	7.41	100.00	277.80	118.01	277.80	3.77
7	myrcene	7.81	100.00	130.14	53.33	130.14	1.77
8		8.26	100.00	9.10	3.45	9.10	0.12
9		8.67	100.00	69.42	24.93	69.42	0.94
10		8.94	100.00	13.35	3.61	13.35	0.18
11	1.8 cineol	9.25	100.00	4077.76	882.63	4077.76	55.37
12		9.39	100.00	6.25	2.20	6.25	0.08
13	trans beta ocimene	9.76	100.00	25.55	9.54	25.55	0.35
14	gamma terpinene	10.15	100.00	109.22	40.03	109.22	1.48
15	cis-sabinene hydrate	10.44	100.00	46.40	16.48	46.40	0.63
16	terpinolene	11.24	100.00	28.81	9.86	28.81	0.39
17	linalool	11.60	100.00	32.63	10.15	32.63	0.44
18		12.50	100.00	8.20	2.64	8.20	0.11
19		13.20	100.00	5.19	1.60	5.19	0.07
20	3-thujanol	14.29	100.00	55.24	15.16	55.24	0.75
21	terpin-4-ol	14.72	100.00	171.70	53.08	171.70	2.33
22	alpha terpineol	15.30	100.00	581.78	148.25	581.78	7.90
23		23.30	100.00	7.31	2.13	7.31	0.10
24	beta caryophyllene	24.33	100.00	43.61	12.38	43.61	0.59
25	alpha humulene	25.62	100.00	56.63	16.01	56.63	0.77
26		26.66	100.00	23.64	6.78	23.64	0.32
27		26.85	100.00	4.27	1.24	4.27	0.06
28		27.17	100.00	2.22	1.86	2.22	0.03
29	germacrene D	27.24	100.00	18.58	4.01	18.58	0.25
30		29.42	100.00	4.99	1.40	4.99	0.07



20

30

23.301

24.326 - beta caryophyllene

25.617 - alpha humulene

26.660

26.846

27.239 - germacrene D

27.539
27.578
27.608
27.638
27.668
27.698
27.728
27.758
27.788
27.818
27.848
27.878
27.908
27.938
27.968
27.998
28.028
28.058
28.088
28.118
28.148
28.178
28.208
28.238
28.268
28.298
28.328
28.358
28.388
28.418
28.448
28.478
28.508
28.538
28.568
28.598
28.628
28.658
28.688
28.718
28.748
28.778
28.808
28.838
28.868
28.898
28.928
28.958
28.988
29.018
29.048
29.078
29.108
29.138
29.168
29.198
29.228
29.258
29.288
29.318
29.348
29.378
29.408
29.438
29.468
29.498
29.528
29.558
29.588
29.618
29.648
29.678
29.708
29.738
29.768
29.798
29.828
29.858
29.888
29.918
29.948
29.978
30.008

29.422

40

50

