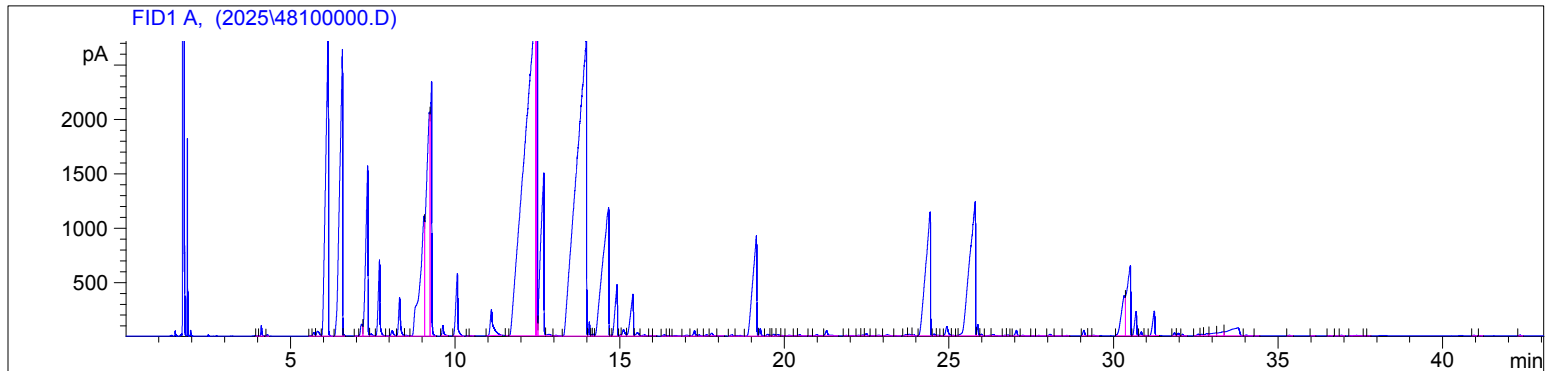


Sage (Bosnian) Org  
4810 DZHD  
Salvia Officinalis  
Croatia  
Sample/Solvent: 0.05g/0.53g  
Injection Amount: 0.2uL  
20:1 Split Ratio

HP-5 5% Phenyl Methyl Siloxane  
30.000m  
250.000um  
0.250um

4/8/2026 10:52:10 AM  
4/8/2026 10:52:10 AM

4/8/2026  
12:00:58 PM



#	Compound Name	Meas. Ret.	Amount	Response	Height	Area	Area %
1		4.01	0.00	13.27	3.49	13.27	0.00
2	Cis-Salvene	4.11	0.00	213.95	97.00	213.95	0.07
3	Trans-Salvene	4.29	0.00	33.92	15.48	33.92	0.01
4		5.61	0.00	24.98	8.00	24.98	0.01
5	Tricyclene	5.70	0.00	130.67	32.92	130.67	0.04
6	Alpha Thujene	5.82	0.00	261.99	44.94	261.99	0.09
7	Alpha Pinene	6.14	0.00	16295.43	2785.93	16295.43	5.35
8	Camphene	6.57	0.00	15986.22	2641.35	15986.22	5.25
9		6.62	0.00	20.83	11.80	20.83	0.01
10	Sabinene	7.04	0.00	10.82	2.24	10.82	0.00
11	Beta Pinene	7.16	0.00	485.74	108.94	485.74	0.16
12		7.34	0.00	7392.42	1560.28	7392.42	2.43
13		7.44	0.00	90.76	18.97	90.76	0.03
14	Myrcene	7.70	0.00	2577.04	697.36	2577.04	0.85
15		7.92	0.00	8.84	2.04	8.84	0.00
16	Alpha Phellandrene	8.08	0.00	226.41	48.86	226.41	0.07
17	Alpha Terpinene	8.31	0.00	1354.80	350.54	1354.80	0.45
18	Para Cymene	8.50	0.00	44.85	8.02	44.85	0.01
19	D- Limonene	9.05	0.00	10883.25	1100.93	10883.25	3.58
20	1.8 Cineol	9.22	0.00	15421.07	2053.29	15421.07	5.07
21	cis-beta Ocimene	9.28	0.00	7055.80	2335.97	7055.80	2.32
22		9.62	0.00	319.84	96.03	319.84	0.11
23	Gamma Terpinene	10.06	0.00	2448.90	571.76	2448.90	0.80
24		10.39	0.00	14.98	5.37	14.98	0.00
25		10.46	0.00	21.41	4.02	21.41	0.01
26	Terpinolene	11.10	0.00	1465.87	238.57	1465.87	0.48
27	Linalool	11.58	0.00	6.20	1.90	6.20	0.00
28	Alpha Thujone	12.41	0.00	71086.98	3219.18	71086.98	23.36
29		12.46	0.00	3423.53	2909.96	3423.53	1.13
30	Bta Thujone	12.47	0.00	6701.21	2934.36	6701.21	2.20
31		12.69	0.00	10107.93	1502.96	10107.93	3.32
32		12.84	0.00	125.71	14.95	125.71	0.04
33		13.06	0.00	46.24	6.67	46.24	0.02
34	Czmpchor	13.98	0.00	57340.16	2720.56	57340.16	18.84
35		14.07	0.00	299.08	128.30	299.08	0.10
36		14.14	0.00	22.44	10.06	22.44	0.01
37		14.20	0.00	47.50	16.04	47.50	0.02
38		14.66	0.00	15273.35	1179.79	15273.35	5.02
39		14.73	0.00	31.54	9.29	31.54	0.01
40		14.91	0.00	2265.06	470.02	2265.06	0.74

Sage (Bosnian) Org  
4810 DZHD  
Salvia Officinalis  
Croatia  
Sample/Solvent: 0.05g/0.53g  
Injection Amount: 0.2uL  
20:1 Split Ratio

HP-5 5% Phenyl Methyl Siloxane  
30.000m  
250.000um  
0.250um

4/8/2026 10:52:10 AM  
4/8/2026 10:52:10 AM

4/8/2026  
12:00:58 PM

#	Compound Name	Meas. Ret.	Amount	Response	Height	Area	Area %
41		15.02	0.00	41.86	15.02	41.86	0.01
42		15.11	0.00	293.93	60.07	293.93	0.10
43		15.40	0.00	2211.45	384.12	2211.45	0.73
44		15.53	0.00	182.03	31.15	182.03	0.06
45		15.74	0.00	68.52	10.30	68.52	0.02
46		15.95	0.00	14.30	4.55	14.30	0.00
47		16.04	0.00	3.73	1.13	3.73	0.00
48		16.34	0.00	52.64	11.89	52.64	0.02
49		16.46	0.00	21.40	6.39	21.40	0.01
50		16.55	0.00	7.15	2.58	7.15	0.00
51		16.66	0.00	50.63	6.12	50.63	0.02
52		17.03	0.00	61.32	8.92	61.32	0.02
53		17.27	0.00	195.14	48.90	195.14	0.06
54		17.41	0.00	44.63	12.49	44.63	0.01
55		17.63	0.00	50.68	11.43	50.68	0.02
56		17.80	0.00	117.92	25.91	117.92	0.04
57		18.02	0.00	5.92	1.61	5.92	0.00
58		18.41	0.00	62.24	11.45	62.24	0.02
59		18.66	0.00	50.86	6.44	50.86	0.02
60		19.15	0.00	7740.53	913.94	7740.53	2.54
61		19.27	0.00	237.03	65.35	237.03	0.08
62		19.50	0.00	79.74	15.63	79.74	0.03
63		19.59	0.00	21.84	6.72	21.84	0.01
64		19.69	0.00	74.62	16.01	74.62	0.02
65		19.81	0.00	73.95	13.93	73.95	0.02
66		19.93	0.00	26.69	5.96	26.69	0.01
67		20.15	0.00	52.61	7.71	52.61	0.02
68		20.35	0.00	24.35	4.68	24.35	0.01
69		20.46	0.00	54.39	11.00	54.39	0.02
70		20.80	0.00	17.60	4.32	17.60	0.01
71		20.99	0.00	92.10	11.37	92.10	0.03
72		21.29	0.00	276.47	48.05	276.47	0.09
73		21.88	0.00	29.04	4.93	29.04	0.01
74		22.06	0.00	35.42	4.48	35.42	0.01
75		22.25	0.00	35.12	7.06	35.12	0.01
76		22.38	0.00	38.19	8.91	38.19	0.01
77		22.49	0.00	99.61	23.08	99.61	0.03
78		22.69	0.00	25.46	4.19	25.46	0.01
79		22.86	0.00	44.75	6.04	44.75	0.01
80		23.13	0.00	89.09	12.09	89.09	0.03
81		23.39	0.00	3.52	1.70	3.52	0.00
82		23.70	0.00	47.06	10.53	47.06	0.02
83		23.79	0.00	88.41	14.35	88.41	0.03
84		23.93	0.00	46.27	9.47	46.27	0.02
85	Beta Caryophyllene	24.43	0.00	11446.02	1128.86	11446.02	3.76
86		24.55	0.00	58.12	17.11	58.12	0.02
87		24.67	0.00	28.05	6.47	28.05	0.01
88		24.77	0.00	10.45	2.99	10.45	0.00
89		24.94	0.00	444.46	84.29	444.46	0.15
90		25.13	0.00	27.12	5.32	27.12	0.01
91		25.25	0.00	17.69	5.07	17.69	0.01
92	Alpha Humulene	25.80	0.00	15347.70	1227.92	15347.70	5.04
93	aromadendrene	25.88	0.00	287.93	102.51	287.93	0.09
94		25.99	0.00	53.25	15.25	53.25	0.02
95		26.25	0.00	31.81	5.55	31.81	0.01

Sage (Bosnian) Org  
4810 DZHD  
Salvia Officinalis  
Croatia  
Sample/Solvent: 0.05g/0.53g  
Injection Amount: 0.2uL  
20:1 Split Ratio

HP-5 5% Phenyl Methyl Siloxane  
30.000m  
250.000um  
0.250um

4/8/2026 10:52:10 AM

4/8/2026

4/8/2026 10:52:10 AM

12:00:58 PM

#	Compound Name	Meas. Ret.	Amount	Response	Height	Area	Area %
96		26.35	0.00	92.87	13.42	92.87	0.03
97		26.70	0.00	26.28	7.31	26.28	0.01
98		26.79	0.00	30.98	8.81	30.98	0.01
99		26.89	0.00	5.68	1.87	5.68	0.00
100		27.05	0.00	213.74	52.93	213.74	0.07
101		27.24	0.00	37.27	6.49	37.27	0.01
102		27.56	0.00	11.42	2.75	11.42	0.00
103		27.73	0.00	36.69	5.66	36.69	0.01
104		28.08	0.00	69.64	14.99	69.64	0.02
105		28.39	0.00	9.87	2.34	9.87	0.00
106		28.58	0.00	27.10	5.52	27.10	0.01
107		29.11	0.00	200.94	50.77	200.94	0.07
108		29.30	0.00	21.42	3.91	21.42	0.01
109		29.40	0.00	25.79	4.71	25.79	0.01
110	Caryophyllene Oxide	30.33	0.00	2878.47	367.54	2878.47	0.95
111	Viridiflorol	30.51	0.00	5074.38	641.20	5074.38	1.67
112		30.69	0.00	941.65	224.66	941.65	0.31
113		30.85	0.00	133.14	36.38	133.14	0.04
114		30.98	0.00	17.41	4.13	17.41	0.01
115		31.24	0.00	1037.26	223.37	1037.26	0.34
116		31.86	0.00	99.33	27.35	99.33	0.03
117		31.97	0.00	84.03	23.06	84.03	0.03
118		32.10	0.00	44.81	13.62	44.81	0.01
119		32.58	0.00	81.51	16.09	81.51	0.03
120		32.68	0.00	77.24	15.46	77.24	0.03
121		32.84	0.00	164.57	22.01	164.57	0.05
122		33.10	0.00	320.74	26.18	320.74	0.11
123		33.32	0.00	421.73	38.20	421.73	0.14
124		33.77	0.00	1646.04	74.82	1646.04	0.54
125		34.03	0.00	37.24	8.51	37.24	0.01
126		34.34	0.00	4.26	1.44	4.26	0.00
127		35.34	0.00	24.97	6.73	24.97	0.01
128		36.05	0.00	8.37	2.01	8.37	0.00
129		36.57	0.00	9.67	2.42	9.67	0.00
130		36.77	0.00	6.09	1.76	6.09	0.00
131		36.93	0.00	26.98	6.81	26.98	0.01
132		37.38	0.00	62.70	4.75	62.70	0.02
133		37.65	0.00	7.64	2.02	7.64	0.00
134		37.74	0.00	9.69	2.85	9.69	0.00
135		40.95	0.00	21.43	6.17	21.43	0.01
136		41.15	0.00	7.47	2.03	7.47	0.00
137		42.35	0.00	30.46	8.19	30.46	0.01

