

Spearment Org

HP-5 5% Phenyl Methyl Siloxane

4890 BAID

30.000m

Mentha Spicata

250.000um

India

0.250um

Sample/Solvent: 0.07g /0.53g

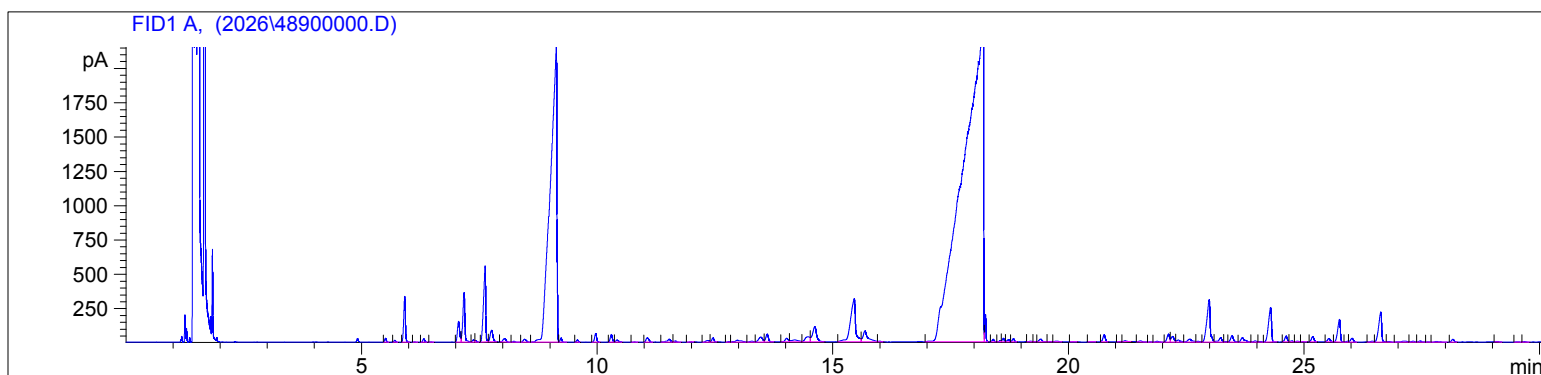
Injection Amount: 0.2uL

4/1/2026 1:19:38 PM

4/1/2026

4/1/2026 1:19:38 PM

2:32:12 PM



#	Compound Name	Meas. Ret.	Amount	Response	Height	Area	Area %
1		5.51	0.00	66.88	28.71	66.88	0.06
2		5.71	0.00	32.14	13.51	32.14	0.03
3	Alpha Pinene	5.92	0.00	826.76	332.45	826.76	0.77
4		6.12	0.00	5.64	1.93	5.64	0.01
5		6.32	0.00	67.00	23.90	67.00	0.06
6		6.48	0.00	7.72	2.80	7.72	0.01
7	Sabinene	7.06	0.00	486.61	150.32	486.61	0.45
8	Beta Pinene	7.18	0.00	1093.20	361.40	1093.20	1.02
9		7.37	0.00	47.92	16.13	47.92	0.04
10		7.42	0.00	35.11	12.18	35.11	0.03
11	Myrcene	7.63	0.00	1801.43	552.22	1801.43	1.67
12		7.76	0.00	345.05	83.63	345.05	0.32
13	Alpha Terpinene	8.04	0.00	109.74	24.24	109.74	0.10
14		8.24	0.00	21.02	6.57	21.02	0.02
15	Para Cymene	8.46	0.00	97.37	21.12	97.37	0.09
16	d-Limonene	9.13	0.00	20507.26	2154.91	20507.26	19.06
17	1.8 Cineol	9.23	0.00	75.34	30.08	75.34	0.07
18		9.58	0.00	42.96	16.58	42.96	0.04
19	Gamma Terpinene	9.97	0.00	191.93	64.37	191.93	0.18
20	Cis-Sabinene Hydrate	10.30	0.00	178.43	56.59	178.43	0.17
21		10.42	0.00	68.13	16.08	68.13	0.06
22		10.79	0.00	8.95	2.38	8.95	0.01
23	Terpinolene	11.06	0.00	129.73	31.55	129.73	0.12
24	Linalool	11.53	0.00	115.08	21.34	115.08	0.11
25		11.65	0.00	34.50	8.36	34.50	0.03
26		11.97	0.00	5.01	2.03	5.01	0.00
27		12.34	0.00	57.18	11.28	57.18	0.05
28		12.45	0.00	93.57	29.83	93.57	0.09
29		12.79	0.00	13.56	4.41	13.56	0.01
30	Menthone	12.97	0.00	130.05	14.74	130.05	0.12
31		13.28	0.00	33.74	5.85	33.74	0.03
32	Dimethoxy-benzene	13.47	0.00	212.48	35.72	212.48	0.20
33	Menthol	13.61	0.00	225.52	57.41	225.52	0.21
34	Terpin 4-ol	14.02	0.00	127.94	25.88	127.94	0.12
35		14.18	0.00	153.87	14.21	153.87	0.14
36		14.47	0.00	258.72	36.76	258.72	0.24
37		14.61	0.00	663.41	108.87	663.41	0.62
38	Cis-Hydro Carvone	15.45	0.00	2344.94	312.82	2344.94	2.18
39	Trans-Carveol	15.68	0.00	576.34	79.51	576.34	0.54
40		15.99	0.00	22.23	5.59	22.23	0.02

4890 BAID

Instrument 6890

C:\HPCHEM\2\DATA\2026\
48900000.D

Spearmint Org

HP-5 5% Phenyl Methyl Siloxane

4890 BAID

30.000m

Mentha Spicata

250.000um

India

0.250um

Sample/Solvent: 0.07g /0.53g

Injection Amount: 0.2uL

4/1/2026 1:19:38 PM

4/1/2026

4/1/2026 1:19:38 PM

2:32:12 PM

#	Compound Name	Meas. Ret.	Amount	Response	Height	Area	Area %
41	Carvone	18.19	0.00	68838.17	2240.35	68838.17	63.97
42	Carvone Oxide	18.24	0.00	326.22	199.66	326.22	0.30
43		18.40	0.00	54.51	18.52	54.51	0.05
44		18.55	0.00	26.81	10.28	26.81	0.02
45		18.62	0.00	74.80	25.20	74.80	0.07
46		18.72	0.00	49.21	15.45	49.21	0.05
47		18.83	0.00	66.56	23.21	66.56	0.06
48		19.19	0.00	16.10	4.36	16.10	0.01
49		19.29	0.00	7.06	2.07	7.06	0.01
50		19.41	0.00	94.35	20.40	94.35	0.09
51		19.62	0.00	15.39	3.74	15.39	0.01
52		19.73	0.00	33.07	6.30	33.07	0.03
53		20.09	0.00	6.60	1.90	6.60	0.01
54		20.47	0.00	9.29	2.00	9.29	0.01
55		20.76	0.00	178.89	52.00	178.89	0.17
56		21.10	0.00	9.56	2.86	9.56	0.01
57		21.20	0.00	34.10	7.64	34.10	0.03
58		21.52	0.00	34.65	6.95	34.65	0.03
59		21.74	0.00	4.37	1.38	4.37	0.00
60		21.88	0.00	27.66	5.72	27.66	0.03
61		22.12	0.00	215.32	57.57	215.32	0.20
62		22.21	0.00	175.91	41.32	175.91	0.16
63		22.33	0.00	77.85	15.05	77.85	0.07
64		22.57	0.00	143.50	21.73	143.50	0.13
65		22.75	0.00	27.92	5.35	27.92	0.03
66	Cis-Carvyl Acetate	22.98	0.00	1519.70	306.68	1519.70	1.41
67		23.23	0.00	144.82	30.95	144.82	0.13
68		23.33	0.00	15.02	4.09	15.02	0.01
69		23.47	0.00	187.32	45.46	187.32	0.17
70		23.69	0.00	173.84	32.59	173.84	0.16
71		23.96	0.00	34.48	7.95	34.48	0.03
72		24.07	0.00	15.88	4.38	15.88	0.01
73	Beta Caryophyllene	24.29	0.00	1113.12	250.66	1113.12	1.03
74		24.62	0.00	157.24	42.55	157.24	0.15
75		24.73	0.00	30.50	7.85	30.50	0.03
76		24.86	0.00	22.85	6.18	22.85	0.02
77		24.98	0.00	13.18	2.94	13.18	0.01
78		25.18	0.00	146.87	38.25	146.87	0.14
79		25.53	0.00	93.60	24.15	93.60	0.09
80	Germacrene D	25.75	0.00	644.05	164.89	644.05	0.60
81		25.92	0.00	19.48	5.21	19.48	0.02
82		26.02	0.00	112.50	27.32	112.50	0.10
83		26.45	0.00	32.15	6.30	32.15	0.03
84		26.63	0.00	961.79	218.13	961.79	0.89
85		26.79	0.00	22.19	4.50	22.19	0.02
86		27.14	0.00	57.17	6.70	57.17	0.05
87		27.31	0.00	32.14	6.50	32.14	0.03
88		27.46	0.00	35.80	8.51	35.80	0.03
89		27.63	0.00	5.64	1.73	5.64	0.01
90		27.81	0.00	28.18	5.28	28.18	0.03
91	Spathelenol	28.16	0.00	77.87	19.82	77.87	0.07
92		29.10	0.00	19.50	3.68	19.50	0.02
93		29.53	0.00	10.70	2.50	10.70	0.01
94		29.68	0.00	13.12	3.14	13.12	0.01

