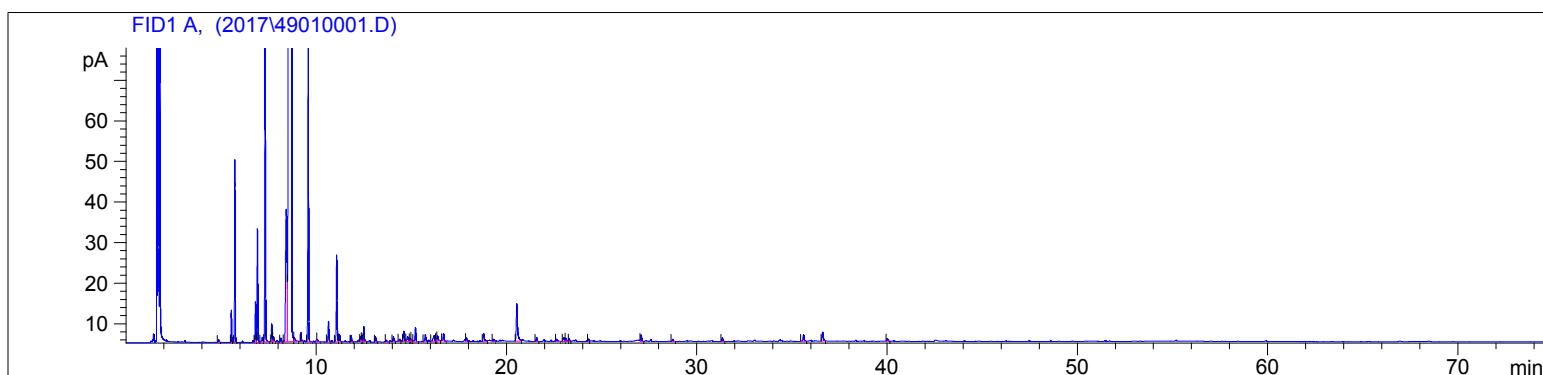


Tangerine (Organic)  
4901-KKZIU  
U.S.A.  
citrus reticulata  
Sample/CH4: 0.05g/0.57g  
Injection: 0.2uL  
15:1 Split Ratio

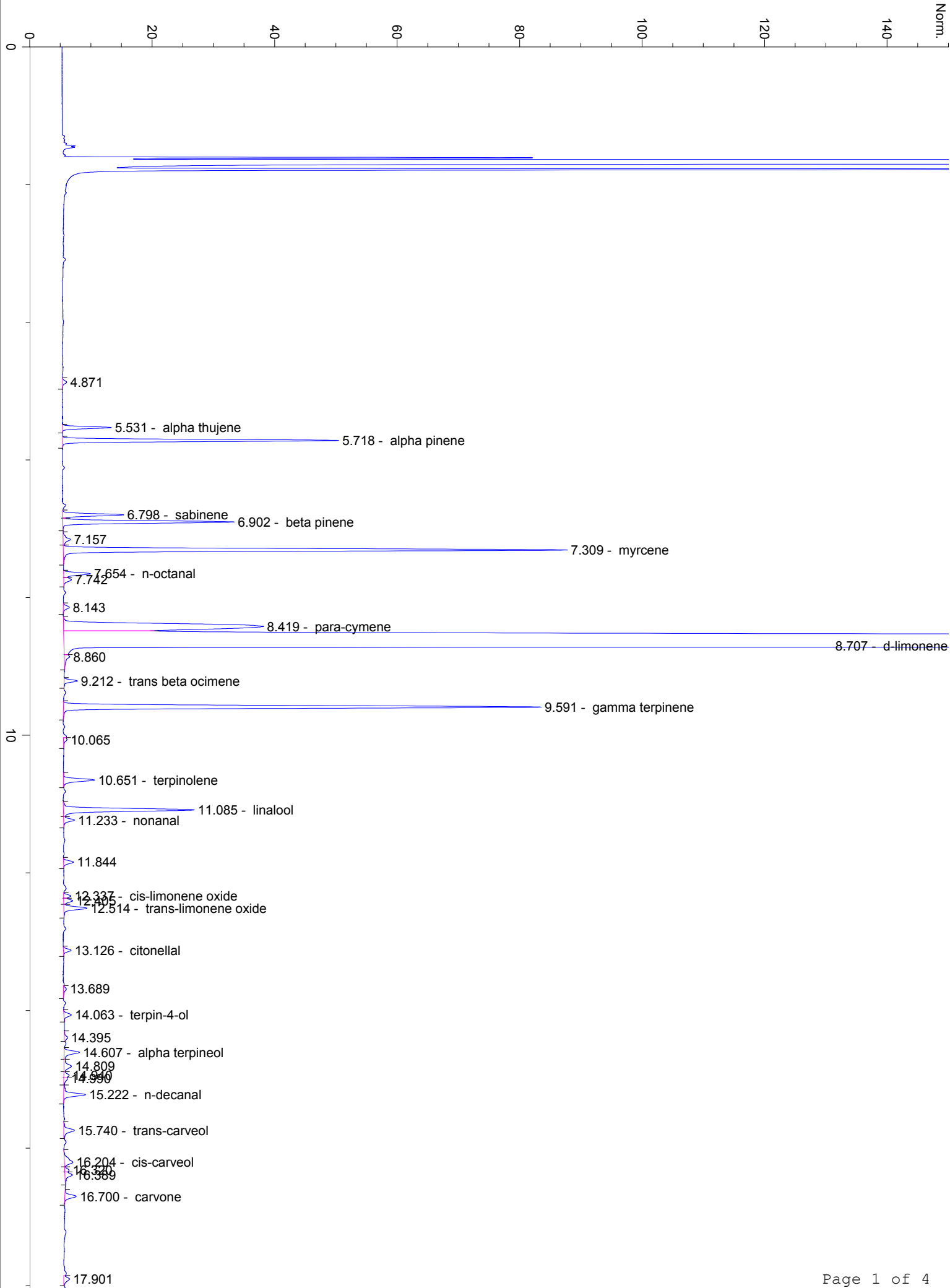
HP-5 5% Phenyl Methyl Siloxane  
30.000m  
250.000um  
0.250um

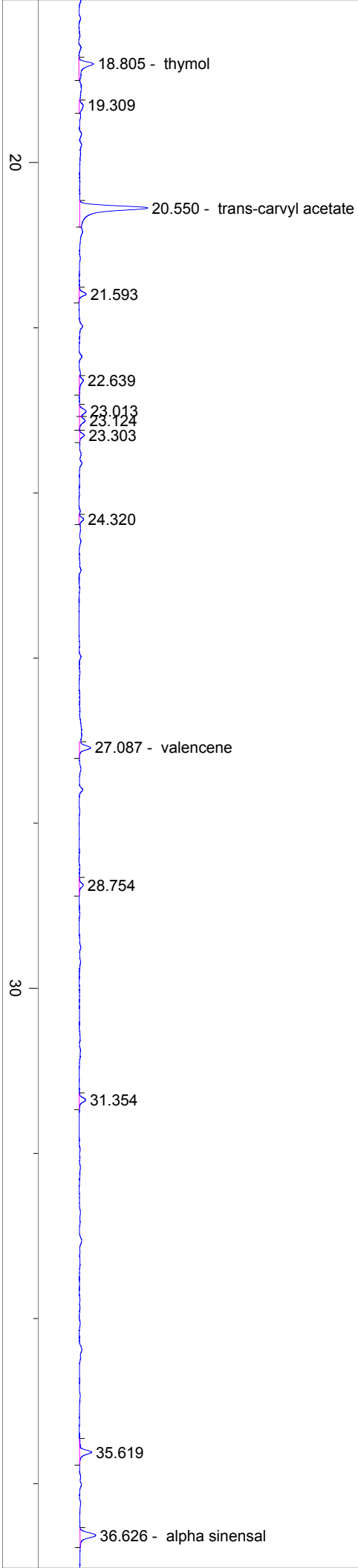
11/9/2017 11:07:19 AM  
11/9/2017 11:07:19 AM

11/9/2017  
2:40:19 PM



#	Compound Name	Meas. Ret.	Amount	Response	Height	Area	Area %
1	alpha thujene	5.53	100.00	16.90	7.97	16.90	0.15
2	alpha pinene	5.72	100.00	99.70	45.05	99.70	0.90
3	sabinene	6.80	100.00	24.26	9.98	24.26	0.22
4	beta pinene	6.90	100.00	70.23	28.01	70.23	0.64
5	myrcene	7.31	100.00	206.82	82.30	206.82	1.87
6	n-octanal	7.65	100.00	12.22	4.38	12.22	0.11
7		7.74	100.00	4.52	1.25	4.52	0.04
8	para-cymene	8.42	100.00	183.18	32.62	183.18	1.66
9	d-limonene	8.71	99.98	9910.42	1511.46	9910.42	89.63
10	trans beta ocimene	9.21	100.00	5.71	2.19	5.71	0.05
11	gamma terpinene	9.59	100.00	207.78	77.99	207.78	1.88
12	terpinolene	10.65	100.00	16.03	5.12	16.03	0.14
13	linalool	11.08	100.00	64.06	21.37	64.06	0.58
14	nonanal	11.23	100.00	5.64	1.76	5.64	0.05
15		11.84	100.00	5.08	1.63	5.08	0.05
16	cis-limonene oxide	12.34	100.00	3.41	1.18	3.41	0.03
17		12.41	100.00	4.68	1.46	4.68	0.04
18	trans-limonene oxide	12.51	100.00	12.18	3.79	12.18	0.11
19	citronellal	13.13	100.00	3.78	1.26	3.78	0.03
20	terpin-4-ol	14.06	100.00	4.28	1.21	4.28	0.04
21	alpha terpineol	14.61	100.00	9.04	2.50	9.04	0.08
22		14.81	100.00	6.08	1.22	6.08	0.05
23	n-decanal	15.22	100.00	12.53	3.58	12.53	0.11
24	trans-carveol	15.74	100.00	7.51	1.74	7.51	0.07
25	cis-carveol	16.20	100.00	7.83	1.40	7.83	0.07
26		16.39	100.00	5.10	1.24	5.10	0.05
27	carvone	16.70	100.00	6.71	1.86	6.71	0.06
28	thymol	18.81	100.00	10.29	1.97	10.29	0.09
29	trans-carvyl acetate	20.55	100.00	44.76	9.22	44.76	0.40
30	valencene	27.09	100.00	6.21	1.53	6.21	0.06
31		35.62	100.00	6.97	1.63	6.97	0.06
32	alpha sinensal	36.63	90.64	10.00	2.14	10.00	0.09





40

40.019

50

