

5161-080515

Instrument 6890

C:\HPCHEM\2\DATA\2017\  
51610002.D

Vitex (Organic)

HP-5 5% Phenyl Methyl Siloxane

5161-080515

30.000m

Bosnia

250.000um

vitex agnus castus

0.250um

Sample/CH2CL2: 0.10g/0.26g

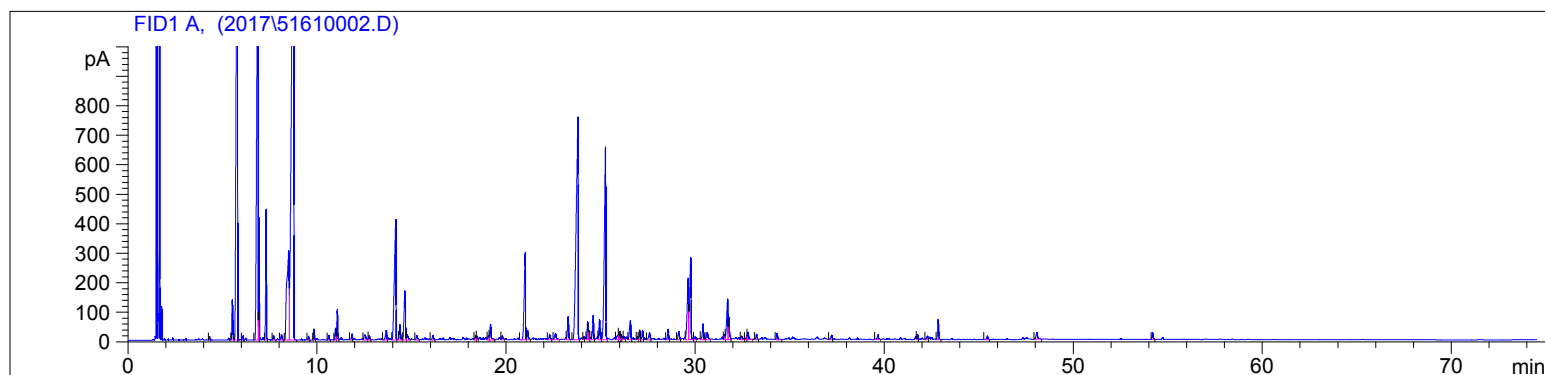
Injection: 0.2uL

2/10/2017 10:20:55 AM

2/10/2017

2/10/2017 10:20:55 AM

11:52:31 AM



#	Compound Name	Meas. Ret.	Amount	Response	Height	Area	Area %
1		4.31	0.00	23.45	12.24	23.45	0.04
2	alpha thujene	5.51	0.00	465.66	136.42	465.66	0.78
3	alpha pinene	5.78	100.00	9437.33	2176.97	9437.33	15.86
4		6.09	0.00	33.89	14.15	33.89	0.06
5	sabinene	6.87	100.00	7841.15	1617.45	7841.15	13.18
6	beta pinene	6.93	100.00	825.65	415.30	825.65	1.39
7	myrcene	7.31	100.00	1159.59	442.76	1159.59	1.95
8	alpha phellandrene	7.69	100.00	52.38	15.35	52.38	0.09
9	para cymene	8.11	100.00	72.69	17.86	72.69	0.12
10	d-limonene	8.49	100.00	2638.56	301.84	2638.56	4.44
11	1.8 cineol	8.76	100.00	13467.72	1643.05	13467.72	22.64
12	trans beta ocimene	0.00	0.00	0.00	0.00	0.00	0.00
13	gamma terpinene	9.54	100.00	34.34	12.77	34.34	0.06
14	cis-linalool oxide	9.84	100.00	101.63	36.60	101.63	0.17
15	alpha terpinolene	10.62	100.00	56.05	15.64	56.05	0.09
16		10.97	0.00	124.73	40.56	124.73	0.21
17	linalool	11.07	100.00	327.30	103.71	327.30	0.55
18		11.85	0.00	73.01	20.03	73.01	0.12
19		12.54	0.00	110.34	17.54	110.34	0.19
20		12.76	0.00	55.71	15.11	55.71	0.09
21	trans-dihydro terpineol	13.65	100.00	156.58	32.59	156.58	0.26
22	terpin-4-ol	14.16	100.00	2362.14	409.33	2362.14	3.97
23		14.38	0.00	193.84	51.30	193.84	0.33
24	alpha terpineol	14.64	100.00	821.10	166.15	821.10	1.38
25		14.77	0.00	91.95	16.65	91.95	0.15
26		15.27	0.00	73.34	15.33	73.34	0.12
27	citronellol	16.12	100.00	71.82	15.19	71.82	0.12
28		18.38	0.00	52.81	14.48	52.81	0.09
29		18.46	0.00	46.95	12.84	46.95	0.08
30		19.06	0.00	56.05	13.61	56.05	0.09
31		19.17	0.00	237.93	52.19	237.93	0.40
32		19.79	0.00	62.58	14.20	62.58	0.11
33	alpha terpinyl acetate	21.00	100.00	1358.44	294.60	1358.44	2.28
34		21.13	0.00	137.33	31.71	137.33	0.23
35		22.29	0.00	85.31	17.46	85.31	0.14
36	beta elemene	22.60	100.00	137.02	20.49	137.02	0.23
37	isoeugenol	23.28	100.00	345.31	78.21	345.31	0.58

5161-080515

Instrument 6890

C:\HPCHEM\2\DATA\2017\  
51610002.D

Vitex (Organic)

HP-5 5% Phenyl Methyl Siloxane

5161-080515

30.000m

Bosnia

250.000um

vitex agnus castus

0.250um

Sample/CH2CL2: 0.10g/0.26g

Injection: 0.2uL

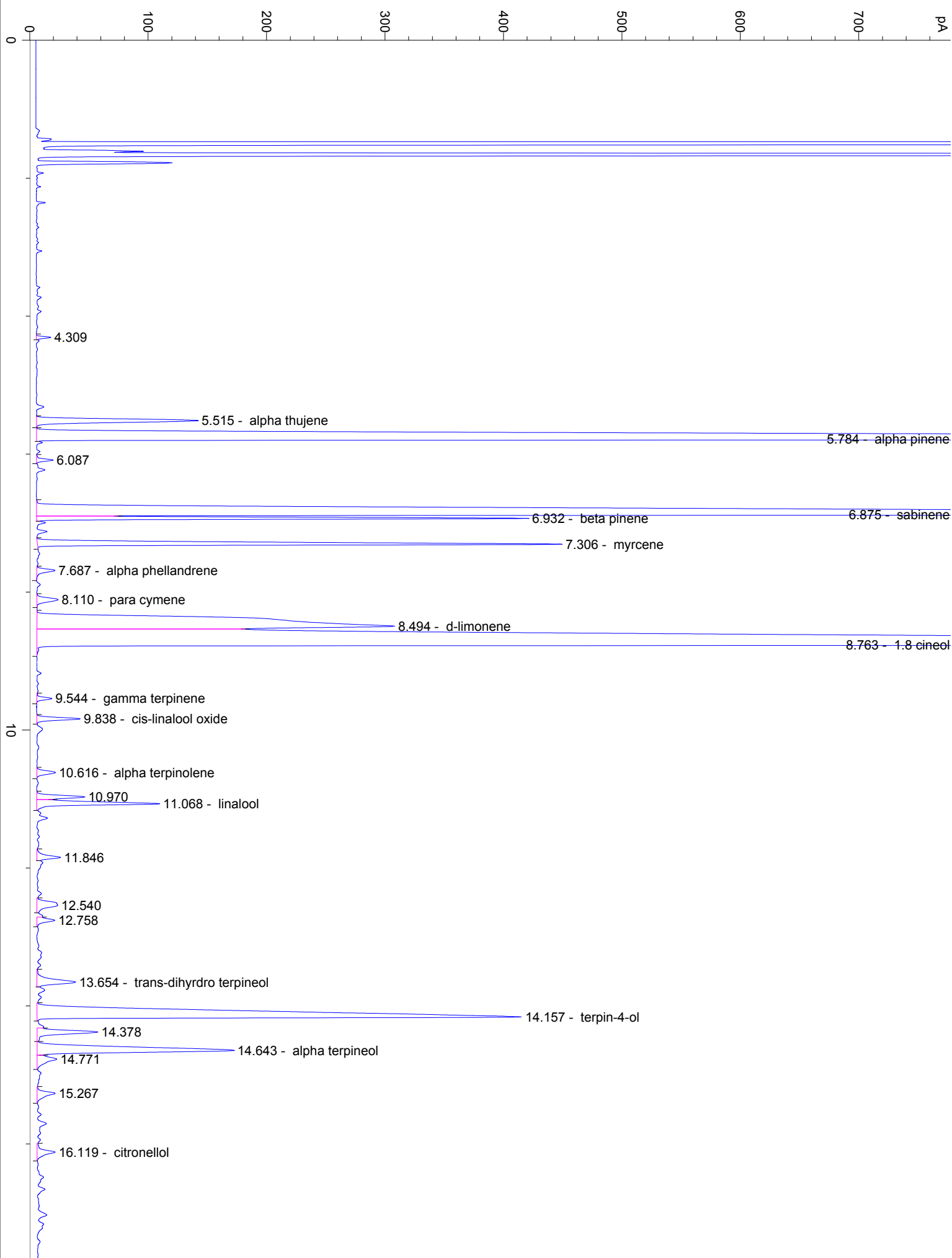
2/10/2017 10:20:55 AM

2/10/2017

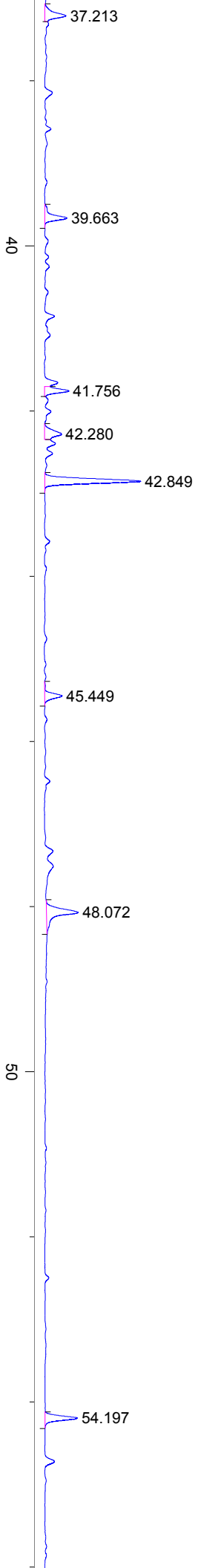
2/10/2017 10:20:55 AM

11:52:31 AM

#	Compound Name	Meas. Ret.	Amount	Response	Height	Area	Area %
38	beta caryophyllene	23.79	100.00	5473.67	753.80	5473.67	9.20
39		24.11	0.00	37.66	10.46	37.66	0.06
40		24.31	0.00	223.88	61.19	223.88	0.38
41		24.37	0.00	100.34	31.98	100.34	0.17
42		24.60	0.00	330.96	82.47	330.96	0.56
43	gamma elemene	24.94	100.00	265.29	68.37	265.29	0.45
44	alpha guaiene	25.25	100.00	3386.08	652.32	3386.08	5.69
45		25.92	0.00	99.83	16.52	99.83	0.17
46	allo-aromadendrene	25.99	100.00	105.56	26.90	105.56	0.18
47		26.09	0.00	65.47	17.26	65.47	0.11
48		26.25	0.00	44.13	11.03	44.13	0.07
49	trans-beta farnisene	26.57	100.00	324.22	63.90	324.22	0.54
50		26.95	0.00	39.96	10.57	39.96	0.07
51		27.06	0.00	112.24	32.16	112.24	0.19
52	beta selinene	27.22	100.00	118.23	30.68	118.23	0.20
53	alpha selinene	27.58	100.00	123.21	23.22	123.21	0.21
54	delta cadinene	28.56	100.00	142.13	34.86	142.13	0.24
55		29.13	0.00	139.32	27.63	139.32	0.23
56	caryophyllene oxide	29.62	100.00	1063.41	207.73	1063.41	1.79
57	spathulenol	29.76	100.00	1447.32	279.46	1447.32	2.43
58		30.00	0.00	45.07	10.63	45.07	0.08
59	trans nerolidol	30.41	100.00	237.88	53.45	237.88	0.40
60		30.63	0.00	150.25	23.54	150.25	0.25
61		31.56	0.00	66.70	17.58	66.70	0.11
62	guaiol	31.71	100.00	657.77	137.82	657.77	1.11
63		31.78	0.00	276.09	75.29	276.09	0.46
64		32.46	0.00	57.23	11.50	57.23	0.10
65		32.72	0.00	42.50	12.57	42.50	0.07
66		32.79	0.00	123.28	25.21	123.28	0.21
67		33.24	0.00	79.71	18.42	79.71	0.13
68		34.33	0.00	96.08	20.91	96.08	0.16
69		37.21	0.00	76.89	14.96	76.89	0.13
70		39.66	0.00	71.33	15.55	71.33	0.12
71		41.76	0.00	64.54	17.23	64.54	0.11
72		42.28	0.00	66.79	11.94	66.79	0.11
73		42.85	0.00	265.88	67.65	265.88	0.45
74		45.45	0.00	55.32	12.27	55.32	0.09
75		48.07	0.00	135.41	22.52	135.41	0.23
76		54.20	0.00	87.10	22.79	87.10	0.15







60

70

min