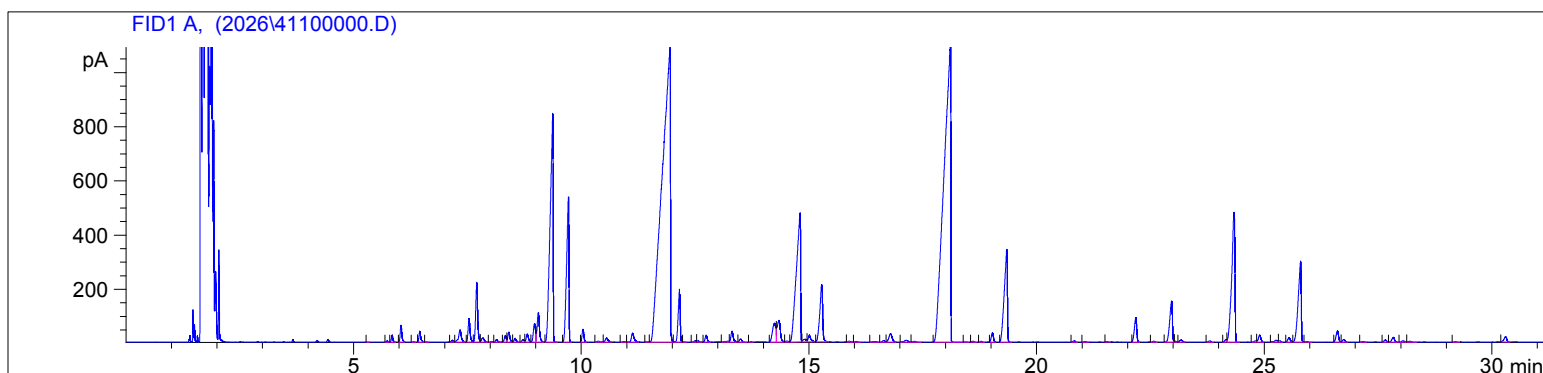


Lavender Extra Org  
4110 LAFB  
Lavandula Angustifolia  
Bulgaria  
Sample/Solvent: 0.05g /0.5g  
Injection Amount: 0.2uL

HP-5 5% Phenyl Methyl Siloxane  
30.000m  
250.000um  
0.250um

4/16/2026 2:00:45 PM  
4/16/2026 2:00:45 PM

4/17/2026  
10:39:51 AM



#	Compound Name	Meas. Ret.	Amount	Response	Height	Area	Area %
1		5.31	0.00	2.18	1.00	2.18	0.00
2		5.73	0.00	13.43	5.35	13.43	0.03
3	Alpha Thujene	5.84	0.00	63.36	26.07	63.36	0.13
4	Alpha Pinene	6.04	0.00	160.00	62.38	160.00	0.34
5		6.31	0.00	6.72	2.25	6.72	0.01
6	Camphene	6.45	0.00	111.95	40.25	111.95	0.24
7		6.60	0.00	4.42	1.60	4.42	0.01
8		7.16	0.00	17.66	6.86	17.66	0.04
9	Sabinene	7.33	0.00	183.65	44.28	183.65	0.39
10	Beta Pinene	7.53	0.00	260.68	87.02	260.68	0.55
11	3-Octanone	7.70	0.00	661.26	220.06	661.26	1.40
12	Myrcene	7.83	0.00	66.07	15.75	66.07	0.14
13		8.02	0.00	8.75	2.57	8.75	0.02
14		8.13	0.00	35.16	9.77	35.16	0.07
15		8.33	0.00	70.77	25.23	70.77	0.15
16	Delta-3-Carene	8.41	0.00	118.56	36.85	118.56	0.25
17		8.54	0.00	45.94	13.92	45.94	0.10
18	Alpha Terpinene	8.72	0.00	30.27	9.83	30.27	0.06
19	Para Cymene	8.81	0.00	101.24	29.17	101.24	0.21
20	d-Limonene	8.97	0.00	236.18	68.22	236.18	0.50
21	1.8Cineol	9.05	0.00	375.50	108.75	375.50	0.79
22	Cis Beta Ocimene	9.37	0.00	3856.77	842.70	3856.77	8.15
23	Trans-Beta Ocimene	9.71	0.00	1926.25	534.51	1926.25	4.07
24	Gamma Terpinene	10.04	0.00	133.76	47.71	133.76	0.28
25		10.37	0.00	17.29	3.88	17.29	0.04
26	Cis Linalool Oxide	10.56	0.00	63.91	14.91	63.91	0.13
27		10.93	0.00	9.94	2.67	9.94	0.02
28	Trans Linalool Oxide	11.13	0.00	136.14	32.67	136.14	0.29
29		11.45	0.00	3.77	1.30	3.77	0.01
30	Linalool	11.95	0.00	13721.61	1088.44	13721.61	28.98
31	1-Octen-3-yl Acetate	12.16	0.00	586.40	194.52	586.40	1.24
32		12.26	0.00	2.75	1.10	2.75	0.01
33		12.50	0.00	17.21	4.90	17.21	0.04
34		12.57	0.00	19.36	5.48	19.36	0.04
35		12.75	0.00	79.94	25.78	79.94	0.17
36		13.22	0.00	22.36	3.58	22.36	0.05
37	Camphor	13.32	0.00	142.58	39.87	142.58	0.30
38	Hexyl Isobutyrate	13.50	0.00	44.18	12.32	44.18	0.09
39		13.73	0.00	6.18	2.08	6.18	0.01
40	Borneol	14.25	0.00	355.62	70.08	355.62	0.75

Lavender Extra Org  
4110 LAFB  
Lavandula Angustifolia  
Bulgaria  
Sample/Solvent: 0.05g /0.5g  
Injection Amount: 0.2uL

HP-5 5% Phenyl Methyl Siloxane  
30.000m  
250.000um  
0.250um

4/16/2026 2:00:45 PM  
4/16/2026 2:00:45 PM

4/17/2026  
10:39:51 AM

#	Compound Name	Meas. Ret.	Amount	Response	Height	Area	Area %
41	Lavandulol	14.35	0.00	398.96	79.88	398.96	0.84
42		14.52	0.00	14.92	3.62	14.92	0.03
43	Terpinen 4-ol	14.81	0.00	3096.98	476.78	3096.98	6.54
44		14.92	0.00	50.82	9.67	50.82	0.11
45		15.01	0.00	104.15	25.28	104.15	0.22
46	Alpha Terpineol	15.28	0.00	933.86	211.19	933.86	1.97
47	Hexyl Butyrate	15.88	0.00	14.14	3.16	14.14	0.03
48		16.04	0.00	9.18	2.28	9.18	0.02
49		16.42	0.00	14.72	2.17	14.72	0.03
50		16.64	0.00	20.02	5.51	20.02	0.04
51	Nerol	16.80	0.00	155.76	30.53	155.76	0.33
52		17.14	0.00	42.38	6.68	42.38	0.09
53		17.32	0.00	14.17	2.88	14.17	0.03
54	Linalyl Acetate	18.11	0.00	11507.98	1093.46	11507.98	24.31
55		18.44	0.00	4.65	1.40	4.65	0.01
56		18.61	0.00	12.38	3.29	12.38	0.03
57		18.79	0.00	8.76	2.84	8.76	0.02
58	Bornyl Acetate	19.03	0.00	110.88	33.89	110.88	0.23
59	Lavandulyl Acetate	19.35	0.00	1628.91	341.47	1628.91	3.44
60		20.83	0.00	19.32	5.25	19.32	0.04
61		21.07	0.00	10.75	2.98	10.75	0.02
62		21.54	0.00	5.41	2.17	5.41	0.01
63	Neryl acetate	22.18	0.00	330.39	90.92	330.39	0.70
64		22.57	0.00	13.81	3.88	13.81	0.03
65	Geranyl Acetate	22.97	0.00	618.47	151.34	618.47	1.31
66		23.05	0.00	8.97	3.28	8.97	0.02
67		23.17	0.00	35.89	8.48	35.89	0.08
68		23.80	0.00	17.52	4.39	17.52	0.04
69		24.16	0.00	26.45	9.13	26.45	0.06
70	Beta Caryophyllene	24.34	0.00	2345.54	477.99	2345.54	4.95
71		24.81	0.00	16.90	4.33	16.90	0.04
72	Trans Alpha Bergamotene	24.90	0.00	99.75	26.39	99.75	0.21
73		25.26	0.00	37.67	7.16	37.67	0.08
74		25.34	0.00	16.76	4.62	16.76	0.04
75		25.55	0.00	60.05	16.21	60.05	0.13
76	Alpha Humulene	25.80	0.00	1375.73	297.59	1375.73	2.91
77	Trans Beta Farnesene	25.94	0.00	10.32	2.32	10.32	0.02
78	Germacrene D	26.61	0.00	157.81	41.45	157.81	0.33
79		26.75	0.00	35.38	9.75	35.38	0.07
80		27.17	0.00	11.15	2.89	11.15	0.02
81		27.66	0.00	27.49	7.88	27.49	0.06
82		27.84	0.00	71.75	18.04	71.75	0.15
83		28.05	0.00	20.15	4.88	20.15	0.04
84		28.20	0.00	13.27	3.01	13.27	0.03
85		29.20	0.00	5.75	1.66	5.75	0.01
86		30.30	0.00	84.73	19.51	84.73	0.18

